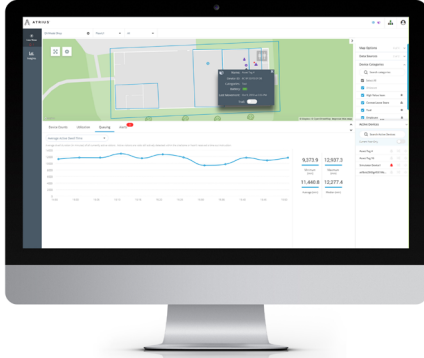


## Atrius™ Assets



### WHAT IS ATRIOUS ASSETS?

Atrius Assets is a real-time indoor asset tracking solution that leverages the Atrius™-Ready Sensory Network and Bluetooth® Low Energy technology communication to reveal greater understanding of location, movement and space utilization. Atrius Assets is a cloud-based software service, which delivers data and insight through callable APIs and Atrius LiveView, real-time web visualization interface. Gain understanding of your assets' real-time location and movement to improve processes, services, customer experience, theft prevention, equipment utilization and more.

### FEATURES

- Two meter or better accuracy across 90% of floor space equipped with Atrius-Ready luminaires<sup>1</sup>
- Real-time asset positioning
- Tracking of movement through spaces, in real-time
- Analysis of asset movement, utilization and positioning
- Alerting and notifications generated from user defined parameters
- Maintenance Free Infrastructure
- Rugged (IP-67 rated) Bluetooth Low Energy technology asset tags
- Long battery life asset tags<sup>2</sup>
- Configurable asset tag parameters to match your movement needs (ex: beaconing frequency)
- Categorize assets to differentiate in real-time visualization and data analysis
- Atrius Cloud access for data aggregation, processing and storage
- RESTful APIs for integration into organically developed or 3rd party software and visualization tools
- Supports many of the most popular internet browsers: Google Chrome™, Microsoft Edge™, Safari™
- Backhaul data through building infrastructure, minimizing maintenance costs
- Seamless integration with Atrius Navigator, indoor positioning software service, and Atrius Insights, spatial analytics dashboard

### WHAT DO I NEED?

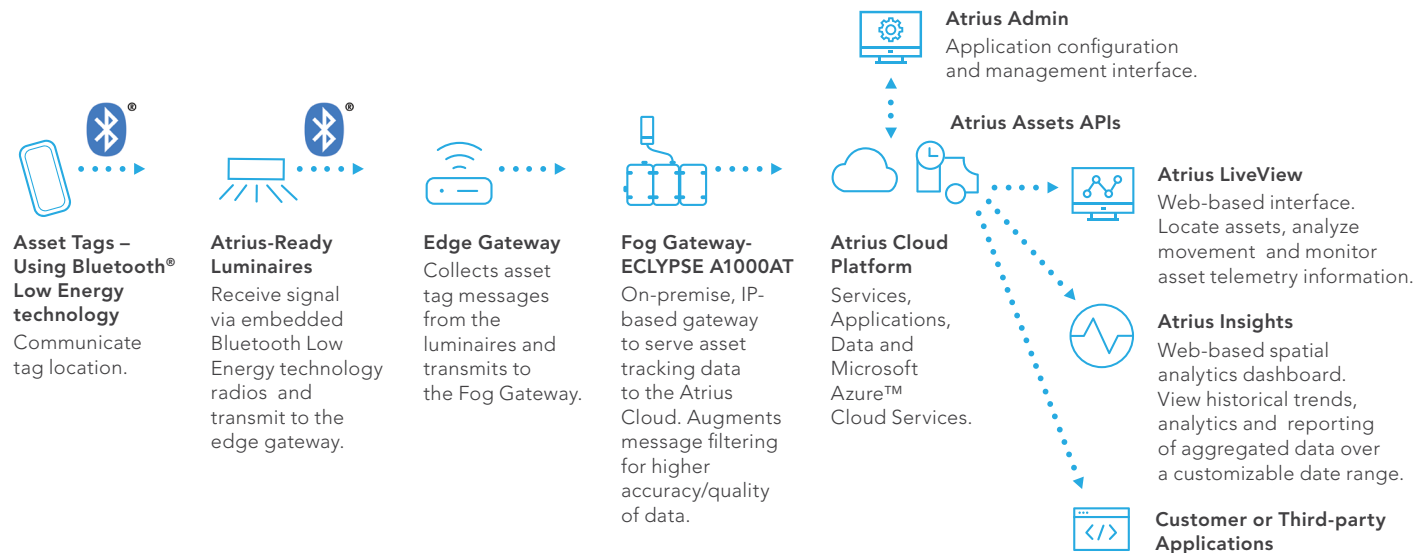
- Commissioned Atrius™-Ready lighting infrastructure
- Georeferenced floor space map
- Atrius Admin<sup>3</sup>
- Atrius LiveView<sup>3</sup>
- ECLYPSE™ A1000 Controller
- ECLYPSE A1000AT Fog Gateway
- Atrius Assets Edge Gateways<sup>4</sup>
- Asset Tags - Bluetooth Low Energy technology with Atrius Assets firmware
- Microsoft™ Azure™ Active Directory<sup>5</sup>

## HOW DOES IT WORK?

Atrius Asset is a cloud-based software service that enables the tracking of assets by leveraging the Atrius-Ready Sensory Network and Bluetooth Low Energy technology communication. Bluetooth Low Energy technology asset tags are enabled with proprietary protocols to communicate with the Atrius-Ready fixtures in your space to transmit their location. The Atrius-Ready fixtures communicate with Edge Gateways, which aggregate the location messages, perform preliminary logic and communicate with the ECLYPSE™ Fog Gateway. Once the location messages reach the Fog Gateway these asset tag positions are transmitted to the cloud for storage and processing.

The product of Atrius Assets data backhaul and logic can be viewed in real-time through Atrius LiveView or called through RESTful APIs to integrate into other software solutions or visualization tools. Atrius Assets also integrates with Atrius Insights for further data aggregation and analysis.

Customers also receive access to Atrius Admin web portal – a web application administration tool – that is used for managing settings such as managing multiple sites, multiple users, creating and managing metric zones, managing tagged assets and devices, creating alerts and notifications, and updating maps as they change over time.



## HOW DO I DEPLOY??

The following steps are a general guideline for enabling precise location capability indoors. Contact Atrius Sales representative for any specific questions.

- Confirm that the lighting equipment and Bluetooth Low Energy technology beacon density is sufficient to address your accuracy requirements.<sup>1</sup>
- Specify a luminaire from Acuity Brands with appropriate Bluetooth Low Energy technology options, or integrate eldoLED components into other luminaires to form an Atrius-Ready Sensory Network.
- Identify Edge Gateway layout configuration for your spaces and luminaire densities. Each Atrius-Ready luminaire should be within 20 meters of an Edge Gateway<sup>6</sup>.
- Specify an internet connected ECLYPSE A1000 for each space of up to 2000 Bluetooth Low Energy technology radios. Specify an ECLYPSE A1000AT for each space of up to 16 Edge Gateways.<sup>6</sup>
- Install your Atrius Assets hardware, Atrius-Ready Sensory Network and energy-efficient LED lighting solution.
- Commission your Atrius-Ready Sensory Network with Atrius Commissioning Tools or Services from Acuity Brands.
- Commission your Atrius Assets system with Atrius Admin or Services from Acuity Brands
- Set up Cloud instance for initialization of map service and authentication of device.
- Configure and categorize your asset tags for your site through Atrius Admin to complete setup of Atrius Assets.
- Begin using Atrius LiveView and/or our RESTful APIs to provide data and tracking of your assets.

\*Visual® Lighting 2017 is a suite of lighting calculation tools and 3D modeling software, engineered to simplify the design process and provide comprehensive analysis of lighting projects. Visual Lighting 2017 recognizes VLC-enabled fixtures and provides VLC coverage calculations for the evaluation of system performance in interior spaces.

### Notes:

1. Accuracy depends on many factors including but exclusive to: Atrius-Ready luminaire density, height and the dimensions of your space.
2. Battery life is dependent on many factors, including tag beaconing frequency. At 3 second frequency, approximate battery life is 2-3 years.
3. Provided with Atrius Assets license subscription.
4. Number and configuration of Edge Gateways is dependent on desired coverage area.
5. Users of Microsoft Office 365 will automatically have Microsoft Azure Active Directory.
6. To verify your sites Edge Gateway and ECLYPSE A1000AT configuration and requirements, please contact your Atrius Sales representative.

## ORDERING INFORMATION

EXAMPLE: ASSETS ASTSLN LEVEL 2 12M

Series	Platform Service	Asset Tag Support <sup>1</sup>	Service Period
ASSETS Indoor Asset Tracking Service	ASTSLN Asset Tracking Software Service LiveView web-app and API Access	LEVEL 1 Peak Capacity of 50 asset tags (Supports approx. 150 asset tags)	12M 1 year
		LEVEL 2 Peak Capacity of 125 asset tags (Supports approx. 400 asset tags)	24M 2 year
		LEVEL 3 Peak Capacity of 250 asset tags (Supports approx. 650 asset tags)	36M 3 year
		PILOT Peak Capacity of 20 asset tags	3M 3 months

Notes:

<sup>1</sup> Asset tag quantities are on a per site basis.

Atrius, Atrius-Ready and ECLYPSE are trademarks of Acuity Brands Lighting Inc. Bluetooth is a registered trademark of Bluetooth SIG, Inc. Microsoft, Azure and Microsoft Edge are trademarks of Microsoft Corporation. iOS is a trademark or registered trademark of Cisco, Apple and Safari are trademarks of Apple Inc., Android and Google Chrome are trademarks of Google Inc. All other trademarks or service marks are property of their respective owners.