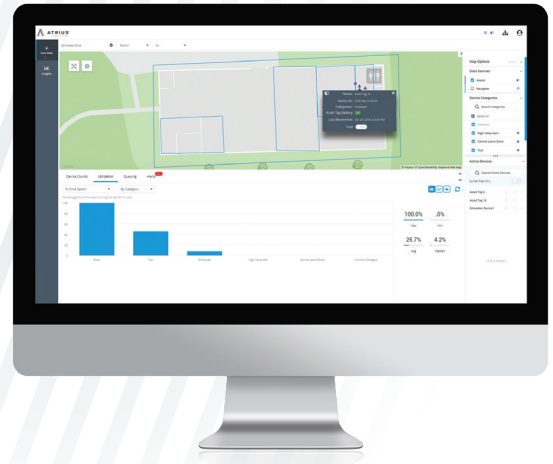




FAQ

ATRIUS™ ASSETS



Q: What is Atrius Assets?

Atrius Assets is an asset tracking software service that leverages Bluetooth® Low Energy technology and the Atrius™-Ready Sensory Network to provide accurate location information and back-haul of telemetry data. This enables the tracking, monitoring and analysis of location and movement of equipment, people and resources.

Q: What is included when I purchase Atrius Assets?

When you purchase Atrius Assets you will receive the ability to backhaul data using the Atrius™-Ready Sensory Network, Atrius Assets infrastructure and Atrius Cloud, licensed access to Atrius Assets APIs, Atrius LiveView to visualize and analyze your data over the last 60 minutes, and Atrius Admin to manage your users, devices and sites.

Q: What is required for Atrius Assets to operate?

- Sensory Network – Assets commissioned, Atrius-Ready luminaires
- ECLYPSE™ A1000
- Fog Gateway (ECLYPSE A1000AT with 900MHz USB adaptor)
- Edge Gateways
- Bluetooth Low Energy technology asset tags

Q: What Luminaires work with Atrius Assets?

Atrius™-Ready luminaires, featuring embedded Bluetooth Low Energy technology, work with Atrius Assets. Acuity Brands Lighting (ABL) teams continue to release additional Atrius-Ready luminaires, further contributing to the Sensory Network. This is a continuous and ongoing effort with new product releases every month. For the most up-to-date Atrius-Ready Sensory Network, visit www.acuitybrands.com/atrius

Q: How do I know if a luminaire is "Atrius-Ready"?

This is specified in the nomenclature and noted as "AE" in the luminaire spec sheet. The spec sheet will also feature an "Atrius-Ready" ingredient logo.

Q: Can I use Atrius Assets without a network of Atrius-Ready luminaires?

No, the Sensory Network using Atrius-Ready luminaires is required for the operation of Atrius Assets.



Q: What impact on power consumption does an Atrius-Ready luminaire have, compared to one that is not Atrius-Ready?

AE1Cx and AE1Bx fixtures have an additional standby power consumption of 150mW (approximately 0.5% power of a 30W fixture) to power the Bluetooth low energy radio. There is an additional impact of less than 2% fixture efficiency when VLC is enabled.

Character Placement	Character Description	Character Options	Significance
First and Second	Prefix	AE – Atrius Enabled	All Atrius-Ready luminaires will start with these two letters.
Third	Platform	2 – Gen 2 Radio (BT) 3 – nLight AIR	Platform indicates the manufactured hardware platform.
Fourth	Positioning Capability	C – VLC & Bluetooth Low Energy B – Bluetooth Low Energy only	Positioning capability determines the positioning technologies used for Atrius Navigator.
Fifth	Driver Communication	D – Digital A – Analog N – No communication	Driver communication describes how the BLE board communicates with the driver. D = LEDcode A = 0-10V dimming

Q: If a lighting fixture must be replaced in a functioning indoor positioning facility, how do I ensure that the new fixture is also commissioned properly?

Customers who have already deployed Atrius Assets receive a Maintenance App. This app allows them to recommission a new fixture by simply standing under it and following a two-step process.

Q: How do I know if a luminaire features embedded Bluetooth Low Energy technology, VLC or both technologies?

An Atrius-Ready fixture incorporates our location services capabilities for Atrius Navigator and Atrius Assets. They are designated with a five-character code that indicates its platform, positioning capabilities, and driver communication.

Q: Is there any commissioning process required for Atrius Assets capabilities to be utilized?

Yes, Acuity’s field services team is equipped with the necessary tools to commission the lighting fixtures, Atrius Assets hardware and asset tags in your space.

Q: Can I pick up a third-party asset tag and start tracking it through Atrius Assets?

No. To work with Atrius Assets, an asset tag must have Atrius Assets proprietary firmware to communicate with our network. We are working with several vendors and can work together to find a feature and form factor to fit your needs.

Asset tags must also be provisioned in the system to operate on a certain site. This can be done in Atrius Admin, so you can manage tags as required once your system is operational.



Q: How many Edge Gateways are needed for my site?

The number of Edge Gateways required varies based on site layout and luminaire configuration. A rule of thumb to estimate is that each Atrius-Ready luminaire should be within 20 meters of an Edge Gateway.

Q: What is the purpose of the Fog Gateway? The Edge Gateway?

The Edge Gateway aggregates position messages from the luminaires' Bluetooth Low Energy technology radios, performs initial logic, and transmits messages to the network's Fog Gateway. The Fog Gateway provides connectivity to the Atrius Cloud, performs on premise logic to optimize the system and manages the other Atrius Assets hardware components.

Q: Does Atrius Assets require a data connection?

Yes, Atrius Assets requires internet connectivity to communicate with the Atrius Cloud to backhaul asset position and telemetry information, as well as to access site maps and other critical information.

Q: Can Atrius Assets work with other Atrius products ?

Yes. Atrius Assets and Atrius Navigator can be visualized at the same time in Atrius LiveView, and both integrate into Atrius Insights. Combining multiple Atrius products is the best way to leverage Atrius' platform capabilities and gain a holistic view of your location-aware, contextual data.

Q: How is the firmware of Atrius Assets Edge Gateway maintained and updated?

Throughout the product lifecycle the ECLYPSE A1000AT acts as the gateway that provides over-the-air (OTA) updates to the Edge Gateways.

Q: How is the Bluetooth Low Energy firmware in the luminaires maintained for the sensory network over the life of the fixture?

The ECLYPSE A1000 acts as the gateway that provides OTA Bluetooth Low Energy technology firmware upgrades to the light fixtures.

Q: How is Atrius Assets information sent to the Cloud?

Position information is sent to the Cloud in packets that are aggregated at different points in the network (Edge and Fog Gateways). Aggregating position messages minimizes data transfer between the Fog Controller and the Atrius Cloud, while having minimal impact on system latency.

Q: How does the Fog Gateway communicate with the cloud?

All communication from the Fog Gateway to the Atrius Cloud is sent securely using TLS/SSL.

Q: How long is the Asset Tag's battery life?

Asset tag battery life is affected by several factors the most impactful of which is beaconing frequency. Our standard asset tag, equipped with an accelerometer to detect motion, beaconing every 3 seconds will last up to 2 years dependent on operation and environmental factors. As the beaconing frequency is decreased the battery life will increase and vice versa.



Q: How should I mount Asset Tags?

Best practices for tag mounting:

- The asset tags should be mounted with the wider side (back) of the tag flush against the surface.
- The front of the tag should face in a direction where there will be minimal interference (ex. External to a basket)
- Asset tag should be mounted away from any metal objects or enclosures, if possible. If not possible, tag should be mounted to maximize distance from metal items.
- Horizontal mounting of asset tags (parallel to the floor) typically produce the best results.

For further information on asset tag mounting please contact your Atrius sales representative.

Q: Is the firmware on the Asset Tags compatible with any of the Bluetooth Low Energy standards?

Yes, iBeacon.

Q: Does Acuity collect any personal information based on location?

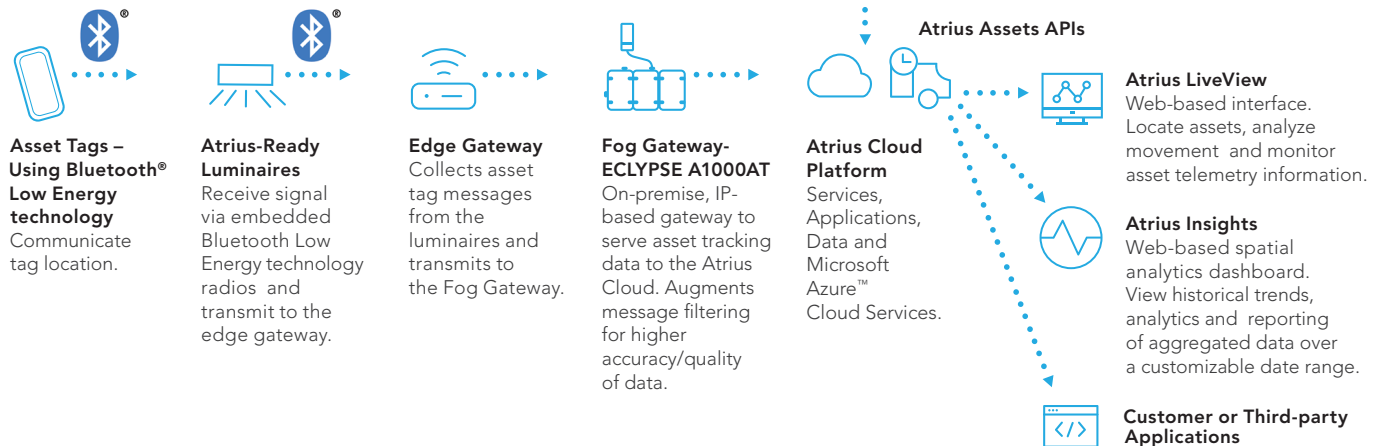
Acuity does not collect any PII (personally identifiable information) from Atrius Assets. However, attributes of assets and devices can be configured using descriptive information. If you have questions we recommend contacting your legal department.

Q: My floor layout has changed. How do I update the map in Atrius and my app to reflect these changes?

Atrius Admin can be used to update floor maps. Simply upload the latest map file for the appropriate space in this tool, and the new floor map will be reflected in the app using the Atrius Navigator SDK and Atrius user interfaces.

HOW IT WORKS

Atrius Assets



*Atrius, Atrius-Ready, ECLYPSE are trademarks of Acuity Brands Lighting Inc. Bluetooth is a registered trademark of Bluetooth SIG, Inc. Microsoft and Azure are trademarks of Microsoft Corporation