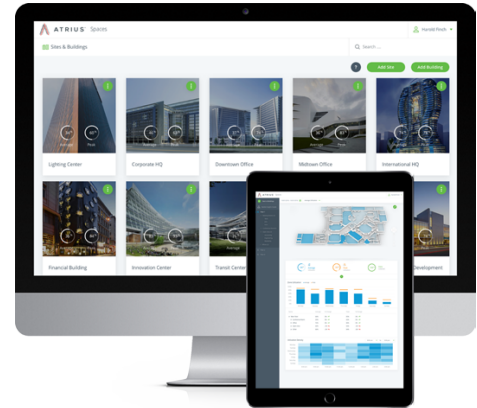




ATRIUS SPACES

FREQUENTLY ASKED QUESTIONS



What is Atrius?

Atrius™ is Acuity Brands' new brand for all IoT and Software Services.

Acuity Brands is one of the world's leading providers of lighting and building management solutions. And we recognize that as businesses convert to LED, there is a remarkable opportunity to leverage lighting as a platform. Luminaires enabled with Atrius become digital devices, allowing them to be:

- at the right location for collecting data because lighting is everywhere, enabling a dense sensory network;
- with the right connection providing constant power; and
- at the right time because we have a built-in funding mechanism for IoT infrastructures.

What is Atrius Spaces?

Atrius Spaces is a platform service and web application which transform occupancy data readily available from your building, into accurate insights into your space utilization. Leveraging nLight occupancy sensors, building owners and facility management can use real data to understand underutilized areas, peak usage times, real-time room status, and access full historical metrics. Floorplan graphics help you instantly understand the historical traffic patterns of your open spaces, meeting rooms, and offices, along with advanced charts and graphs for further analysis. Users can also use the application to monitor system health of nLight ECLYPSE controllers and occupancy sensors. Most importantly, Atrius Spaces can aggregate nLight ECLYPSE controllers together, and manage multiple sites, buildings, and floors within a single cloud dashboard.

What is Atrius Spaces designed to achieve?

Atrius Spaces is designed to provide an intuitive interface to understand your building's space utilization performance. The dashboard can provide answers to questions such as, "which meeting rooms are being used most? How full does my building get at peak usage times? Which offices are least used?"

How does Atrius Spaces work?

Atrius Spaces uses occupancy data gathered directly from the same motion sensors that are used in our nLight controls systems. Every time a sensor is triggered, the data is sent back to the nLight ECLYPSE where it is stored and saved. The nLight ECLYPSE then pushes this data to the cloud, where it is stored with data from every other nLight ECLYPSE in your building or buildings around the world. By creating an account with Atrius Spaces, you are now able to access this data from the web to make space planning and renovation decisions.

If the nLight ECLYPSE pushes its data to the cloud, does the nLight ECLYPSE need an internet connection?

Yes, in order for the nLight ECLYPSE to function properly for Atrius Spaces it must have a connection to the internet. Instructions for this process are provided in the nLight ECLYPSE documentation.

What do I need for Atrius Spaces?

The required components for Atrius Spaces are the following:

- Sensorview 13
- Networked nLight system
- nLight occupancy sensors (with latest device firmware)

FAQ continues on the back:

What do I need for Atrius Spaces? (continued)

Currently, any nCM PDT occupancy sensor manufactured in 2013 or earlier are currently being updated to support the application. Currently, they are not supported. Pre-2013 nCM PDT sensors with the photocell, dimming, or relay options are still supported. All other nLight occupancy sensors are supported.

- nLight ECLYPSE™ (with latest device firmware)
- Digital Floorplans (required formats: .jpeg or .png)
- Microsoft Azure Active Directory

I already have an nLight ECLYPSE, networked nLight system, and nLight occupancy sensors. Do I need to re-purchase anything?

If you already have an nLight ECLYPSE and nLight sensors, your devices can be upgraded via firmware. When the latest firmware has been added, Atrius Spaces will be ready to begin setup.

How do I update to the latest firmware?

To access latest firmware, login to the Acuity Brands website. Firmware updates are available on the Agents page under Firmware and Software Updates.

I have a networked nLight system and occupancy sensors, but an nGWY2 as my controller. can I get Atrius Spaces?

If you have an nGWY2 on your networked nLight system, you can replace it with an nLight ECLYPSE™. Once the nLight ECLYPSE™ is installed, connected to the internet, and updated, Atrius Spaces will be ready to begin setup.

How do I access the application?

Atrius Spaces is accessed by a web browser. Simply type in the URL (<https://smartoffice.acuitynext.com>), and log in with your username and password.

How do the occupancy sensors collect data?

When an occupant passes by an occupancy sensor, the sensor is triggered, alerting the network that someone is present. The nLight ECLYPSE can now store these state changes to know when a space is occupied or unoccupied. Over time, the data collected shows a story of usage throughout the week. Collecting this data does not interfere with the occupancy sensors original purpose of dimming or turning off the lights for energy purposes. Also, this does not collect any personal identifiable information. The sensor can only detect motion, not the count of individuals within a space.

Does this mean that my nLight ECLYPSE can do both Atrius Spaces and lighting control in a single controller?

Yes, Atrius Spaces, nLight ECLYPSE, and nLight devices have been designed to operate simultaneously.

How many nLight devices can be handled on the new nLight ECLYPSE?

While the nLight ECLYPSE supports up to 1500 devices, Acuity Brands recommends no more than 750 devices per nLight ECLYPSE for an optimal user experience of our EDGE applications.

Why do I need Microsoft Azure Active Directory?

In order to keep your building information secure, Atrius Spaces leverages your company login information by using Microsoft Azure Active Directory for authentication. If your company uses Microsoft Office 365, you most likely will also be using Microsoft Azure Active Directory. Check with your IT group to make sure your company is using Microsoft Azure Active Directory. Soon we will be adding more authentication schemes to allow for other login types.

What if I have Fresco controllers on my nLight network?

Fresco controllers are not currently supported by Atrius Spaces. Any nLight occupancy sensor that is on a Fresco network will not be able to be seen by the Atrius network.