

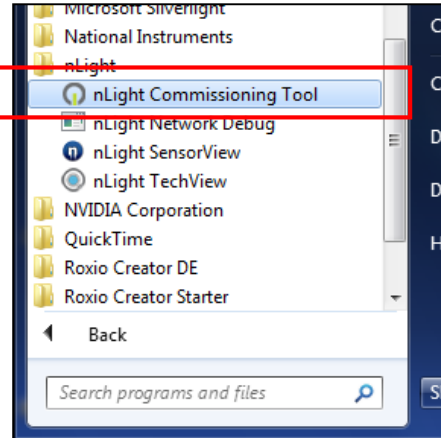
Quick Commissioning Guide

Step 1: install nLight SensorView Software with the Commissioning Tool Plug-in:

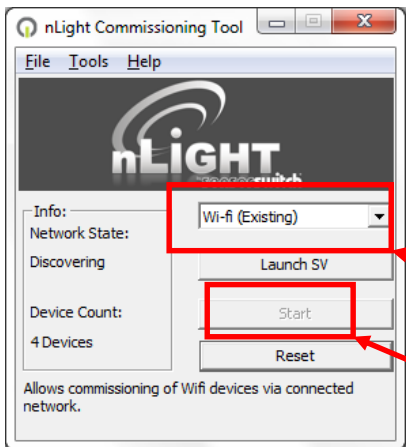
http://nlightcontrols.com/wp-content/uploads/sensorview_install.pdf

Step 2: Via the host computer's **Start** menu navigate and launch the nLight Commissioning Tool application:

*Start->All Programs->nLight->
nLight Commissioning Tool*

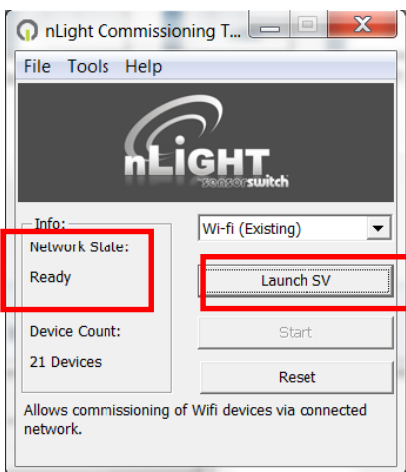


Step 3: All nWiFi devices are defaulted to join WiFi networks with an SSID starting with "nLight". To facilitate commissioning, start a temporary WiFi network with the SSID of "nLight" (for example using a temporary WiFi router).



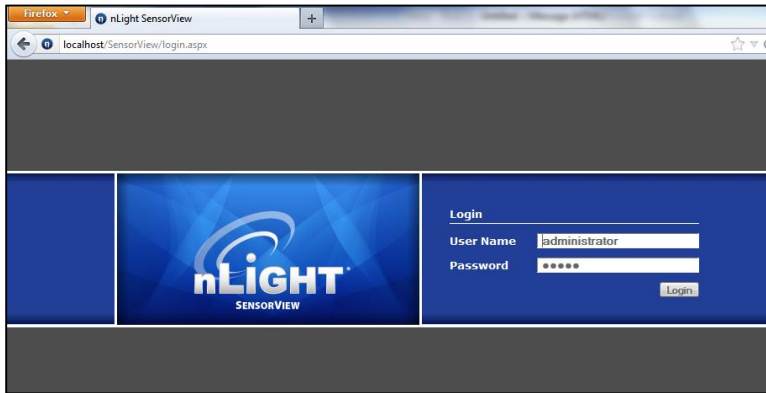
Step 4: With the computer that is hosting SensorView, join this temporary WiFi network via a WiFi or a wired Ethernet connection.

Step 5: Make sure *WiFi (Existing)* is selected and click **Start**.

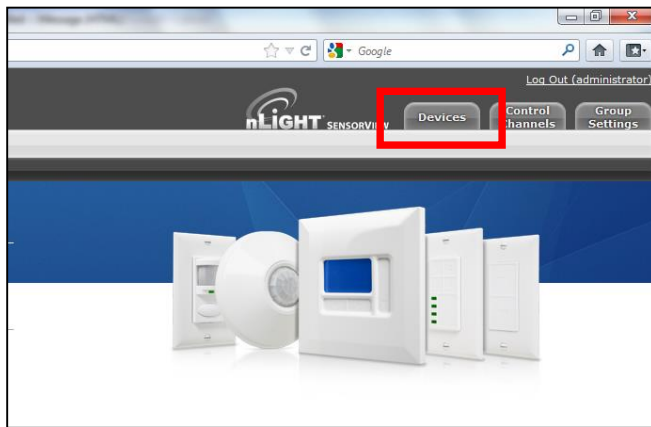


Step 6: Once the Network State displays *Ready*, click **Launch SV**.

Step 7: Login with the following credentials:

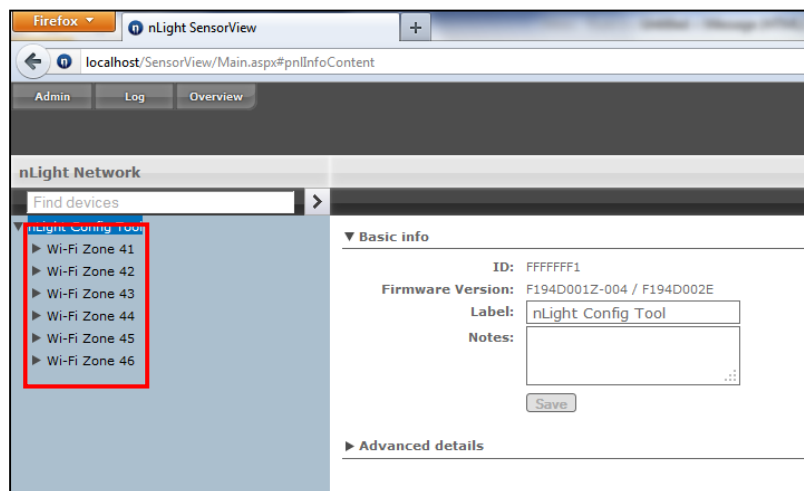


Username: **administrator**
Password: **admin**



Step 8: Once logged in you will be directed to the overview page. From here navigate to the Devices page by clicking the **Devices** tab at the top right.

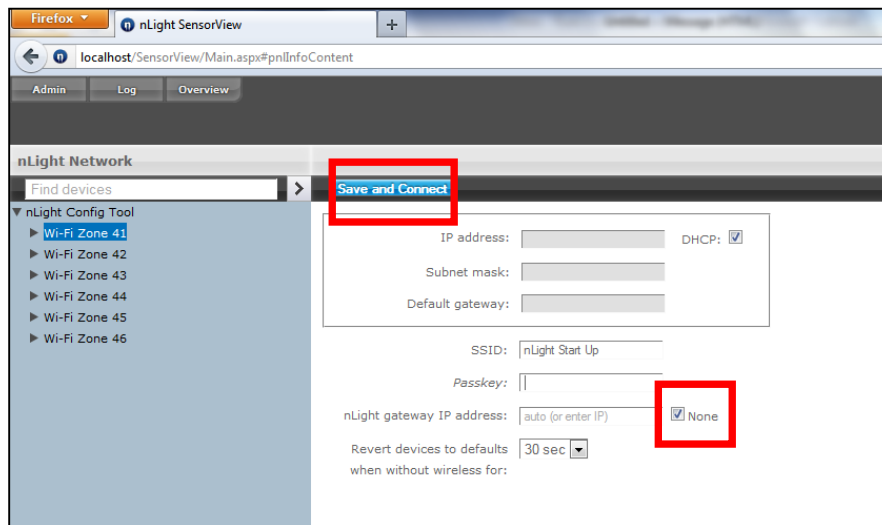
Step 9: Once at the devices page you will see a device tree on the left. At the top of the tree will be the virtual gateway labeled **nLight Config Tool**. Below the nLight Config Tool you will see *nWiFi Zone xx*.



Step 10: To move the nWiFi devices from the temporary (SSID “nLight”) WiFi network over to a secure network, click on one of the *nWiFi Zone xx* and then click the **Wireless** tab at the top right. The below screen will be displayed to allow you to enter credentials for a secure network.

Ensure that **None** is checked in the nLight gateway IP address box, as per the below picture.

Once the chosen SSID and Passkey have been entered, click the **Save and Connect** button at the top left; the device will immediately start scanning for that network.



If the specified network is visible to the device, it will join it immediately.

If the new network is not visible or running, the device will rejoin the open “nLight” network after about 30 seconds.

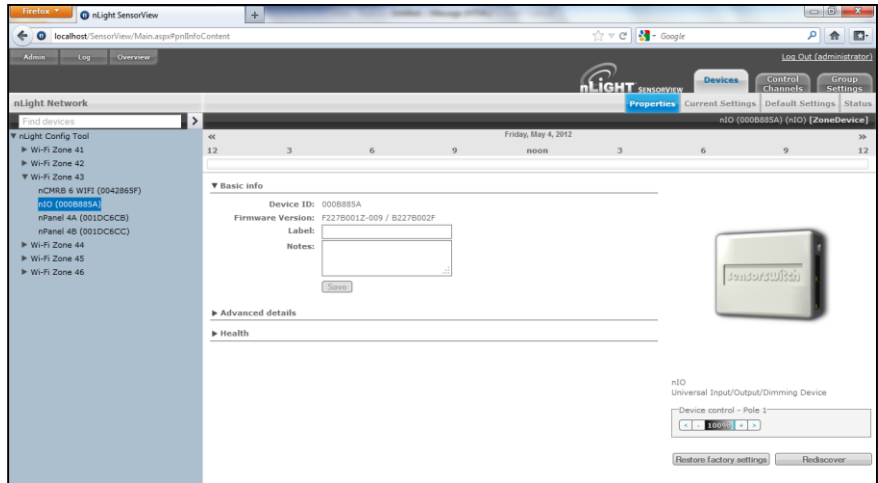
This will allow you to preprogram everything prior to installation if you choose to do so.

Step 11: Once all the nWiFi devices have been moved to the secure network, shut down SensorView, move the host SensorView computer to the specified secure network, and relaunch the nLight Commissioning Tool (See Step 2 above). Click **Start** to discover the nWiFi devices.

Step 12: SECURITY NOTE! Once commissioning is complete, always shutdown the temporary open WiFi network with the SSID of “nLight”. Always enable security on the final WiFi network, and follow standard password best practices such as using a sufficiently complicated passkey, and not reusing passkeys.

Step 13: When the **Network State** is *Ready*, click **Launch SV**. Login and return to the Devices page (Steps 4-6 above).

Step 14: The **Properties** page will be displayed once a device is selected and a picture will be shown to the right of screen. Applicable functions present in the device are located beneath this image. Other settings and status for each device are accessed from the respective tabs on the top right.



The **Status** page will show you the current state(s) of the chosen device's monitored parameters.

The settings can be changed via the **Default Settings** or **Current Settings** page. The Default settings define the operation of the device if the upstream nLight Gateway (if present) becomes unavailable or if the WiFi network is no longer present.

