



## CONTENTS

### INCANDESCENT

4" IC/Non-IC Housings & Trims .....	340
5" IC Housings & Trims .....	341
6" IC/Non-IC Housings & Trims .....	342, 344
6" IC Shallow Housings & Trims.....	343, 345
6" IC High-Wattage/Sloped-Ceiling Housings & Trims.....	346

### COMPACT FLUORESCENT

6" IC Housings & Trims .....	347
6" IC/Non-IC Housings & Trims .....	348-349
5" IC Housings & Trims .....	350

### LOW VOLTAGE

4" Non-IC Housings & Trims .....	351-352
4" IC Housings & Trims .....	353

### LIGHT COMMERCIAL

6" Non-IC Incandescent Housings & Trims.....	354
6" Non-IC CFL Housings & Trims.....	355

### INCANDESCENT-MRI

6" IC/Non-IC Housings & Trims .....	356
6" IC Shallow Housings & Trims.....	357

### STEPLIGHTS

Wet Location .....	358
Damp Location.....	358

PACKAGING.....	359
----------------	-----

# L3 L3R



**Intended Use**  
Recessed incandescent housings for 2x8 and 2x6 new construction (L3) or remodel (L3R) applications. Approved for direct burial in insulation and all ceiling and wiring types.

**Construction**  
L3: Air-tight, galvanized steel pan with aluminum can and junction box with four built-in ROMEX® clamps and ground wire. Rated for 90°C. Factory-installed captive

bar hangers that span up to 24 o.c. and feature stepped shank nail with integral T-bar locks. Two locking screws hold fixture position. Socket clips to trim to ensure proper and consistent lamp position. Suitable for ceilings up to 1-1/2" thick.

L3R: Air-tight aluminum housing with heavy-gauge galvanized steel raceway arm. Remodel clips for installation in existing plaster, sheet rock or mechanical ceilings.

Galvanized steel junction box with three built-in ROMEX® clamps and ground wire. Not suitable for pulling wires. Rated for 90°C. Socket clips to trim to ensure proper and consistent lamp position.

**Listings**  
UL Listed to U.S. and Canadian safety standards.



Example: L3 3B1

**ORDERING INFORMATION** For shortest lead times, configure products using **bolded options**.

Series	Reflector	Options
L3 L3R Housings sold in resale packs of six (R6).	Choose reflector below. Torsion springs will be designated with a Housing and reflector may be ordered separately.	PHC Poke-home wire connectors

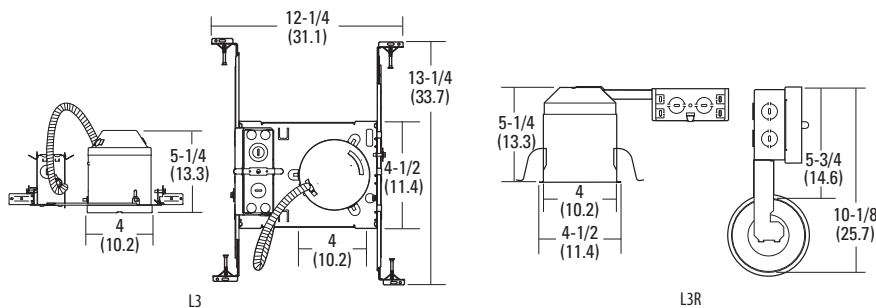
IC/Non-IC Rated Full Reflectors: All reflectors are damp location listed. WETlite™ is wet location listed. Lamp types and maximum wattages are listed for each reflector. White flange standard, except as noted.

Open narrow flange	Shallow baffle	Deep baffle	Eyeball	Wallwash
<b>301</b> White <b>301BN</b> Brushed nickel <sup>1</sup> <b>301ORB</b> Oil-rubbed bronze <sup>1</sup> <b>301BZA</b> Antique bronze <sup>1</sup> IC 30 R20 35 PAR20 Non-IC 50 PAR20	<b>3B1</b> Black <b>3B1W</b> White <b>3B1BN</b> Brushed nickel <sup>1</sup> <b>3B1ORB</b> Oil-rubbed bronze <sup>1</sup> <b>3B1BZA</b> Antique bronze <sup>1</sup> IC 35 PAR20 50 PAR20 (3B1W only) 50 R20 (3B1W only) Non-IC 50 PAR20	<b>3B2</b> Black baffle <b>3B2W</b> White baffle IC 30 R20 (3B2W only) 35 PAR20 (3B2W only) Non-IC 50 PAR20 (3B2 only) 50 R20	<b>3E1</b> White <b>3E1BN</b> Brushed nickel <sup>1</sup> <b>3E1ORB</b> Oil-rubbed bronze <sup>1</sup> <b>3E1BZA</b> Antique bronze <sup>1</sup> IC 50 R20 50 PAR20	<b>3W1</b> White Non-IC 50 R20 50 PAR20
Pinhole	WETlite™			
<b>3S1</b> White IC 35 PAR20 Non-IC 50 PAR20	<b>3H20</b> White <b>3H20PC</b> Polished chrome <sup>1</sup> <b>3H20BN</b> Brushed nickel <sup>1</sup> <b>3H20ORB</b> Oil-rubbed bronze <sup>1</sup> <b>3H20BZA</b> Antique bronze <sup>1</sup> IC 75PAR30 (lamp included)			

**ADDITIONAL INFORMATION** For additional product information, visit [www.lithonia.com](http://www.lithonia.com).

ACCESSORIES	
ORDER SEPARATELY	
CTR3	3" goof ring, white
ATK3 R6	3" air-tight trim kit

Drawings are for dimensional detail only and may not represent actual mechanical configuration. Dimensions are shown in inches (centimeters) unless otherwise noted.



**Notes**  
1 Flange matches trim finish. Please consult [www.lithonia.com](http://www.lithonia.com) for a full listing of Contractor Select products.

PRODUCT INFORMATION

**Intended Use**

Recessed incandescent housings for 2x8 new construction (L5) or remodel construction (LSR). Approved for direct burial in insulation and all ceiling and wiring types.

**Construction**

L5: Air-tight, galvanized steel pan with aluminum can and junction box with four built-in ROMEX® clamps and

ground wire. Rated for 90°C. Factory-installed captive bar hangers that span up to 24 o.c. and feature stepped shank nail with integral T-bar locks. Two locking screws hold fixture position. Socket clips to trim to ensure proper and consistent lamp position.

LSR: Air-tight aluminum housing with heavy-gauge galvanized steel raceway arm. Remodel clips for installation in existing plaster, sheet

rock or mechanical ceilings. Galvanized steel junction box with three built-in ROMEX® clamps and ground wire. Not suitable for pulling wires. Rated for 90°C. Socket clips to trim to ensure proper and consistent lamp position.

Trim retention (clips): Retaining clips riveted to top of reflector hold trim inside housing.

Trim retention (TOR): Two side-mounted torsion springs on the trim and two receiving brackets in the can, ensure a consistently tight fit with the ceiling.

Suitable for ceilings up to 1-1/2" thick.

**Listings**

UL Listed to U.S. and Canadian safety standards.

**L5  
LSR**



ORDERING INFORMATION

For shortest lead times, configure products using **bolded options**.

Example: L5 5B2W TOR

Series	Reflector	Options
L5 LSR Housings sold in resale packs of six (R6).	Choose reflector below. Torsion springs will be denigrated with a TOR in the nomenclature. Riveted clips will have no designator. Housing and reflector may be ordered separately.	PHC Poke-home wire connectors.

IC Rated Full Reflectors: All reflectors are damp location listed. Lensed and WETlite™ reflectors are wet location listed. These IC trims also can be used in Non-IC applications when using lamps and wattages listed below. White flange standard, except as noted.

Open wide flange	Open narrow flange	Shallow baffle	Deep baffle	Eyeball
<b>501 TOR</b> White 501BN TOR Brushed nickel <sup>1</sup> 501ORB TOR Oil-rubbed bronze <sup>1</sup> 501BZA TOR Antique bronze <sup>1</sup> IC 50 R20 65 BR40 75 PAR30	<b>502 TOR</b> White 502A Clear diffuse 502AZ Clear specular 502BLZ Black specular IC 50 R20 65 BR40 60 PAR38 (Anodized) 75PAR30 (short neck)	<b>5B1 TOR</b> Black 5B1W TOR White IC 50 R20 50 PAR20 75 PAR30 (short neck)	<b>5B2 TOR</b> Black <b>5B2W TOR</b> White 5B2BN TOR Brushed nickel <sup>1</sup> 5B2ORB TOR Oil-rubbed bronze <sup>1</sup> 5B2BZA TOR Antique bronze <sup>1</sup> IC 50 R20 65 BR30 50PAR30 60 PAR38	<b>5E1</b> White 5E1BN Brushed nickel <sup>1</sup> 5E1ORB Oil-rubbed bronze <sup>1</sup> 5E1BZA Antique bronze <sup>1</sup> IC 50 R20 65 BR30 50 PAR20 75 PAR30 (long neck)
Polycarbonate lens	WETlite™			
<b>5LD1</b> Drop opal IC 40 A19	<b>5H2O TOR</b> White 5H2OBN TOR Brushed nickel <sup>1</sup> 5H2OORB TOR Oil-rubbed bronze <sup>1</sup> 5H2OBZA TOR Antique bronze <sup>1</sup> IC 75 PAR38 (lamp included)			

ADDITIONAL INFORMATION

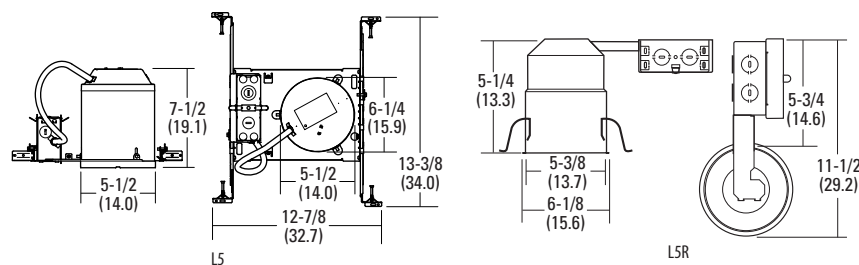
For additional product information, visit [www.lithonia.com](http://www.lithonia.com).

ACCESSORIES

ORDER SEPARATELY

CTR5	5" goof ring, white
ATK5 R6	5" air-tight trim kit

Drawings are for dimensional detail only and may not represent actual mechanical configuration. Dimensions are shown in inches (centimeters) unless otherwise noted.



**Notes**

1 Flange matches trim finish. Please consult [www.lithonia.com](http://www.lithonia.com) for a full listing of Contractor Select products.

# L7X L7XR



**Intended Use**  
Recessed incandescent housings for 2x8 new construction (L7X) or remodel construction (L7XR). Approved for direct burial in insulation and all ceiling and wiring types.

**Construction**  
L7X: Air-tight, galvanized steel pan with aluminum can and junction box with four built-in ROMEX® clamps and ground wire. Rated for 90°C. Factory-installed captive bar hangers that span up to 24 o.c. and feature stepped

shank nail with integral T-bar locks. Two locking screws hold fixture position. Socket clips to trim to ensure proper and consistent lamp position.

L7XR: Air-tight aluminum housing with heavy-gauge galvanized steel raceway arm. Remodel clips for installation in existing plaster, sheet rock or mechanical ceilings. Galvanized steel junction box with three built-in ROMEX® clamps and ground wire. Not suitable for pulling wires. Rated for 90°C.

Socket clips to trim to ensure proper and consistent lamp position.

Trim retention (clips): Retaining clips riveted to top of reflector hold trim inside housing.

Trim retention (TOR): Two side-mounted torsion springs on the trim and two receiving brackets in the can, ensure a consistently tight fit with the ceiling.

Suitable for ceilings up to 1-1/2" thick.

**Listings**  
UL Listed to U.S. and Canadian safety standards.



**ORDERING INFORMATION** For shortest lead times, configure products using **bolded options**.

Example: L7X 7B2W TOR

Series	Reflector	Options
L7X L7XR Housings sold in resale packs of six (R6).	Choose reflector below. Torsion springs will be designated with a TOR in the nomenclature. Riveted clips will have no designation. Housing and reflector may be ordered separately. <sup>3</sup>	PHC Poke-home wire connectors

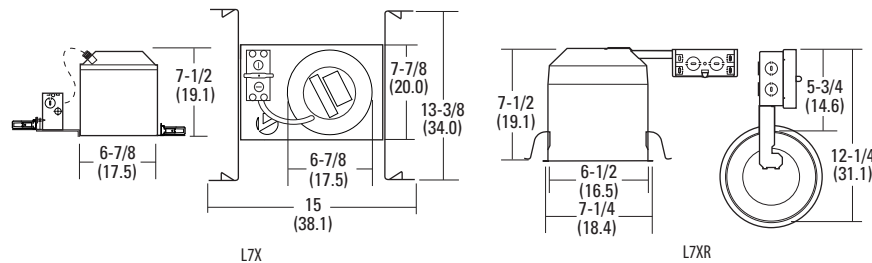
IC/Non-IC Rated Full Reflectors: All reflectors are damp location listed. Lensed reflectors are wet location listed. Lamp type and maximum wattages are listed for each trim. White flange standard, except as noted.

Open wide flange	Open narrow flange	Open narrow flange	Baffle narrow flange	Baffle narrow flange
703 TOR White  IC 75 PAR30 65 BR30	702 TOR White <sup>1</sup> 702A Clear diffuse 702AZ Clear specular 702BLZ Black specular  IC 65 BR30 75 PAR30	705 TOR White <sup>1</sup> 705A Clear diffuse 705AZ Clear specular 705BLZ Black specular  Non-IC 120 PAR38 120 BR40	7B2 TOR Black 7B2W TOR White <sup>1</sup> 7B2BN TOR Brushed nickel <sup>2</sup> 7B2ORB TOR Oil-rubbed bronze <sup>2</sup> 7B2BZA TOR Antique bronze <sup>2</sup>  IC 65 BR30 75 PAR30	7B5 Black 7B5W White <sup>1</sup>  Non-IC 120 BR40 120 PAR38
Baffle wide flange	Eyelid wallwash	Eyeball	Polycarbonate lens	
7B3 TOR Black 7B3W TOR White  IC 75 PAR30 65 BR30	7W1 White  IC 40 A19	7E1 TOR White 7E1BN TOR Brushed nickel <sup>2</sup> 7E1ORB TOR Oil-rubbed bronze <sup>2</sup> 7E1BZA TOR Antique bronze <sup>2</sup>  IC 65 BR30 75 PAR30	7LD1 Drop opal <sup>1</sup>  IC 40 A19	

**ADDITIONAL INFORMATION** For additional product information, visit [www.lithonia.com](http://www.lithonia.com).

ACCESSORIES	
ORDER SEPARATELY	
CTR6	6" goof ring, white
ATK6 R6	6" air-tight trim kit

Drawings are for dimensional detail only and may not represent actual mechanical configuration. Dimensions are shown in inches (centimeters) unless otherwise noted.



**Notes**  
1 For plastic flange, add suffix PF to catalog number (Example: 702 PF).  
2 Flange matches trim finish.  
3 6 and C series trims also compatible trim options.  
Please consult [www.lithonia.com](http://www.lithonia.com) for a full listing of Contractor Select products.

PRODUCT INFORMATION

**Intended Use**

Recessed incandescent housings for 2x6 new construction (L7X) or remodel construction (L7XR). Approved for direct burial in insulation and all ceiling and wiring types.

**Construction**

L7XP: Air-tight, galvanized steel pan with aluminum can and junction box with four built-in ROMEX® clamps and ground wire. Rated for 90°C. Factory-installed captive

bar hangers that span up to 24 o.c. and feature stepped shank nail with integral T-bar locks. Two locking screws hold fixture position. Socket clips to trim to ensure proper and consistent lamp position.

L7XPR: Air-tight aluminum housing with heavy-gauge galvanized steel raceway arm. Remodel clips for installation in existing plaster, sheet rock or mechanical ceilings. Galvanized steel junction box

with three built-in ROMEX® clamps and ground wire. Not suitable for pulling wires. Rated for 90°C. Socket clips to trim to ensure proper and consistent lamp position.

Trim retention (clips): Retaining clips riveted to top of reflector hold trim inside housing.

Trim retention (TOR): Two side-mounted torsion springs on the trim and two receiving brackets in the can, ensure

a consistently tight fit with the ceiling.

Suitable for ceilings up to 1-1/2" thick.

**Listings**

UL Listed to U.S. and Canadian safety standards.

# L7XP L7XPR



ORDERING INFORMATION

For shortest lead times, configure products using **bolded options**.

**Example: L7XP 701 TOR**

Series	Reflector	Options
<b>L7XP</b> <b>L7XPR</b> Housings sold in resale packs of six (R6).	Choose reflector below. Torsion springs will be designated with a TOR in the nomenclature. Riveted clips will have no designation. Housing and reflector may be ordered separately. <sup>3</sup>	PHC Poke-home wire connectors

IC Rated Full Reflectors: All reflectors are damp location listed. Lensed reflectors are wet location listed. These IC reflectors also can be used in Non-IC applications when using the lamps and wattages listed below. White flange standard.

Open wide flange	Baffle narrow flange	Baffle wide flange	Eyelid wallwash	Eyeball
<b>701 TOR</b> White  IC 65 BR30 75 PAR30	<b>7B0W</b> White  IC 65 BR30 75 PAR30	<b>7B1</b> Black <b>7B1W TOR</b> White  IC 65 BR30 75 PAR30	<b>7W1</b> White  IC 40 A19	<b>7E1 TOR</b> White <b>7E1BN TOR</b> Brushed nickel <sup>2</sup> <b>7E1ORB TOR</b> Oil-rubbed bronze <sup>2</sup> <b>7E1BZA TOR</b> Antique bronze <sup>2</sup>  IC 65 BR30 75 PAAR30
Regressed eyeball	Polycarbonate lens	Polycarbonate lens		
<b>7RE1</b> White  IC 65 BR30 75 PAR30	<b>7LD1</b> Drop opal <sup>1</sup>  IC 40 A19	<b>7LD2</b> Drop prismatic <sup>1</sup>  IC 40 A19		

ADDITIONAL INFORMATION

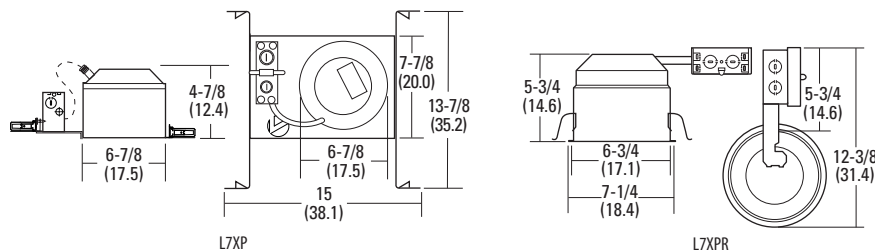
For additional product information, visit [www.lithonia.com](http://www.lithonia.com).

**ACCESSORIES**

ORDER SEPARATELY

- CTR6 6" goof ring, white
- ATK6 R6 6" air-tight trim kit

Drawings are for dimensional detail only and may not represent actual mechanical configuration. Dimensions are shown in inches (centimeters) unless otherwise noted.



**Notes**

- For plastic flange, add suffix PF to catalog number (Example: 7LD1 PF).
- Flange matches trim finish.
- C series trims also compatible trim options.

Please consult [www.lithonia.com](http://www.lithonia.com) for a full listing of Contractor Select products.

# LC6



**Intended Use**  
Recessed incandescent housing for 2x8 new construction rated IC and Non-IC. Approved for direct burial in insulation. Not for pulling wires.

**Construction**  
Air-tight, aluminum housing with engineering-grade thermoplastic frame and

junction box with four built-in ROMEX® clamps and ground wire. Pre-assembled poke-home connectors for ease of wiring.

Rated for 90°C. Factory-installed captive bar hangers that span up to 24 o.c. and feature stepped shank nail with integral T-bar locks.

Two locking screws hold fixture position. Socket clips to trim to ensure proper and consistent lamp position. Trim retention (clips): Retaining clips riveted to top of reflector hold trim inside housing.

Trim retention (TOR option): Two side-mounted torsion springs on the trim and two receiving brackets in the can,

ensure a consistently tight fit with the ceiling.

Suitable for ceilings up to 1-1/2" thick.

**Listings**  
UL Listed to U.S. and Canadian safety standards.



**Example:** LC6 602 TOR

**ORDERING INFORMATION** For shortest lead times, configure products using **bolded options**.

Series	Reflector
<b>LC6</b> Housings sold in resale packs of six (R6).	Choose reflector below. Torsion springs will be designated with a TOR in the nomenclature. Riveted clips will have no designation. Housing and reflector may be ordered separately. <sup>3</sup>

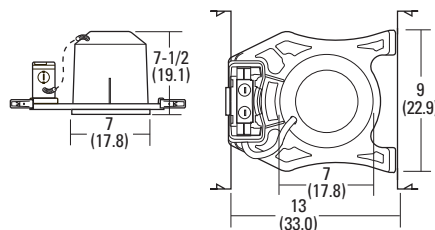
IC/Non-IC Rated Full Reflectors: All reflectors are damp location listed. Lensed reflectors are wet location listed. Lamp type and maximum wattages are listed for each reflector. White flange standard, except as noted.

Open wide flange	Deep open, narrow flange	Shallow open, narrow flange	Baffle wide flange	Baffle narrow flange
601 White 601 TOR White 601BN TOR Brushed nickel <sup>1</sup> 601ORB TOR Oil-rubbed bronze <sup>1</sup> 601BZA TOR Antique bronze <sup>1</sup>	602 White 602 TOR White 602A TOR Clear diffuse 602AZ TOR Clear specular 602BN TOR Brushed nickel <sup>1</sup> 602ORB TOR Oil-rubbed bronze <sup>1</sup> 602BZA TOR Antique bronze <sup>1</sup>	603AZ Clear specular	6B1 Black 6B1 TOR Black 6B1W White 6B1W TOR White 6B1BN TOR Black baffle/brushed nickel flange <sup>1</sup>	6B2 Black 6B2W White 6B2BN TOR Black baffle/brushed nickel flange <sup>1</sup>
IC 65 BR30 75 PAR30	Non-IC 100 A19 120 BR40 150 PAR38 IC 65 BR40	Non-IC 100 A19 150 PAR38 120 BR40	IC 40 A19 65 BR30 75 PAR30	Non-IC 100 A19 120 BR40 150 PAR38
Baffle, narrow flange	Clear diffused upper reflector, baffle	Clear diffused upper reflector, cone	Baffle eyeball	Regressed with baffle trim
6B4 Black 6B4W White	6B3 Black baffle 6B3W White baffle	6C3AZ Clear specular 6C3BLZ Black specular	40° vertical tilt 6E2 White/black baffle	40° vertical tilt 6RE1 White/black baffle trim 6RE1W White/white baffle trim
Non-IC 100 A19 120 BR40 150 PAR38	Non-IC 100 A19 120 BR40 150 PAR38	Non-IC 100 A19 120 BR40 150 PAR38	IC 65 BR30 75 PAR30	IC 65 BR30 75 PAR30
Regressed w/ baffle trim and eyeball	WETlite™	Polycarbonate lens	Glass lens	
40° vertical tilt 6RE2 White with black baffle trim 6RE2W White with white baffle trim	6H20 TOR White 6H20BN TOR Brushed nickel <sup>1</sup> 6H20ORB TOR Oil-rubbed bronze <sup>1</sup> 6H20BZA TOR Antique bronze <sup>1</sup>	6LF1 Flush opal <sup>2</sup> 6LF2 Flush prismatic <sup>2</sup> 6LD1 Drop opal <sup>2</sup> 6LD2 Drop prismatic <sup>2</sup>	6LD3 Drop opal 6LF3 Flat white 6L4 Fresnel 6LDB3 Drop opal baffle 6LFB3 Flat white baffle 6LB4 Fresnel baffle	
IC 65 BR30 75 PAR30	IC 75 PAR30 75 PAR38	IC 60 A19	IC 75 A19	

**ADDITIONAL INFORMATION** For additional product information, visit [www.lithonia.com](http://www.lithonia.com).

ACCESSORIES ORDER SEPARATELY	
CTR6	6" goof ring, white
ATK6 R6	6" air-tight trim kit

Drawings are for dimensional detail only and may not represent actual mechanical configuration. Dimensions are shown in inches (centimeters) unless otherwise noted.



**Notes**

- 1 Flange matches trim finish.
- 2 For plastic flange, add suffix PF to catalog number (Example: 6LFT PF)
- 3 7 and C series trims also compatible trim options.

PRODUCT INFORMATION

**Intended Use**

Recessed incandescent housing for 2x6 new construction. Approved for direct burial in insulation. Not for pulling wires.

**Construction**

Air-tight, aluminum housing with engineering-grade

thermoplastic frame and junction box with four built-in ROMEX® clamps and ground wire. Pre-assembled poke-home connectors for ease of wiring. Rated for 90°C. Factory-installed captive bar hangers that span up to 24 o.c. and feature stepped shank nail with integral T-bar

locks. Two locking screws hold fixture position. Socket clips to trim to ensure proper and consistent lamp position.

Trim retention (clips): Retaining clips riveted to top of reflector hold trim inside housing.

Trim retention (TOR): Two side-mounted torsion springs

on the trim and two receiving brackets in the can, ensure a consistently tight fit with the ceiling.

Suitable for ceilings up to 1-1/2" thick.

**Listings**

UL Listed to U.S. and Canadian safety standards.

**LCP**



ORDERING INFORMATION

For shortest lead times, configure products using **bolded options**.

**Example:** LCP CB1W TOR

**Series**

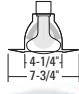
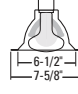



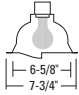
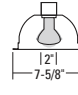

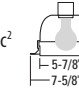
**LCP**

Housings sold in resale packs of six (R6).

**Reflector**

Choose reflector below. Torsion springs will be designated with a TOR in the nomenclature. Riveted clips will have no designation. Housing and reflector may be ordered separately.

IC Rated Full Reflectors: All reflectors are damp location listed. Lensed trims are wet location listed. These IC reflectors also can be used in Non-IC applications when using lamps and maximum wattages listed below. White flange standard, except as noted.

Open wide flange		Open narrow flange		Baffle narrow flange		Open eyeball		Baffled eyeball	
<b>CO1</b>	White	<b>CO2</b>	White	<b>CB1</b>	Black	<b>CE1</b>	White	<b>CE2</b>	Black baffle
<b>CO1 TOR</b>	White	<b>CO2A</b>	Clear diffuse <sup>1</sup>	<b>CB1 TOR</b>	Black			<b>CE2W</b>	White baffle
<b>CO1BN TOR</b>	Brushed nickel <sup>1</sup>	<b>CO2AZ</b>	Clear specular <sup>1</sup>	<b>CB1W</b>	White				
<b>CO10RB TOR</b>	Oil-rubbed bronze <sup>1</sup>			<b>CB1W TOR</b>	White				
<b>CO1BZA TOR</b>	Antique bronze <sup>1</sup>								
									
	IC 65 BR30 75 PAR30		IC 65 BR30 75 PAR30		IC 65 BR30 75 PAR30		IC 65 BR30 75 PAR30		IC 65 BR30 75 PAR30
Shielded wallwash		Shielded pinhole		Polycarbonate lens		Polycarbonate lens			
<b>7W1</b>	White	<b>CS1</b>	White	<b>CLD1</b>	Drop opal <sup>2</sup>	<b>CLF1</b>	Flush opal <sup>2</sup>		
							<b>CLF2</b>	Flush prismatic <sup>2</sup>	
	IC 40 A19		IC 40 A19 50 R20 50 PAR20		IC 40 A19			IC 40 A19	

ADDITIONAL INFORMATION

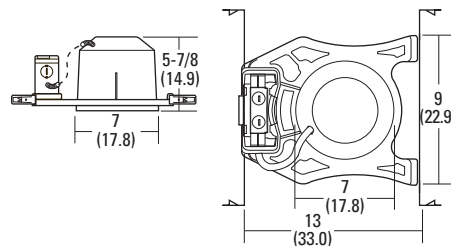
For additional product information, visit [www.lithonia.com](http://www.lithonia.com).

ACCESSORIES

ORDER SEPARATELY

CTR6	6" goof ring, white
ATK6 R6	6" air-tight trim kit

Drawings are for dimensional detail only and may not represent actual mechanical configuration. Dimensions are shown in inches (centimeters) unless otherwise noted.



**Notes**

- 1 Flange matches trim finish.
- 2 For plastic flange, add suffix PF to catalog number (Example: CLD1 PF).

# LI6



**Intended Use**  
Recessed incandescent housings for 2x8 new construction. Approved for direct burial in insulation and all ceiling and wiring types.

**Construction**  
Pre-painted steel housing.  
  
Galvanized steel junction box with four built-in ROMEX®

clamps; six 3/4" knockouts with slots for pryout. Rated for through-branch wiring.  
  
Galvanized bar hangers span up to 24" o.c. and feature built-in nailer and T-bar clips.  
  
Rated for 90°C.  
  
Socket clips to reflector to ensure proper and consistent lamp position.

Trim retention: Housing ships with retention clips which secure reflector upon installation.  
  
**Listings**  
UL Listed to U.S. and Canadian safety standards.



Example: LI6 6S01

**ORDERING INFORMATION** For shortest lead times, configure products using **bolded options**.

Series	Reflector	Options
<b>LI6</b> Housings sold in resale packs of six (R6).	Choose reflector below. Housing and reflector may be ordered separately.	<b>AT</b> Sealed airtight housing to minimize air flow through housing; complies with WSEC and ASTM E283.

IC Rated Full Reflectors: All reflectors are damp location listed. These IC reflectors also can be used in Non-IC applications using lamps and maximum wattages listed below. White flange standard.

Open wide flange		Deep open narrow flange		Baffle wide flange		Baffle narrow flange		Baffle narrow flange	
601	White 	602	White 	6B1	Black 	6B4	Black 	6B2	Black 
602A	Clear diffuse 	602AZ	Clear specular 	6B1W	White 	6B4W	White 	6B2W	White 
IC 60 A19 65 BR30 75 PAR30	IC 60 A19 (white only) 75 A19 (others) 90 BR40 100 PAR38	IC 40 A19 65 BR30 75 PAR30	IC 75 A19 90 BR40 100 PAR38	IC 40 A19 65 BR30 75 PAR30	IC 40 A19 65 BR30/BR40 75 PAR30 75 PAR38				
<b>Cone, clear diffused upper reflector</b>		<b>Sloped baffle</b>		<b>Sloped open</b>		<b>Eyeballs open</b>		<b>Eyelid wallwash</b>	
6C3AZ	Clear specular 	6SB1	Black baffle 	6S01	White 	6E1	White 	6W1	White 
6C3BLZ	Black specular 	6SB1W	White baffle 						
IC 100 A19 100 PAR38 90 BR40	IC 65 BR30 75 PAR30 90 BR40 100 PAR38	IC 65 BR30 75 PAR30 90 BR40 100 PAR38	IC 65 BR30 75 PAR30 90 BR40 100 PAR38	IC 65 BR30 75 PAR30 90 BR40 100 PAR38	IC 65 BR30 75 PAR30	IC 40 A19			

**Lenses**

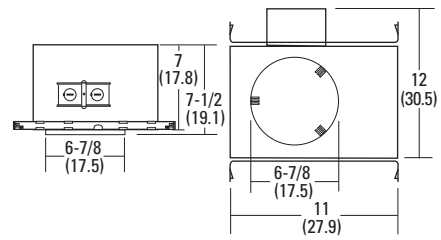
6LD3	Drop opal, white splay 
6LDB3	Drop opal, baffle splay 
6LF3	Flat white, white splay 
6LFB3	Flat white, baffle splay 
6L4	Fresnel, white splay
6LB4	Fresnel, baffle splay

**ADDITIONAL INFORMATION** For additional product information, visit [www.lithonia.com](http://www.lithonia.com).

**ACCESSORIES**  
ORDER SEPARATELY

CTR6	6" goof ring, white
------	---------------------

Drawings are for dimensional detail only and may not represent actual mechanical configuration. Dimensions are shown in inches (centimeters) unless otherwise noted.



PRODUCT INFORMATION

**Intended Use**

Recessed incandescent housings for 2x8 new construction. Approved for direct burial in insulation and all ceiling and wiring types.

**Construction**

Pre-painted steel housing.

Galvanized steel junction box with four built-in ROMEX® clamps; two 1/2" and four 3/4" knockouts with slots for

prout. Rated for through-branch wiring.

Trim retention: Housing ships with retention clips which secure reflector upon installation.

Galvanized bar hangers span up to 24" o.c. and feature built-in nailer and T-bar clips.

Socket attaches to reflector to ensure proper and consistent lamp position.

**Electrical**

Electronic multi-volt ballast, 120V through 277V with end of life protection. Maximum six (three in, three out) #12 AWG conductor. Rated for 90°C supply wire. Ground wire provided. Class P thermally protected ballast protects against improper contact with insulation and approved for through-branch

circuit wiring. Poke-home connector standard.

Socket base: 13W four-pin DTT (G24Q-1), TRT (GX24Q-1); 18W four-pin DTT (G24Q-2), TRT (GX24Q-2); 26W four-pin TRT (GX24Q-3).

**Listings**

UL Listed to U.S. and Canadian safety standards.

# LI6F



Example: LI6F 26/32TRT 6S01 MVOLT

ORDERING INFORMATION

For shortest lead times, configure products using **bolded options**.

Series	Lamp type	Reflector	Voltage	Options
LI6F	18DTT/TRT	Choose reflector below.	<b>MVOLT</b>	ADEZ Advance® Mark X® electronic dimming ballast, 120V or 277V; minimum dimming level 5%
	<b>26/32TRT</b>	Housing and reflector may be ordered separately.	120	GMF Single slow-blow fuse
			277	AT Sealed airtight housing to minimize air flow through rough-in. Complies with WSEC and certified per ASTM E283.

IC-Rated Full Reflectors: All reflectors are damp location listed. These IC reflectors also can be used in Non-IC applications when using lamps and wattages listed below. White flange standard.

Open wide flange		Deep open narrow flange		Baffle wide flange		Baffle narrow flange		Baffle narrow flange	
601	White	<b>602</b>	White	6B1	Black	6B2	Black	<b>6B4</b>	Black
		<b>602A</b>	Clear diffuse	6B1W	White	6B2W	White	<b>6B4W</b>	White
		<b>602AZ</b>	Clear specular						
	IC 32TRT		IC 32TRT		IC 32TRT		IC 32TRT		IC 32TRT
Cone, clear diffused upper reflector		Sloped baffle		Sloped open		Eyeballs open		Eyelid wallwash	
6C3AZ	Clear specular	<b>6SB1</b>	Black baffle	<b>6S01</b>	White	6E1	White	6W1	White
6C3BLZ	Black specular	<b>6SB1W</b>	White baffle						
	IC 32TRT		IC 32TRT		IC 32TRT		IC 32TRT		IC 32TRT
Lenses									
6LD3	Drop opal, white splay								
6LDB3	Drop opal, baffle splay								
6LF3	Flat white, white splay								
6LFB3	Flat white, baffle splay								
6L4	Fresnel, white splay								
6LB4	Fresnel, baffle splay								

ADDITIONAL INFORMATION

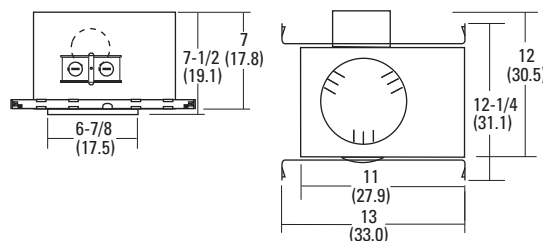
For additional product information, visit [www.lithonia.com](http://www.lithonia.com).

ACCESSORIES

ORDER SEPARATELY

CTR6 6" goof ring, white

Drawings are for dimensional detail only and may not represent actual mechanical configuration. Dimensions are shown in inches (centimeters) unless otherwise noted.



# L7XF L7XFR



**Intended Use**  
Recessed housing rated IC or Non-IC for 2x8 new construction (L7XF) and remodel (L7XFR) applications. Approved for direct burial in insulation.

**Construction**  
L7XF: Air-tight aluminum housing with galvanized steel pan. Factory-installed captive bar hangers that span up to 24 o.c. and feature stepped shank nail with integral T-bar locks. Two locking screws hold fixture in position. Galvanized steel

junction box with four built-in ROMEX® clamps; four 1/2" and two 3/4" knockouts with slots for pryout.

L7XFR: Air-tight aluminum housing with three remodel clips for installation in existing plaster, sheet rock or mechanical ceilings. Heavy-gauge galvanized steel raceway arm. Galvanized steel junction box with four built-in ROMEX® clamps and five 1/2" knockouts with slots for pryout. Not suitable for pulling wires.

Rated for 90°C. Ground wire provided. Removable J-box door for easy access.

Trim retention (clips): Retaining clips riveted to top of reflector hold trim inside housing.

Trim retention (TOR): Two side-mounted torsion springs on the trim and two receiving brackets in the can, ensure a consistently tight fit with the ceiling.

Suitable for ceilings up to 1-1/2" thick.

**Electrical**  
Electronic 120V ballast with end of life protection. Class P thermally protected ballast protects against improper contact with insulation.

Socket base: 13W four-pin DTT (G24Q-1), TRT (GX24Q-1); 18W four-pin DTT (G24Q-2), TRT (GX24Q-2); 26W four-pin TRT (GX24Q-3).

**Listings**  
UL Listed to U.S. and Canadian safety standards.

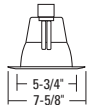
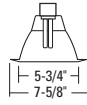
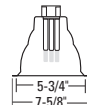
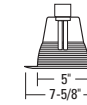
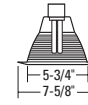
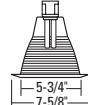
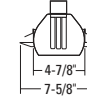
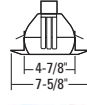

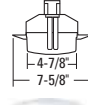


**ORDERING INFORMATION** For shortest lead times, configure products using **bolded options**.

**Example:** L7XF26T 120 7B2W

Series	Voltage	Reflector	Options
<p><u>New construction</u></p> <p>L7XF13T 13W TRT</p> <p>L7XF13D 13W DTT</p> <p>L7XF18T 18W TRT</p> <p>L7XF18D 18W DTT</p> <p><b>L7XF26T</b> 26W TRT</p>	<p><b>120</b></p>	<p>Choose reflector below. Torsion springs will be designated with a TOR in the nomenclature. Riveted clips will have no designation. Housing and reflector may be ordered separately.<sup>3</sup></p>	<p>GMF Single slow-blow fuse</p> <p><b>GSKT</b> Foam gasketing, aids in air-tight installation</p> <p><b>PHC</b> Poke-home wire connectors</p> <p><b>ADEBD</b> Advance® AmbiStar electronic dimming ballast; Class B FCC EMI rating; available in 26W 120V only; optimal dimming range 15%-100% light output</p> <p>WLP 35K four-pin lamp (shipped separately)</p>
<p><u>Remodel</u></p> <p>L7XFR13T 13W TRT</p> <p>L7XFR13D 13W DTT</p> <p>L7XFR18T 18W TRT</p> <p>L7XFR18D 18W DTT</p> <p><b>L7XFR26T</b> 26W TRT</p> <p>Housings sold in resale packs of six (R6).</p>			

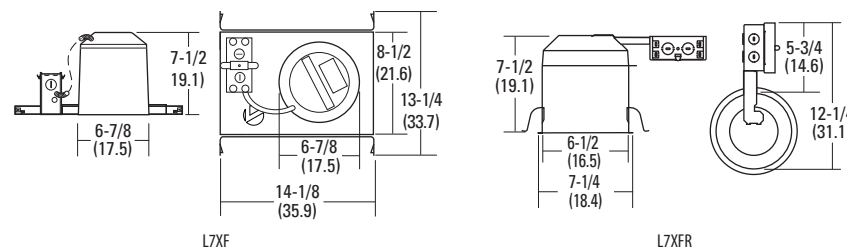
IC Rated Full Reflectors: All reflectors are damp location listed. Lensed reflectors are listed for wet locations. These IC reflectors can also be used in Non-IC applications when using the lamps and wattages listed below. White flange standard, except as noted.

Open wide flange	Open narrow flange	Open deep narrow flange	Baffle wide flange	Baffle narrow flange
<p>703 TOR White</p>  <p>IC 13DTT 26TRT</p>	<p>702 TOR White<sup>1</sup></p> <p>702A Clear diffuse</p> <p>702AZ Clear specular</p> <p>702BLZ Black specular</p>  <p>IC 13DTT 26TRT</p>	<p>705 White</p> <p>705A Clear diffuse</p> <p>705AZ Clear specular</p> <p>705BLZ Black specular</p>  <p>IC 13DTT 26TRT</p>	<p>7B3 TOR Black</p> <p>7B3W TOR White</p>  <p>IC 13DTT 26TRT</p>	<p>7B2 TOR Black</p> <p><b>7B2W TOR</b> White<sup>1</sup></p> <p>7B2BN TOR Brushed nickel<sup>2</sup></p> <p>7B2ORB TOR Oil-rubbed bronze<sup>2</sup></p> <p>7B2BZA TOR Antique bronze<sup>2</sup></p>  <p>IC 13DTT 26TRT</p>
<p><b>Baffle narrow flange</b></p> <p>7B5 Black</p> <p>7B5W White<sup>1</sup></p>  <p>IC 18DTT 26TRT</p>	<p><b>Eyeball wide flange</b></p> <p>7E1TOR White</p> <p>7E1BN TOR Brushed nickel<sup>2</sup></p> <p>7E1ORB TOR Oil-rubbed bronze<sup>2</sup></p> <p>7E1BZA TOR Antique bronze<sup>2</sup></p>  <p>IC 18TRT</p>	<p><b>Regressed eyeball, wide flange</b></p> <p>7RE1 White</p>  <p>IC 18TRT</p>	<p><b>Wallwash narrow flange</b></p> <p>7W1 White</p>  <p>IC 13DTT 13TRT</p>	<p><b>Polycarbonate lens</b></p> <p>7LD1 Drop opal<sup>1</sup></p>  <p>IC 13TRT</p>

**ADDITIONAL INFORMATION** For additional product information, visit [www.lithonia.com](http://www.lithonia.com).

ACCESSORIES	
ORDER SEPARATELY	
CTR6	6" goof ring, white
ATK6 R6	6" air-tight trim kit

Drawings are for dimensional detail only and may not represent actual mechanical configuration. Dimensions are shown in inches (centimeters) unless otherwise noted.



- Notes**
- For plastic flange, add suffix PF to catalog number (Example: 7B2W TOR PF).
  - Flange matches trim finish.
  - 6 series trims also compatible trim option.

# L7XF MVOLT



**Intended Use**

Recessed housing rated IC and Non-IC. For new construction only. Approved for all ceiling and wiring types. Approved for direct burial in insulation.

**Construction**

Air-tight housing. Tested to meet current energy codes. Aluminum housing with galvanized steel pan. Factory-installed captive bar hangers that span up to 24 o.c. and feature stepped shank nail with integral T-bar locks. Two locking screws hold fixture

in position. Galvanized steel junction box with four built-in ROMEX® clamps; four 1/2" and two 3/4" knockouts with slots for pryout. Rated for 90°C. Ground wire provided. Removable J-box doors for easy access.

Trim retention (clips): Retaining clips riveted to top of reflector hold trim inside housing.

Trim retention (TOR): Two side-mounted torsion springs on the trim and two receiving

brackets in the can, ensure a consistently tight fit with the ceiling.

Suitable for ceilings up to 1-1/2" thick.

**Electrical**

Multi-volt (MVOLT), 120V through 277V, electronic ballast with end of life protection standard with TRT lamps. Requires four-pin lamp. Socket assembly clips to top of housing to prevent paint overspray. Socket attaches to reflector to ensure

proper and consistent lamp position. Thermal protection provided against improper lamp usage.

Socket base: 13W four-pin DTT (GX24Q-1), TRT (GX24Q-1); 18W four-pin DTT (GX24Q-2), TRT (GX24Q-2); 26W four-pin TRT (GX24Q-3).

**Listings**

U.L. Listed to U.S. and Canadian safety standards.

Example: L7XF13T MVOLT 7B2W

**ORDERING INFORMATION**

For shortest lead times, configure products using **bolded options**.

Series	Voltage	Reflector	Options
L7XF13T	13W TRT	<b>MVOLT</b> Choose reflector below. Torsion springs will be designated with a TOR in the nomenclature. Riveted clips will have no designation. Housing and reflector may be ordered separately. <sup>3</sup>	GMF Single slow-blow fuse, specify voltage
L7XF13D	13W DTT		PHC Poke-home wire connectors
L7XF18T	18W TRT		WLP 35K four-pin lamp (shipped separately)
L7XF18D	18W DTT		
L7XF26T	26W TRT		

IC Rated Full Reflectors: All reflectors are damp location listed. Lensed reflectors are wet location listed. These IC reflectors can be used in Non-IC applications using lamps and wattages listed below. White flange standard, except as noted.

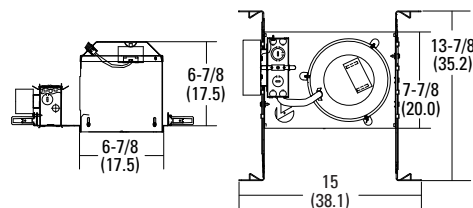
Open wide flange	Open narrow flange	Open deep narrow flange	Baffle wide flange	Baffle narrow flange
703 TOR White  IC 13DTT 26TRT	702 TOR White <sup>1</sup> 702A Clear diffuse 702AZ Clear specular 702BLZ Black specular  IC 13DTT 26TRT	705 White 705A Clear diffuse 705AZ Clear specular 705BLZ Black specular  IC 18DTT 26TRT	7B3 TOR Black 7B3W TOR White  IC 13DTT 26TRT	7B2 TOR Black <b>7B2W TOR</b> White <sup>1</sup> 7B2BN TOR Brushed nickel <sup>2</sup> 7B2ORB TOR Oil-rubbed bronze <sup>2</sup> 7B2BZA TOR Antique bronze <sup>2</sup>  IC 13DTT 26TRT
Baffle narrow flange	Eyeball wide flange	Regressed eyeball, wide flange	Wallwash narrow flange	Polycarbonate lens
7B5 Black 7B5W White <sup>1</sup>  IC 18DTT 26TRT	7E1TOR White 7E1BN TOR Brushed nickel <sup>2</sup> 7E1ORB TOR Oil-rubbed bronze <sup>2</sup> 7E1BZA TOR Antique bronze <sup>2</sup>  IC 18TRT	7RE1 White  IC 18TRT	7W1 White  IC 13DTT 13TRT	7LD1 Drop opal <sup>1</sup>  IC 13TRT

**ADDITIONAL INFORMATION**

For additional product information, visit [www.lithonia.com](http://www.lithonia.com).

ACCESSORIES	
ORDER SEPARATELY	
CTR6	6" goof ring, white
ATK6 R6	6" air-tight trim kit

Drawings are for dimensional detail only and may not represent actual mechanical configuration. Dimensions are shown in inches (centimeters) unless otherwise noted.



**Notes**

- For plastic flange, add suffix PF to catalog number (Example: 7B2W TOR PF).
- Flange matches trim finish.
- 6 series trims also compatible trim option.

PRODUCT INFORMATION

# L5F L5FR



**Intended Use**  
Recessed housing rated IC or Non-IC for new construction (L5F) and remodel (L5FR) applications. Approved for direct burial in insulation.

**Construction**  
L5F: Air-tight aluminum housing with galvanized steel pan. Factory-installed captive bar hangers that span up to 24 o.c. and feature stepped shank nail with integral T-bar locks. Two

locking screws hold fixture in position. Galvanized steel junction box with four built-in ROMEX® clamps, four 1/2" and two 3/4" knockouts with slots for pryout.

L5FR: Air-tight aluminum housing with three remodel clips for installation in existing plaster, sheet rock or mechanical ceilings. Heavy-gauge galvanized steel raceway arm. Galvanized steel junction box with four

built-in ROMEX® clamps, five 1/2" knockouts with slots for pryout. Not suitable for pulling wires.

Rated for 90°C. Ground wire provided. Removable J-box door for easy access.

Trim retention (TOR) is achieved by utilizing two side-mounted torsion springs on the trim and two receiving brackets in the can, ensuring a consistently tight fit with the ceiling.

**Electrical**  
Electronic 120V ballast with end of life protection. Class P thermally protected ballast protects against improper contact with insulation.

Socket base: 13W four-pin DTT (G24Q-1), TRT (GX24Q-1); 18W four-pin DTT (G24Q-2), TRT (GX24Q-2); 26W four-pin TRT (GX24Q-3).

**Listings**  
UL Listed to U.S. and Canadian safety standards.

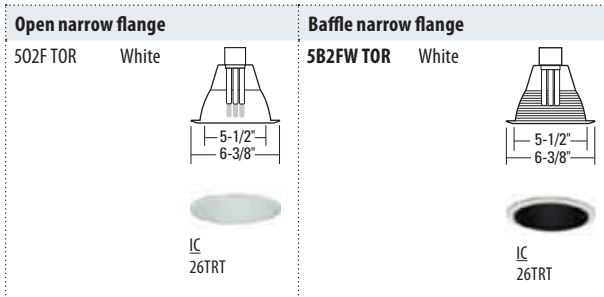
ORDERING INFORMATION

For shortest lead times, configure products using **bolded options**.

**Example:** L5F26T 120 5B2FW TOR

Series		Voltage	Reflector	Options
<u>New construction</u>	<u>Remodel</u>	<b>120</b>	Choose reflector below. Torsion springs will be designated with a TOR in the nomenclature. Riveted clips will have no designation. Housing and reflector may be ordered separately.	GMF Single slow-blow fuse
L5F13T 13W TRT	L5FR13T 13W TRT			GSKT Foam gasketing; aids in air-tight installation
L5F13D 13W DTT	L5FR13D 13W DTT			<b>PHC</b> Poke-home wire connectors
L5F18T 18W TRT	L5FR18T 18W TRT			ADEBD Advance® AmbiStar electronic dimming ballast; Class B FCC EMI rating; available in 26W 120V only; optimal dimming range 15%-100% light output
L5F18D 18W DTT	L5FR18D 18W DTT			WLP 35K four-pin lamp (shipped separately)
<b>L5F26T</b> 26W TRT	<b>L5FR26T</b> 26W TRT			
Housings sold in resale packs of six (R6).				

IC Rated Full Reflectors: All reflectors are damp location listed. These IC reflectors also can be used in Non-IC applications using the lamps and wattages listed below. White flange standard.

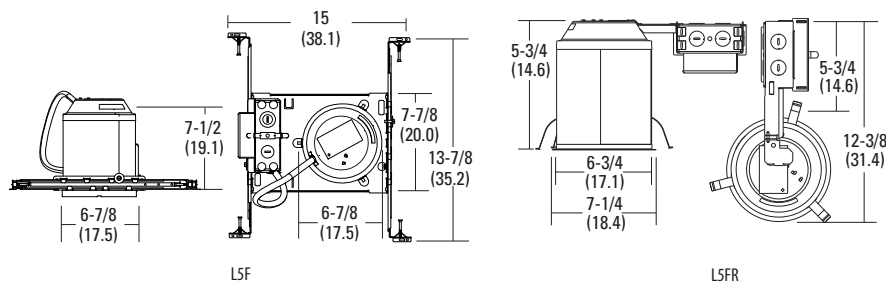


ADDITIONAL INFORMATION

For additional product information, visit [www.lithonia.com](http://www.lithonia.com).

ACCESSORIES	
ORDER SEPARATELY	
CTRS	5" goof ring
ATKS R6	5" air-tight trim kit

Drawings are for dimensional detail only and may not represent actual mechanical configuration. Dimensions are shown in inches (centimeters) unless otherwise noted.



**PRODUCT INFORMATION**

**Intended Use**

Recessed incandescent housings for 2x6 new construction (LV3) or remodel construction (LV3R). Approved for all ceiling and wiring types.

**Construction**

LV3: Air-tight, galvanized steel pan with aluminum can and junction box with four built-in ROMEX® clamps and ground wire. Rated for 90°C. Factory-installed captive bar hangers that span up to 24 o.c. and feature stepped

shank nail with integral T-bar locks. Two locking screws hold fixture position. Suitable for ceilings up to 1-1/2" thick.

LV3R: Air-tight aluminum housing with heavy-gauge galvanized steel raceway arm. Remodel clips for installation in existing plaster, sheet rock or mechanical ceilings. Galvanized steel junction box with three built-in ROMEX® clamps and ground wire. Not suitable for pulling wires. Rated for 90°C.

Trims: 30° vertical tilt standard (except 3VS1 pinhole trim).

**Electrical**

Two-pin porcelain socket with heat shield.

Thermal protection provided against improper insulation usage. Electronic step-down transformer is standard for 120V or 277V. The minimum starting temperature is 0° F, -18°C with short-circuit protection and

meets ANSI/IEEE C62.41 Cat. A transient protection.

**Listings**

UL Listed to U.S. and Canadian safety standards.

**LV3  
LV3R**



Example: LV3 3VB1 120

**ORDERING INFORMATION**

Lead times will vary depending on options selected. Consult with your sales representative.

Series	Reflector	Voltage	Options
LV3	Choose reflector below.	120 <sup>1</sup>	PHC Poke-home wire connectors
LV3R	Housing and reflector may be ordered separately.	277 <sup>2</sup>	

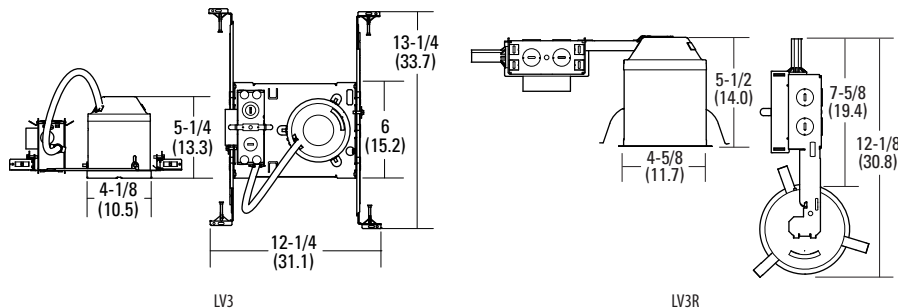
Non-IC Rated Reflectors: Lamp types and maximum wattages are listed for each reflector. White flange standard.

Adjustable cones		Adjustable baffles		Open eyeball		Baffle eyeball		Eyelid wallwash	
3V01AZ	Clear specular	3VB1	Black	3VE1	White	3VE2	Black	3VW1	White
3V01GZ	Gold specular	3VB1W	White			3VE2W	White		
3V01BLZ	Black specular								
Non-IC 50 MR16		Non-IC 50 MR16		Non-IC 50 MR16		Non-IC 50 MR16		Non-IC 50 MR16	
Adjustable wallwash		Shielded slotted		Shielded pinhole					
3VDW1W	White	3VA5	White	3VS1	White				
Non-IC 50 MR16		Non-IC 50 MR16		Non-IC 50 MR16					

**ADDITIONAL INFORMATION**

For additional product information, visit [www.lithonia.com](http://www.lithonia.com).

Drawings are for dimensional detail only and may not represent actual mechanical configuration. Dimensions are shown in inches (centimeters) unless otherwise noted.



**Notes**

- 1 Use dimmers designed for electronic transformers.
- 2 Dimming is not available.

# LP3V



**Intended Use**

New construction applications requiring high-performance vertical reflectors using low-voltage lamps.

**Construction**

Mechanical: Rugged, galvanized steel frame-in with one-piece painted steel can. Retaining clips secure optical system. Galvanized bar hangers span up to 24" o.c. and feature built-in nailers and T-bar clips. Galvanized steel junction box with removable access door, four ROMEX®

knockouts, two 3/4" and four 1/2" nominal conduit knockouts with pryout slots. Maximum ceiling thickness 2".

Trims: 30° vertical tilt standard (except 3VS1 pinhole trim).

**Electrical**

Precision-wound step-down transformer with Class H insulation. For dimming control, use dimmers specifically designed for use with electromagnetic transformers. Two-pin porcelain socket

with heat shield. Rated 90°C supply wire. Ground wire provided. Thermally protected against improper contact with insulation and approved for through-branch circuit wiring.

**Listings**

UL Listed to U.S. and Canadian safety standards.

**ORDERING INFORMATION**

For shortest lead times, configure products using **bolded options**.

**Example: LP3V 3V01AZ 120**

Series	Reflector	Voltage
<b>LP3V</b>	Choose reflector below. Housing and reflector may be ordered separately.	<b>120</b> 277 347

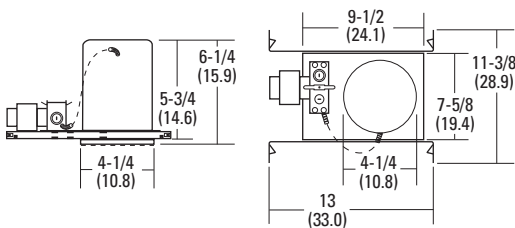
Non-IC-Rated Reflectors: Lamp types and maximum wattages are listed for each reflector. White flange standard.

Adjustable cone	Adjustable with baffle	Eyeball	Baffle eyeball	Eyelid wallwash
3V01AZ Clear specular 3V01BLZ Black specular 3V01GZ Gold specular Non-IC 75 MR16	3VB1 Black 3VB1W White Non-IC 75 MR16	3VE1 White Non-IC 75 MR16	3VE2 Black 3VE2W White Non-IC 75 MR16	3VW1 White Non-IC 75 MR16
Directional wallwash	Slotted aperture	Pinhole		
3VDW1W White Non-IC 75 MR16	3VA5 White baffle Non-IC 75 MR16	3VS1 White Non-IC 75 MR16		

**ADDITIONAL INFORMATION**

For additional product information, visit [www.lithonia.com](http://www.lithonia.com).

Drawings are for dimensional detail only and may not represent actual mechanical configuration. Dimensions are shown in inches (centimeters) unless otherwise noted.



# LIV3



**Intended Use**

Recessed housing rated IC for new construction applications. Approved for direct burial in insulation and through-branch circuit wiring. Approved for most wiring and ceiling types.

**Construction**

Air-tight standard. Meets current energy codes.

Pre-painted steel inner housing and aluminum outer housing mounted to a rugged galvanized steel pan.

Captive bar hangers span 24" and feature built-in nailers and T-bar clips.

Suitable for ceilings up to 1-1/2" thick in new construction only.

Precision-wound step-down transformer with class H insulation. For dimming control, use only dimmers specifically designed for use with magnetic (core and coil) transformers.

Two-pin porcelain socket attaches to lamp. Lamp clips to trim to ensure proper and consistent position.

Trims: 30° vertical tilt standard (except 3VS1 pinhole trim).

**Listings**

UL Listed to U.S. and Canadian standards.

**ORDERING INFORMATION**

For shortest lead times, configure products using **bolded options**.

**Example:** LIV3 3V01AZ 120

Series	Reflector	Voltage
LIV3	Choose reflector below. Housing and reflector may be ordered separately.	120

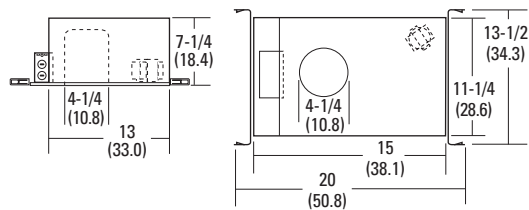
IC Rated Reflectors: All reflectors are damp location listed. Lamp types and maximum wattages listed for each reflector. These IC reflectors also can be used in Non-IC applications using lamps and wattages listed below. White flange standard.

Adjustable open cone		Adjustable baffle		Open eyeball		Baffle eyeball		Eyelid wallwash	
3V01AZ	Clear specular	3VB1	Black	3VE1	Open eyeball	3VE2	Black	3VW1	White
3V01GZ	Gold specular	3VB1W	White			3VE2W	White		
3V01BLZ	Black specular								
	IC 50MR16		IC 50MR16		IC 50MR16		IC 50MR16		IC 50MR16
Adjustable wallwash		Shielded slotted		Shielded pinhole					
3VDW1W	White	3VA5	White baffle	3VS1	White baffle				
	IC 50MR16		IC 50MR16		IC 50MR16				

**ADDITIONAL INFORMATION**

For additional product information, visit [www.lithonia.com](http://www.lithonia.com).

Drawings are for dimensional detail only and may not represent actual mechanical configuration. Dimensions are shown in inches (centimeters) unless otherwise noted.



# LP6



**Intended Use**  
Ideal for a wide variety of low- to medium-height ceiling applications including commercial, retail and hospitality spaces where open, baffled, wallwash and lensed reflectors are required.

**Construction**  
Rugged, galvanized steel frame-in with high-friction retention clips to secure optical system. Socket housing

attaches to reflector to ensure proper lamp positioning.

Factory-installed captive bar hangers that span up to 24" on center and feature built-in nailers and T-bar clips. Galvanized steel junction box with removable access door, four ROMEX® knockouts, two 3/4" and four 1/2" nominal conduit knockouts with pry-out slots. Positioned to allow straight conduit runs.

Remodeling capability; consult factory.

Maximum ceiling thickness 1/2".

**Electrical**  
Durable medium-base porcelain socket with nickel-plated copper alloy screw shell and contact. Integral thermal protector provides protection against improper use of insulation materials. Rated for #12 AWG conductor

through-branch wiring. Minimum 90°C supply wire. Ground wire provided.

**Listings**  
Fixtures are UL Listed for through-branch wiring, Non-IC recessed mounting, damp location, and to U.S. and Canadian safety standards.



Example: LP6 602A

**ORDERING INFORMATION**

Lead times will vary depending on options selected. Consult with your sales representative.

Series	Reflector	Options
LP6	Choose reflector below. Housing and reflector may be ordered separately. Lamp types and maximum wattages are listed for each reflector.	SDT 277V step-down transformer (277V to 120V) TRW White flange

Open reflector	Baffle with diffuse upper reflector	Baffle	Multiplier	Adjustable with baffle
602 White 602A Clear diffuse 602AZ Clear semi-specular 602G Gold diffuse 602GZ Gold semi-specular 602PR Pewter diffuse 602WTZ Wheat specular	6B3 Black baffle 6B3W White baffle <sup>1</sup>	6B4 Black baffle 6B4W White baffle	6M1AZ Clear semi-specular 6M1GZ Gold semi-specular 6M1BLZ Black specular	6AB1 Black baffle 6AB1W White baffle
Non-IC 75 PAR30 150 PAR38 100 A19 120 BR40 250 BR40 (heat lamp, 602 only)	Non-IC 100 PAR38 120 BR40 150 A21	Non-IC 100 PAR38 100 A19 120 BR40	Non-IC 150 A21 250 PAR38 120 BR40	Non-IC 65 BR30 75 PAR30
Adjustable with cone	Sloped baffle	Polycarbonate lens	Drop glass lens	Glass lens
6AC2AZ Clear semi-specular 6AC2GZ Gold semi-specular 6AC2BLZ Black specular	6SB1 Black baffle 6SB1W White baffle	6LD1 Drop, opal <sup>1,2</sup> 6LD2 Drop, prismatic <sup>1,2</sup> 6LF1 Flush, opal <sup>1,2</sup> 6LF2 Flush, prismatic <sup>1,2</sup>	6LD3 White splay, drop opal lens <sup>1,2</sup> 6LDB3 Black baffle, drop opal lens <sup>1,2</sup>	6LF3 White splay, white lens <sup>1,2</sup> 6LFB3 Black baffle, white lens <sup>1,2</sup> 6L4 White splay, fresnel lens <sup>1,2</sup> 6LB4 Black baffle, fresnel lens <sup>1,2</sup>
Non-IC 150 PAR38	Non-IC 65 BR30 100 A19 120 BR40 150 PAR38	Non-IC 60 A19	Non-IC 100 A19	Non-IC 100 A19

**ADDITIONAL INFORMATION**

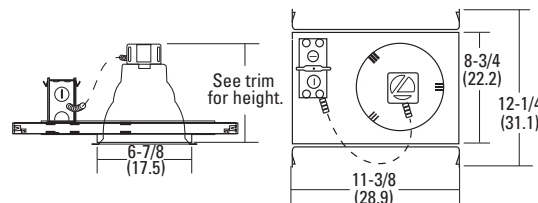
For additional product information, visit [www.lithonia.com](http://www.lithonia.com).

**ACCESSORIES**

**ORDER SEPARATELY**

CTE6	Ceiling trim extender
LCMB	Channel bar mounting brackets, set of two
LSMC	T-bar mounting clips, set of four

Drawings are for dimensional detail only and may not represent actual mechanical configuration. Dimensions are shown in inches (centimeters) unless otherwise noted.



**Notes**

- Lensed reflectors are wet location listed.
- White painted flange (TRW) standard.

**Intended Use**

Ideal for a wide variety of low- to medium-height ceiling applications including commercial, retail and hospitality spaces where open, baffled, wallwash and lensed reflectors are required.

**Construction**

Rugged, galvanized steel frame-in with high-friction retention clips to secure

optical system. Socket housing attaches to reflector to ensure proper lamp positioning.

Factory-installed captive bar hangers that span up to 24" on center and feature built-in nailers and T-bar clips. Galvanized steel junction box with removable access door, four ROMEX® knockouts, two 3/4" and four 1/2" nominal conduit knockouts with pry-

out slots. Positioned to allow straight conduit runs.

Remodeling capability; consult factory.

Maximum ceiling thickness 1/2".

**Electrical**

Electronic ballast with end of life protection standard. Class P thermally protected ballast that protects against improper contact with

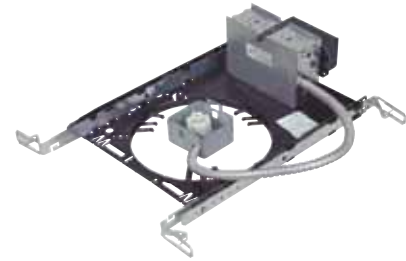
insulation. Minimum starting temperature is 0°F/-18°C. Rated for #12 AWG conductor through-branch wiring. Minimum 90°C supply wire. Ground wire provided.

**Listings**

Fixtures are UL Listed for through-branch wiring, Non-IC recessed mounting, damp location, and to U.S. and Canadian safety standards.

# LP6F

1-Lamp, Double Twin-Tube (DTT)  
1-Lamp, Triple-Tube (TRT)



**Example:** LP6F 26-42TRT 602A MVOLT

**ORDERING INFORMATION**

Lead times will vary depending on options selected. Consult with your sales representative.

Series	Lamp type	Reflector	Voltage	Options
LP6F	13DTT <sup>1</sup>	26-42TRT <sup>2</sup>	MVOLT <sup>3</sup>	ADEZ Advance® Mark X® electronic dimming ballast, 120V or 277V; minimum dimming level 5%
	18DTT	18TRT	120	DMHL LUTRON® Compact SE™ electronic dimming ballast, 120V or 277V; minimum dimming level 5%
	26DTT	26TRT	277	EL Emergency battery pack with integral test switch <sup>5</sup>
	13TRT <sup>1</sup>	32TRT	347 <sup>4</sup>	ELR Emergency battery pack with remote test switch <sup>5</sup>
	18DTT/TRT <sup>2</sup>	42TRT		BDP Ballast disconnect plug meets codes that require in-fixture disconnect
				GMF Single slow-blow fuse; specify voltage
				WLP 35K lamp (shipped separately)
				TRW White flange

Open reflector		Baffle with diffuse upper reflector		Baffle		Multiplier		Premium specular cone with diffuse upper reflector	
602	White	6B3	Black baffle <sup>6</sup>	6B4	Black baffle	6M1AZ	Clear semi-specular	6C3AZ	Clear semi-specular
602A	Clear diffuse	6B3W	White baffle <sup>6</sup>	6B4W	White baffle	6M1GZ	Gold semi-specular	6C3GZ	Gold semi-specular
602AZ	Clear semi-specular					6M1BLZ	Black specular	6C3BLZ	Black specular
602G	Gold diffuse								
602GZ	Gold semi-specular								
602PR	Pewter diffuse								
602WTZ	Wheat specular								

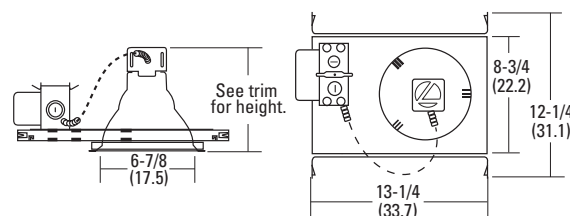
Sloped baffle		Wallwash		Polycarbonate lens		Drop glass lens		Glass lens	
6SB1	Black baffle	6W1	White	6LD1	Drop, opal <sup>6,7</sup>	6LD3	White splay, drop opal lens <sup>6,7</sup>	6LF3	White splay, white lens <sup>6,7</sup>
6SB1W	White baffle			6LD2	Drop, prismatic <sup>6,7</sup>	6LDB3	Black baffle, drop opal lens <sup>6,7</sup>	6LFB3	Black baffle, white lens <sup>6,7</sup>
				6LF1	Flush, opal <sup>6,7</sup>			6L4	White splay, fresnel lens <sup>6,7</sup>
				6LF2	Flush, prismatic <sup>6,7</sup>			6LB4	Black baffle, fresnel lens <sup>6,7</sup>

**ADDITIONAL INFORMATION**

For additional product information, visit [www.lithonia.com](http://www.lithonia.com).

ACCESSORIES ORDER SEPARATELY	
CTE6	Ceiling trim extender
LCMB	Channel bar mounting brackets, set of two
LSMC	T-bar mounting clips, set of four

Drawings are for dimensional detail only and may not represent actual mechanical configuration. Dimensions are shown in inches (centimeters) unless otherwise noted.



**Notes**

- 1 Not available with ADEZ or DMHL.
- 2 Not available with WLP.
- 3 Electronic multi-volt ballast capable of operating any line voltage from 120-277V, 50 or 60Hz.
- 4 Not available with EL or ELR.
- 5 Add 3" (7.6) to width and 4-1/2" (11.4) to length.
- 6 White painted flange (TRW) standard.
- 7 Lensed reflectors are wet location listed.

# LC6 MRI



**Intended Use**  
 Recessed housing rated Non-IC for new construction or remodel applications. Approved for all ceiling types except air-handling plenums. Suitable for installation in rooms containing magnetic resonance imaging equipment. No significant ferrous material contained in fixture.

**Construction**  
 Aluminum housing. Engineering-grade thermoplastic

frame and junction box with four built-in ROMEX® clamps; five 7/8" knockouts with slots for pryout. Rated for 90°C. Ground wire provided. Pre-assembled poke-home connectors for ease of wiring. Tilt-up captive J-box doors for easy access.

Trim retention (clips): Retaining clips riveted to top of reflector hold trim inside housing.

Trim retention (TOR): Two side-mounted torsion springs on the trim and two receiving brackets in the can, ensure a consistently tight fit with the ceiling.

Maximum ceiling thickness 1-1/2".

**Electrical**  
 Durable medium base porcelain socket with nickel-plated copper alloy screw shell and contact. Socket attaches to

reflector to ensure proper and consistent lamp position. Thermal protection provided against improper lamp usage. Suitable for use with 120V DC or AC.

**Listings**  
 U.L. Listed to U.S. and Canadian safety standards.

**ORDERING INFORMATION** For shortest lead times, configure products using **bolded options**.

**Example: LC6 MRI 601 TOR**

<b>Series</b>	<b>Reflector</b>
<b>LC6 MRI</b>	Choose reflector below. Torsion springs will be designated with a TOR in the nomenclature. Riveted clips will have no designation. Housing and reflector may be ordered separately.

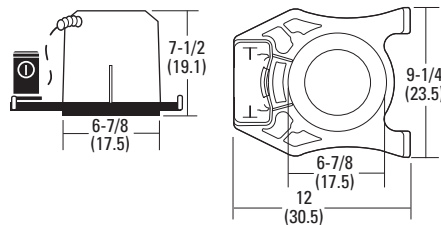
IC/Non-IC-Rated Full Reflectors: All reflectors are damp location listed. Lensed reflectors are wet location listed. Lamp types and maximum wattage are listed for each reflector.

Open wide flange	Open narrow flange	Baffle wide flange	Baffle narrow flange	Baffle narrow flange
<b>601</b> White 601 TOR White  IC 65 BR30 75 PAR30	702 TOR White <sup>1</sup> 702A Clear diffuse 702AZ Clear specular 702BLZ Black specular  IC 65 BR30 75 PAR30	6B1 Black 6B1 TOR Black 6B1W TOR White  IC 40 A19 65 BR30 75 PAR30	6B2 Black 6B2W White  IC 65 BR30 75 PAR30/38	6B4 Black 6B4W White  Non-IC 100 A19 120 BR40 150 PAR38
Baffle narrow flange	Eyeball	Wallwash	Polycarbonate lens	Polycarbonate lens
7B2 TOR Black 7B2W TOR White  IC 65 BR30 75 PAR30	Must be ordered with TOR option 7E1 TOR White  IC 65 BR30 75 PAR30	Must be ordered with TOR option 7W1 White  Non-IC 60 A19	6LD1 Drop opal <sup>1</sup> 6LD2 Drop prismatic <sup>1</sup> 6LF1 Flush opal <sup>1</sup> 6LF2 Flush prismatic <sup>1</sup>  Non-IC 60 A19	7LD1 Drop opal 7LD2 PF Drop opal, plastic flange  IC 40 A19

**ADDITIONAL INFORMATION** For additional product information, visit [www.lithonia.com](http://www.lithonia.com).

ACCESSORIES	
ORDER SEPARATELY	
CTR6	6" goof ring, white

Drawings are for dimensional detail only and may not represent actual mechanical configuration. Dimensions are shown in inches (centimeters) unless otherwise noted.



**Notes**

<sup>1</sup> For plastic flange, add suffix PF to catalog number (Example: 6LD1 PF).

**PRODUCT INFORMATION**

**Intended Use**

Recessed housing rated IC for new construction or remodel applications. Approved for all ceiling types except air-handling plenums. Suitable for installation in rooms containing magnetic resonance imaging equipment. No significant ferrous material contained in fixture.

**Construction**

Aluminum housing, Engi-

neering grade thermoplastic frame and junction box with four built-in ROMEX® clamps; five 7/8" knockouts with slots for pryout. Rated for 90°C. Ground wire provided. Pre-assembled poke-home connectors for ease of wiring. Tilt-up captive J-box doors for easy access.

Trim retention (clips): Retaining clips riveted to top of reflector hold trim inside housing.

Trim retention (TOR option): Two side-mounted torsion springs on the trim and two receiving brackets in the can, ensure a consistently tight fit with the ceiling.

Maximum ceiling thickness 1-1/2".

**Electrical**

Durable medium base porcelain socket with nickel-plated copper alloy screw shell and contact. Socket attaches to reflector to ensure

proper and consistent lamp position. Thermal protection provided against improper lamp usage. Suitable for use with 120V DC or AC.

**Listings**

U.L. Listed to U.S. and Canadian safety standards.

# LCP MRI



**ORDERING INFORMATION**

For shortest lead times, configure products using **bolded options**.

**Example: LCP MRI C01 TOR**

Series	Reflector
<b>LCP MRI</b>	Choose reflector below. Torsion springs will be designated with a TOR in the nomenclature. Riveted clips will have no designation. Housing and reflector may be ordered separately.

IC-Rated Full Reflectors: All reflector are damp location listed. Lensed reflectors are wet location listed. These IC trims also can be used in Non-IC applications when using the lamps and wattages listed below. White flange standard, except as noted.

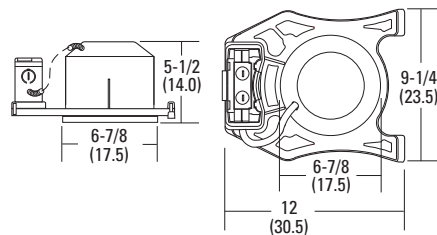
Open wide flange		Open narrow flange		Open wide flange		Baffle wide flange		Baffle narrow flange	
<b>C01</b>	White	<b>CO2</b>	White	<b>701 TOR</b>	White	<b>CB1</b>	Black	<b>7B0W</b>	White
<b>C01 TOR</b>	White	<b>CO2A</b>	Clear diffuse <sup>1</sup>			<b>CB1 TOR</b>	Black		
		<b>CO2AZ</b>	Clear specular <sup>1</sup>			<b>CB1W</b>	White		
						<b>CB1W TOR</b>	White		
	IC 60 A19 65 BR30 75 PAR30		IC 60 A19 65 BR30 75 PAR30		IC 65 BR30 75 PAR30		IC 40 A19 65 BR30 75 PAR30		IC 65 BR30 75 PAR30
Eyeball narrow flange		Eyeball wide flange		Polycarbonate lens		Polycarbonate lens			
<b>CE1</b>	White	<b>7E1 TOR</b>	White	<b>CLD1</b>	Drop opal <sup>2</sup>	<b>7LD1</b>	Drop opal		
						<b>7LD2 PF</b>	Drop opal, plastic flange		
	IC 65 BR30 75 PAR30		IC 65 BR30 75 PAR30		IC 40 A19		IC 40 A19		

**ADDITIONAL INFORMATION**

For additional product information, visit [www.lithonia.com](http://www.lithonia.com).

ACCESSORIES	
ORDER SEPARATELY	
<b>CTR6</b>	6" goof ring, white

Drawings are for dimensional detail only and may not represent actual mechanical configuration. Dimensions are shown in inches (centimeters) unless otherwise noted.



**Notes**

- Flange matches trim finish.
- For plastic flange, add suffix PF to catalog number (Example: CLD1 PF).

# WSL1F

Wet Location



**Intended Use**  
Rated Non-IC for new construction in indoor applications or outdoor wet locations, such as courtyards and pathways.

**Construction**  
Mechanical: Aluminum die-cast, white powder coat paint, corrosion-resistant

housing. Louvered, slotted, and open faceplates available. Die-cast powder coat painted faceplates are available in white or black finish. Faceplates are shipped separately.

**Electrical**  
13DTTE, instant-start electronic ballast standard

(120V or 277V). One electrical conduit fitting and one plug provided. Electrical conduit fitting for wet location in wood construction, masonry and poured concrete applications.

**Listings**  
UL Listed to U.S. and Canadian safety standards.

**ORDERING INFORMATION**

For shortest lead times, configure products using **bolded options**.

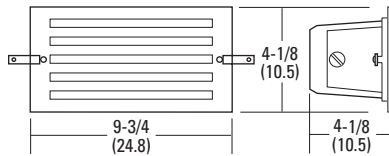
**Example: WSL1F 13DTTE FPLBL 120**

Series	Lamp type	Finish	Voltage
<b>WSL1F</b>	<b>13DTTE</b>	FPL White louvered faceplate	<b>120</b>
		<b>FPLBL</b> Black louvered faceplate	
		FPS White slotted faceplate	<b>277</b>
		FPSBL Black slotted faceplate	
		FPO White, opal lens	
		FPOBL Black, opal lens	

**ADDITIONAL INFORMATION**

For additional product information, visit [www.lithonia.com](http://www.lithonia.com).

Drawings are for dimensional detail only and may not represent actual mechanical configuration. Dimensions are shown in inches (centimeters) unless otherwise noted.



PRODUCT INFORMATION

# STEPLIGHTS

Damp Location



**Intended Use**  
Rated IC or Non-IC. For new construction only. To direct light on steps or pathways. Wall or step riser mounting.

**Construction**  
Approved for through-branch circuit wiring. Galvanized steel housing and wiring compartment with a ground

wire. Bar hangers span 16" with recessed integral nailer tabs. Powder-coated steel louver available in white or black finish. Butterfly springs hold louver securely in place. Die-cut foam gasket seals steel louver against surface, preventing light leaks.

**Electrical**  
Encased and potted NPF (normal power factor) 120V electromagnetic ballast. Durable two-pin positive latch thermoplastic socket. 13W DTT. Thermally protected.

**Listings**  
UL Listed to U.S. and Canadian safety standards.



**ORDERING INFORMATION**

For shortest lead times, configure products using **bolded options**.

**Example: SL1F 13DTT BL**

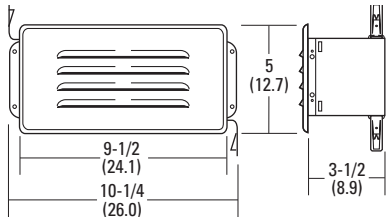
Series	Lamp type	Finish
Incandescent	Incandescent <sup>1</sup>	(blank) White
SL1	(blank) Incandescent	<b>BL</b> Black
Fluorescent	Fluorescent	
<b>SL1F</b>	<b>13DTT</b>	

**ADDITIONAL INFORMATION**

For additional product information, visit [www.lithonia.com](http://www.lithonia.com).

IC/NON-IC RATED - THESE STEPLIGHTS ARE DAMP LOCATION LISTED. MAXIMUM WATTAGE AND LAMPS ARE LISTED.	
INCANDESCENT	FLUORESCENT
25 A19 (IC)	13DTT (IC)
40 A19 (Non-IC)	

Drawings are for dimensional detail only and may not represent actual mechanical configuration. Dimensions are shown in inches (centimeters) unless otherwise noted.



**Notes**

<sup>1</sup> Leave lamp type information blank.

Because Lithonia Lighting downlighting housings and trims are packaged and shipped as separate components, they usually are ordered as separate line items. However, housing and trim descriptions also may be combined on a single line item for ordering.

**Example:** L5 housing with 5B2 trim may be ordered as L5 and 5B2 or as L5 5B2.

**Regardless of ordering method, components will be shipped in optimized packaging.**

"R" followed by a number indicates a resale pack of that number of items per shipping carton. Resale-packed items are UPC-labeled and packaged appropriately for individual resale, but not for reshipment. Resale pack configurations (if available)

with unit packs are used to fill odd lot quantities. To override packaging optimization, items may be ordered with the "U" (unit) packaging suffix. Specifying unit packaging or ordering quantities that are not even-numbered multiples of available resale configurations may result in higher pricing.

# PACKAGING

ORDERED AS SEPARATE LINE ITEMS		
LINE	QUANTITY	CATALOG NUMBER
1	12	L5 R6
2	12	5B2 R12
3	3	LV3
4	3	3VB1

OR

ORDERED AS ONE LINE ITEM		
LINE	QUANTITY	CATALOG NUMBER
1	12	L5 5B2
2	3	LV3 3VB1

SHIPS AS:

SHIP AS			
LINE	QUANTITY	CATALOG NUMBER	DESCRIPTION
1	12	L5 R6	2 resale cartons, each containing 6 housings
3	12	5B2 R12	1 resale carton, each containing 12 trims
5	3	LV3	3 unit cartons, each containing 1 housing
6	3	3VB1	3 unit cartons, each containing 1 trim