
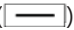


LAMP CONTROL MODULE INSTALLATION GUIDE

Read and understand instructions completely before starting.

	<p>ELECTRICAL SHOCK HAZARD</p> <p>High Voltage. This device must be installed by a qualified installer or electrician. Follow all applicable electrical codes for installation.</p>
----------------------------------------------------------------------------------	--------------------------------------------------------------------------------------------------------------------------------------------------------------------------------------------

1. Turn the electrical load on (for example, a lamp) and unplug the cord from the wall outlet.
2. Plug the cord of the electrical load, for example a lamp, into the outlet cord of the module.
3. Plug the module into a standard wall outlet.
4. Test the connection by actuating the load using the Set button () on the module

NOTE: The plug and outlet are polarized, and not intended to be mated with non-polarized devices.

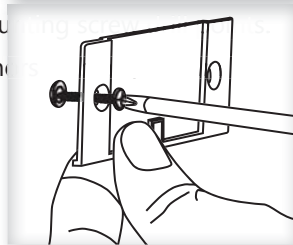
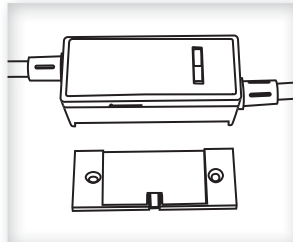
Optional Mounting

The Plug-In Switch Module provides a fixed mounting option to prevent damage and theft. Using the included mounting plate, mount the device high enough off the floor to avoid spills and impact with cleaning equipment.

1. Using a level and a pencil, lightly mark two small dots to align the upper edge of the module on the wall where you want to mount it.

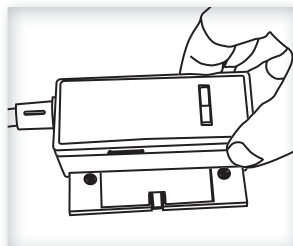
TIP: For easy housekeeping, provide sufficient clearance for vacuum cleaners.

2. Slide the mounting plate off the back of the module.
3. With the tab lock side down, mount the plate securely to the wall.
 - A. Using the pencil marks to ensure it's level, mark the two mounting spots.
 - B. Drill two holes for the wall anchors and insert the wall anchors.
 - C. Insert the first screw loosely and level the module.
 - D. Insert the second screw, and then hand tighten the first screw.








4. Slide module onto the mounting plate until it clicks in place.

NOTE: Any EnOcean-based switch can be linked to the module.



Blink Legend

	The Menu LED or Set LED display solid for a number of seconds in a certain color to indicate a mode or a confirmation.
	The Menu LED blinks a number of times in a color to indicate a selected menu.
	The Set LED blinks a number of times in a color to indicate an option.
	A number in a white box indicates the number of times to click the Menu button or Set button.
	A number in a black box indicates the number of seconds to hold down the Menu button or Set button.

To link a transmitter to a transceiver

1. Access Basic Setup mode.    

NOTE: By default, the Accept Link option in the Linking menu is selected. Once activated, this option stays active for two minutes to provide time to link multiple devices.

Ready to accept links.    

2. For the transmitter to be linked, do one of the following according to the type of device:
 - A. Sensor: click the designated link button.
 - B. Key Card Switch: insert/remove the card 3 times quickly.
 - C. Rocker Pad: click the top button 3 times quickly.

Device linked successfully.    

Set LED displays solid green for 3 seconds.

Ready to accept new links.    

3. To exit mode and return to normal operation, press and hold both buttons for 2 seconds.

To unlink a device

Follow the same steps as described in the "To link..." section above with the following deviations:

- After step 1 in the "To link..." section above, click the "Set" (right) button 3 times to enable the "Remove Link" option.

Ready to remove links.    

- Follow the same instructions as shown in Step 2 of the "To link..." section. The Set (right) LED will turn red briefly to indicate the link was successfully removed.

To restore factory defaults

Follow these steps to clear all linked devices and restore the Plug-in Switch Module to its factory default settings.

1. Press and hold both buttons for 15 seconds
>> Hold buttons until the Menu (left) LED is solid RED and the Set (right) LED is solid Amber (Both LEDs will turn various colors as the module cycles through the resetting process).
2. Press and hold the Set (right) button for 3 seconds to confirm factory reset.
3. Device will reboot and initiate start up LED sequence.