



HIGHLIGHTS

- Made from ultra-thin OLED technology for the next generation
- Emits a natural soft pure light that is glare-free and cool to the touch
- OLED direct /indirect illumination available in 90+ CRI in 3000K and 4000K



eidoLED

SPECIFICATIONS

Construction

OLED panels encased in a solid aluminum housing. OLED panels held in place by 0.035" thick lip and solid or windowed back cover plate. Mounting hardware with no exposed fasteners. Class II wiring.

Mounting

Two-fastener mounting of module with stem(s) to ceiling. Canopy is mounted to a 4" octagonal or full-size round junction box (supplied by others). Includes swivel pendant mechanism allowing for up to 45° sway from vertical.

Source

1 or 2 OLED Panels. Aedan Pendant Mount is available in 2 styles: 1-panel Down or 1-panel Up / 1-panel Down. 3000K or 4000K.

Finish

Standard colors for housing are painted aluminum, white or black.

Electrical

Remote EidoLED 0-10V dimming driver.

Environment

Ambient operating temperature between 0° C to 40° C.

Validation

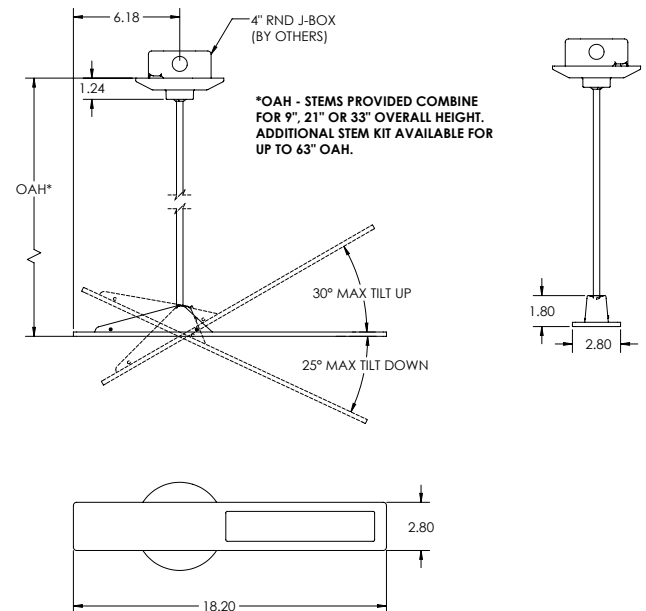
UL/cUL listed for dry locations.

Warranty

3-year limited warranty. Complete warranty terms located at www.acuitybrands.com/support/customer-support/terms-and-conditions

Note: Actual performance may differ as a result of end-user environment and application. All values are design or typical values, measured under laboratory conditions at 25 °C.

DIMENSIONS



ORDERING INFORMATION Example: CALS AEDAN PM 1P O30K MO MVOLT ZT C110

Series	Form	Configuration	OLED Color Temperature	OLED Output
CALS AEDAN	PM ¹ Pendant Mount	1P 1 Panel 2P 2 Panel	O30K 3000K O40K 4000K <i>Note: OLED available in 90+ CRI only</i>	MO Maximum Output ML Maximum Lifetime
Voltage	Control Input	Option	Finish	
MVOLT 120-277 VAC	ZT 0-10V Dimming	STMK STEM KIT (Adds 2 x 12" Stems & 1 x 6" Stem)	C110 Painted Aluminum (low gloss) C041 White (fine textured) C201 Black (fine textured) C099 Custom color	

NOTES

¹ Includes a total of (2) 12" stems and (1) 6" stem. Pieces join together for a continuous stem length of up to 30"

PHOTOMETRIC PERFORMANCE (ESTIMATED)

Nominal Luminaire Performance at Maximum Output (MO)

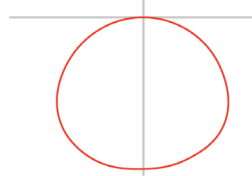
	1P		2P	
	3000K	4000K	3000K	4000K
Luminance (cd/m²)	8500	7000	8500	7000
Lumens	254	200	508	400
Watts	4.56	4.7	8.6	8.9
Efficacy (lm/W)	55	42	59	45
L70 lifetime (hrs)	30,000	30,000	30,000	30,000

Nominal Luminaire Performance at Maximum Lifetime (ML)

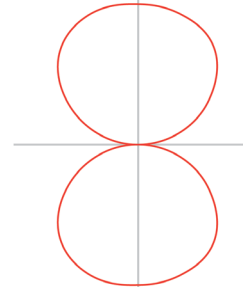
	1P		2P	
	3000K	4000K	3000K	4000K
Luminance (cd/m²)	3000	3000	3000	3000
Lumens	95	95	190	190
Watts	1.6	2.2	3.2	4.4
Efficacy (lm/W)	59	43	59	43
L70 lifetime (hrs)	100,000	100,000	100,000	100,000

DISTRIBUTION

1P 100% Down



2P 50% Up | 50% Down



CUSTOMIZATION

Ask Winona about the following possibilities: additional mounting options, custom colors and other modifications.

