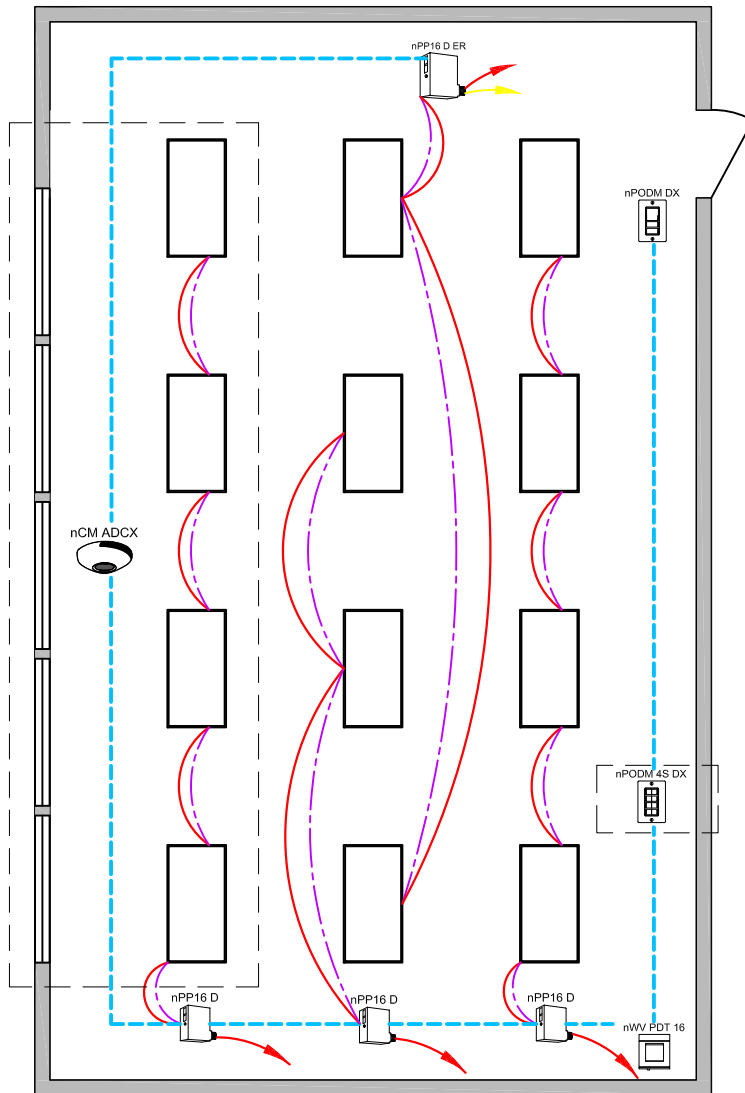


CA TITLE 24 2013 DESIGN GUIDE

CLASSROOM WITH EMERGENCY & 0-10V DIMMING FIXTURES



SEQUENCE OF OPERATION:

LIGHTS

- ALL LIGHTS ARE DIMMABLE
- EACH ROW CONTROLLED INDEPENDENTLY
- MAXIMUM LEVEL CAN BE LIMITED TO 80%

OCCUPANCY

- LIGHTS MUST BE TURNED ON MANUALLY
- LIGHTS AUTOMATICALLY TURN OFF WHEN ROOM BECOMES VACANT

DAYLIGHT

- PROVIDES UP TO THREE DAYLIGHT ZONES, EACH CONTROLLED INDEPENDENTLY

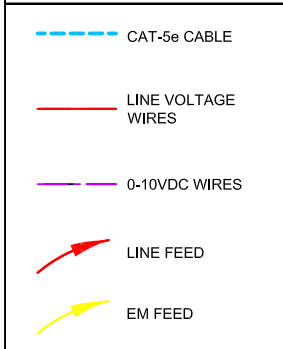
MANUAL

- MASTER ON/OFF & RAISE/LOWER CONTROL OF ENTIRE ROOM
- OPTIONAL 4 SCENE CONTROL

ADDITIONAL OPTIONS:

- SURFACE OR RECESSED MOUNT SENSORS ALSO AVAILABLE
- ADD ADDITIONAL RELAY PACK (MODEL NPP16 D) IF A WHITE BOARD LIGHTING ZONE ALSO REQUIRED
- ADD GRAPHIC WALLPOD (MODEL NPODM GFX) FOR INDIVIDUAL ROW AND UP TO 16 SCENE CONTROL
- ROOM CAN BE CONNECTED TO NLIGHT BACKBONE TO ENABLE NET-WORK CONTROL OR ADR (AUTOMATIC DEMAND RESPONSE)

DIAGRAM LEGEND



BILL OF MATERIAL

QTY	PRODUCT #	DESCRIPTION
3	nPP16 D	RELAY MODULE WITH 0-10V DIMMING OUTPUT
1	nPP16 D ER	EMERGENCY RELAY MODULE WITH 0-10V DIMMING OUTPUT
1	nPODM DX	ON/OFF & RAISE/LOWER WALL POD
1	nWV PDT 16	DUAL TECHNOLOGY WIDE VIEW OCCUPANCY SENSOR

OPTIONS

1	nPODM 4S DX	TEACHER STATION - 4 SCENE MASTER ON/OFF RAISE/LOWER
1	nCM ADCX	AUTOMATIC DIMMING CONTROL PHOTOCELL

SUPPORTS THE FOLLOWING REQUIREMENTS:

FULL AUTO-OFF VIA OCCUPANCY SENSOR (SECTION 130.1c)

LOCAL SWITCH (SECTION 130.1a)

MULTI-LEVEL/ DIMMING CONTROL (SECTION 130.1b)

AUTOMATIC DEMAND RESPONSE (ADR) READY (SECTION 130.1e)

MULTI-LEVEL DAYLIGHT CONTROL (SECTION 130.1d)