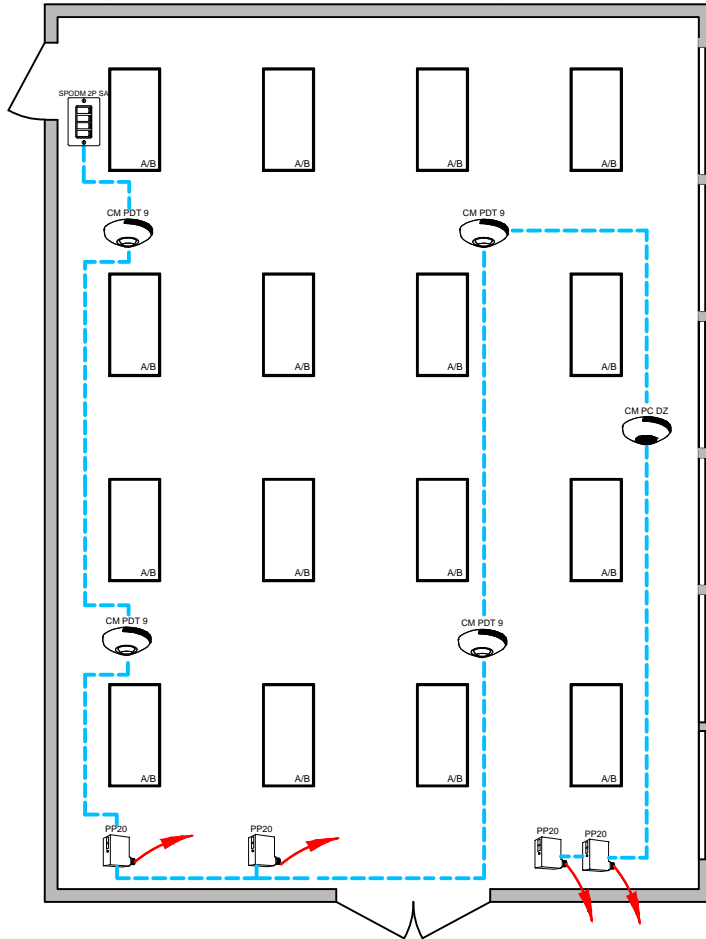


IECC 2015 DESIGN GUIDE

OPEN OFFICE WITH A/B SWITCHING AND DAYLIGHT HARVESTING



SENSOR SWITCH



SEQUENCE OF OPERATION:

LIGHTS

- ALL LIGHTS ARE SWITCHING
- EACH LOAD CONTROLLED INDEPENDENTLY

OCCUPANCY

- LIGHTS MUST BE TURNED ON MANUALLY
- LIGHTS AUTOMATICALLY TURN OFF WHEN ROOM BECOMES VACANT

DAYLIGHT

- 100%, 50% AND OFF
- DAYLIGHT ZONES DEFINED BY ROWS

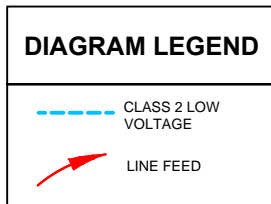
MANUAL

- MASTER ON/OFF 2 POLE SWITCH

ADDITIONAL OPTIONS:

- SURFACE OR RECESSED MOUNT SENSORS ALSO AVAILABLE
- FOR EMERGENCY LIGHTING CONTROL ADD A PP16 SHUNT PACK

*LINE VOLTAGE WIRES NOT SHOWN.



BILL OF MATERIAL		
QTY	PRODUCT #	DESCRIPTION
4	PP20	RELAY MODULE
1	SPODM 2P 2SA	2 POLE MANUAL ON WALL POD
4	CM PDT 9	DUAL TECHNOLOGY OCCUPANCY SENSOR
1	CM PC DZ	DUAL ZONE ON/OFF CONTROL PHOTOCELL

SUPPORTS THE FOLLOWING REQUIREMENTS:

✓ FULL AUTO-OFF VIA OCCUPANCY SENSOR (C405.2.1.1)

✓ LOCAL SWITCH (C405.2.2.3)

✓ LIGHTING REDUCTION (C405.2.2.2)

✓ SIDELIGHT DAYLIGHT ZONE (C405.2.3.2)