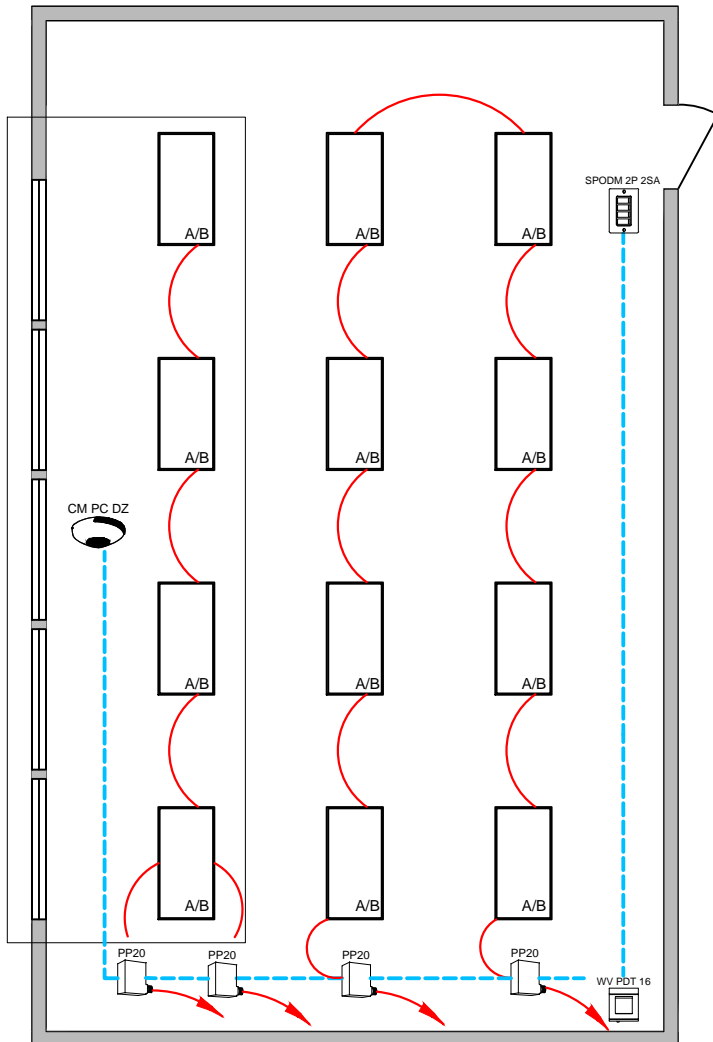


IECC 2015 DESIGN GUIDE
 CLASSROOM WITH ON/OFF DAY LIGHTING CONTROLS



SEQUENCE OF OPERATION:

LIGHTS

- ALL LIGHTS ARE SWITCHING (A/B)
- EACH LOAD CAN BE CONTROLLED INDEPENDENTLY

OCCUPANCY

- LIGHTS MUST BE TURNED ON MANUALLY
- LIGHTS AUTOMATICALLY TURN OFF WHEN ROOM BECOMES VACANT

DAYLIGHT

- PROVIDES THREE LEVELS OF LIGHT 100%, 50%, OFF
- NOT REQUIRED FOR AREAS WITHOUT WINDOWS OR THAT HAVE LOADS <150W IN SIDELIGHT ZONES

MANUAL

- MASTER ON/OFF OF EACH LOAD

ADDITIONAL OPTIONS:

- SURFACE OR RECESSED MOUNT SENSORS ALSO AVAILABLE
- ADD ADDITIONAL RELAY PACK (MODEL PP20 & SPODM) IF A WHITE BOARD LIGHTING ZONE ALSO REQUIRED
- FOR EMERGENCY LIGHTING CONTROL ADD A PP16 SHUNT PACK.

DIAGRAM LEGEND	
	CLASS 2 LOW VOLTAGE
	LINE VOLTAGE WIRES
	LINE FEED

BILL OF MATERIAL		
QTY	PRODUCT #	DESCRIPTION
4	PP20	RELAY MODULE
1	SPODM 2P 2SA	2 POLE MANUAL ON WALL POD
1	WV PDT 16	DUAL TECHNOLOGY WIDE VIEW OCCUPANCY SENSOR
OPTIONS		
1	CM PC DZ	ON/OFF PHOTOCELL

SUPPORTS THE FOLLOWING REQUIREMENTS:

- FULL AUTO-OFF VIA OCCUPANCY SENSOR (C405.2.1.1)
- LOCAL SWITCH (C405.2.2.3)
- LIGHTING REDUCTION (C405.2.2.2)
- SIDELIGHT DAYLIGHT ZONE (C405.2.3.2)