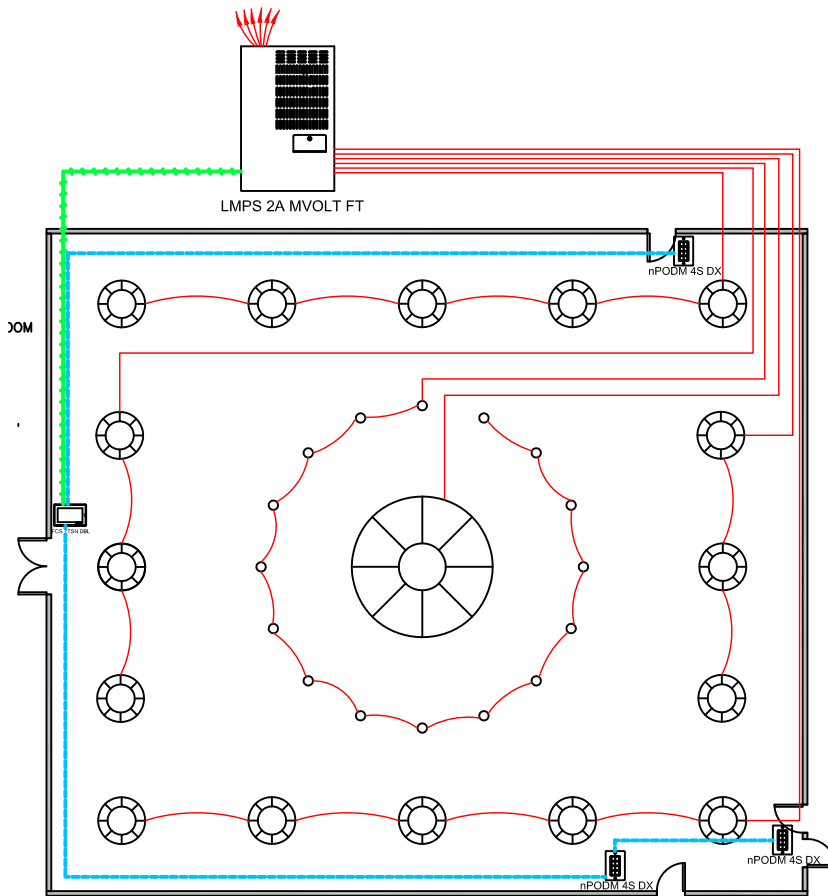


ASHRAE DESIGN GUIDE 90.1-2010 BALLROOM WITH FRESCO/LMP PANEL



SEQUENCE OF OPERATION:

LIGHTS

- ALL LIGHTS ARE DIMMABLE
- EACH ROW CONTROLLED INDEPENDENTLY
- MAXIMUM LEVEL CAN BE LIMITED TO 80%
- OPTIONAL AUTOMATIC LUMEN MAINTENANCE

OCCUPANCY

- LIGHTS AUTOMATICALLY TURN ON WHEN OCCUPANT ENTERS THE SPACE (OPTIONALLY CAN BE CONFIGURED TO 50% AUTO-ON)
- LIGHTS AUTOMATICALLY TURN OFF WHEN ROOM BECOMES VACANT

MANUAL

- MASTER ON/OFF & RAISE/LOWER CONTROL OF ENTIRE ROOM

ADDITIONAL OPTIONS:

- SURFACE OR RECESSED MOUNT SENSORS

* NOTE: DESIGN ASSUMES FIXTURES CONNECTED TO THE LMP PANEL ARE 0-10V DIMMING.

DIAGRAM LEGEND

	CAT-5e CABLE
	LINE VOLTAGE WIRES
	0-10VDC WIRES
	LINE FEED
	CLASS II LOW VOLTAGE
	A4 CABLE

BILL OF MATERIAL

QTY	PRODUCT #	DESCRIPTION
1	FCS 7TSN	FRESKO ARCHITECTURAL LIGHTING SCENE CONTROL TOUSCREEN
1	LMPs 2A 1L MVOLT FT	LMP LIGHTING MANAGEMENT MODULAR DIMMING AND RELAY PANEL
3	nPODM 4S DX	4 SCENE CONTROL MASTER ON/OFF RAISE/LOWER

SUPPORTS THE FOLLOWING REQUIREMENTS:

- FULL/PARTIAL AUTO ON-OFF VIA OCCUPANCY SENSOR
- LOCAL SWITCH
- MULTI-LEVEL/ DIMMING CONTROL