



# You need solutions FAST. We are LightQuick®.

Project schedules are demanding. You need a partner you can trust. Count on Acuity Brands® to deliver the product you need — when, where and how you need it.



**LIGHTQUICK®**  
DELIVERING ON-TIME SOLUTIONS

## Our Solutions

**Two Regional Manufacturing Centers and five Distribution Centers** - Service stock and manufacture made-to-order products that are tailored to the needs of their local markets.

**Local Stock** - Over **7,000** products in-stock and available to ship same-day when orders are received by noon local time.

**Local Made-to-Order** - Over **100,000** configurable products ship in **2 days or less\***.

**Local Support** - On-site customer care team to support your unique needs.

**Local Manufacturing and Logistic Solutions** - In-house fabrication, paint capabilities, plus much more. See reverse side for details.

Visit [www.acuitydistributorcenter.com](http://www.acuitydistributorcenter.com) today to view LightQuick inventory availability and configure made-to-order-products! To find out which products can be configured at your local RMDC, visit [www.acuitybrands.com/lightquick](http://www.acuitybrands.com/lightquick).

\*Quantities limited to 100 per SKU.



# No two projects are alike.



The LightQuick® Made-to-Order program from Acuity Brands offers tailored assembling and logistic capabilities to meet your specific needs.



**Custom Fabrication** to meet your specific opportunity needs.



**Infinite Powder Paint Options** to transform your product's finish.



**Special Markings** to assist with job site logistics and coordination.



**Custom Pallet Sizes** to meet your unique job site requirements.



**Local Delivery Trucks** to bring you products when you need them 24/7.

## Need a customized product or solution?

Contact your local customer care team to develop a strategy for your business opportunity as well as support you throughout the ordering and fulfillment process.

Not all services available at all Regional Manufacturing and Distribution Centers (RMDC). Please contact your local RMDC for details.

# COMING SOON

## Commercial Indoor

---



**CSS** LED Strip Light

## Downlighting

---



**LBR4** 4" Retrofit



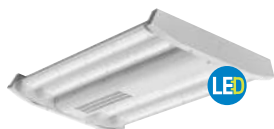
**LBR6** 6" Retrofit



**LBR8** 8" Retrofit

## Industrial

---



**IBG** I-BEAM<sup>®</sup> LED High Bay



**IBGN** I-BEAM<sup>®</sup> LED High Bay

Unless otherwise stated, all products are  **LITHONIA LIGHTING**<sup>®</sup>





# Western Region Made-to-Order Series



## Commercial Indoor



**2AVL2** LED Direct/Indirect  
**2AVL4** Max order QTY 150 PCS



**2GTL** LED Recessed Troffer  
Max order QTY 150 PCS



**2VTL2** LED Volumetric  
**2VTL4** Troffer  
Max order QTY 150 PCS

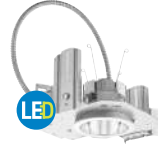


**2BLT2** LED Volumetric  
**2BLT4** Troffer  
Max order QTY 150 PCS

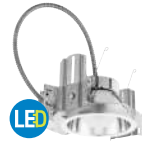


**STAK** Center Element  
Lay-In Troffer  
Max order QTY 100 PCS

## Downlighting



**LDN4** 4" LED Downlight  
Max order QTY 100 PCS



**LDN6** 6" LED Downlight  
Max order QTY 100 PCS

## Components



**OC2**



## Industrial



**CPHB** LED High Bay  
Max order QTY 75 PCS

Unless otherwise stated, all products are LITHONIA LIGHTING

**Table of Contents**

<b>Category</b>	<b>Description</b>	<b>Page</b>
<b>Commercial Indoor</b>		
LED Direct/Indirect	2AVL2, 2AVL4	6-7
LED Recessed Troffer	2GTL	8-9
LED Volumetric Troffer	2VTL2, 2VTL4	10
	2BLT2, 2BLT4	11
LED Center Element Lay-In Troffer	STAK	12
<b>Industrial</b>		
LED High Bay	CPHB	13
<b>Downlighting</b>		
LED Downlighting	LDN4, LDN6	14-15
<b>Component</b>		
Opening Ceiling Lighting System	OC2	16

The made-to-order products within this catalog have a two-day shipment lead-time from order entry for quantities of 100 or less. For any option not included within the following pages, please contact your customer care representative to confirm availability and lead times.

# Western Region Made-to-Order Series



**AVANTE®, 2AVL2**  
2' x 2' LED Direct/Indirect

**ORDERING INFORMATION**

Specifications subject to change.

**Example: 2AVL2 30L MDR EZ1 LP835 N100**

Series	Trim Type	Air Function	Lumens <sup>1</sup>	Diffuser	Voltage	Driver	
2AVL2 AV LED	(blank) Grid Trim ST Screw Slot	(blank) Static (no air function)	<b>Standard Efficiency</b>		MDR Metal Diffuser, round holes ADP Acrylic diffuser, linear prismatic lens	(blank) MVOLT (120V-277V)	GZ1 Dims to 1% (0-10V dimming) <sup>2</sup> GZ10 Dims to 10% (0-10V dimming) <sup>2</sup>
			20LSE	2000 Lumens			
			30LSE	3000 Lumens			
			40LSE	4000 Lumens			
			<b>High Efficiency</b>				
			20LHE	2000 Lumens			
30LHE	3000 Lumens						
			40LHE	4000 Lumens			

Color Temperature	Options
LP830 3000K	EL14L 1400 Lumen battery pack <sup>1</sup>
LP835 3500K	E10WLCP EM Self-diagnostic battery pack, 10W Constant Power, CEC compliant
LP840 4000K	PWS1836 6' prewire, 3/8" diameter, 18-gauge, 1 circuit
	PWS1846 6' prewire, 3/8" diameter, 18-gauge, 2 circuit
	PWS1856LV
	USPOM United States Point of Manufacture <sup>3</sup>

**Notes**

- 1 Approximate lumen output.
- 2 GZ1, GZ10 not available with any Controls options
- 3 Use when mill certifications are required.

# Western Region Made-to-Order Series



**AVANTE®, 2AVL4**  
 2' x 4' LED Direct/Indirect

### ORDERING INFORMATION

Specifications subject to change.

**Example: 2AVL4 40L MDR EZ1 LP835**

Series	Trim Type	Air Function	Lumens <sup>1</sup>	Diffuser	Voltage	Driver	
2AVL4 AV LED	(blank) Grid Trim ST Screw Slot	(blank) Static (no air function)	<b>Standard Efficiency</b>		MDR Metal Diffuser, round holes ADP Acrylic diffuser, linear prismatic lens	(blank) MVOLT (120V-277V)	GZ1 Dims to 1% (0-10V dimming) <sup>2</sup> GZ10 Dims to 10% (0-10V dimming) <sup>2</sup>
			30LSE	3000 Lumens			
			40LSE	4000 Lumens			
			50LSE	5000 Lumens			
			<b>High Efficiency</b>				
			30LHE	3000 Lumens			
40LHE	4000 Lumens						
50LHE	5000 Lumens						

Color Temperature	Options
LP835 3500K	EL14L 1400 Lumen battery pack <sup>3</sup>
LP840 4000K	E10WLCP EM Self-diagnostic battery pack, 10W Constant Power, CEC compliant
	PWS1836 6' prewire, 3/8" diameter, 18-gauge, 1 circuit
	PWS1846 6' prewire, 3/8" diameter, 18-gauge, 2 circuit
	PWS1856LV 6' pre-wire, 3/8" diameter, 18 gauge, 1 circuit w/low voltage purple and gray wires
	USPOM United States Point of Manufacture <sup>3</sup>

### Notes

- 1 Approximate lumen output.
- 2 GZ1, GZ10 not available with any Controls options
- 3 Use when mill certifications are required.

# Western Region Made-to-Order Series



**GTL Series, 2GTL**  
 2' x 2' LED Recessed Troffer

### ORDERING INFORMATION

Specifications subject to change.

**Example:** 2GTL 2 F 20L LP840 N80 PWS1836

Series	Length	Trim Type	Lumens <sup>1</sup>	Door	Lens	Voltage	Driver
2GTL 2' wide recessed LED luminaire	2' 2'	(blank) Grid	20L 2000 Lumens 33L 3300 Lumens 40L 4000 Lumens 48L 4800 Lumens	(blank) Flush steel, white	(blank) #12 pattern acrylic, 0.125" thick A19 #19 pattern acrylic, 0.156" thick SWL Satin White	(blank) MVOLT 120-277V	GZ1 Dims to 1% (0-10V dimming) GZ10 Dims to 10% (0-10V dimming)

Color Temperature	Options
LP835 3500K	EL14L Emergency Battery Pack (1400 Lumens) <sup>3</sup>
LP840 4000K	E10WLCP EM Self-diagnostic battery pack, 10W Constant Power, CEC compliant <sup>3</sup>
	PWS1836 6' prewire, 3/8" diameter, 18-gauge, 1 circuit
	PWS1846 6' prewire, 3/8" diameter, 18-gauge, 2 circuit
	USPOM United States Point of Manufacture

### Notes

- 1 Approximate lumen output. Lumen output will vary depending upon lens option chosen.
- 2 Not available with SLD.
- 3 When using pre-wire option, use PWS1846.



# Western Region Made-to-Order Series



## GTL Series, 2GTL

2' x 4' LED Recessed Troffer

### ORDERING INFORMATION

Specifications subject to change.

**Example:** 2GTL 4 40L LP835 N80

Series	Length	Trim Type	Lumens <sup>1</sup>	Door	Lens	Voltage	Driver
2GTL 2' wide recessed LED luminaire	4 4'	(blank) Grid	40L 4000 Lumens 48L 4800 Lumens 60L 6000 Lumens	(blank) Flush steel, white	(blank) #12 pattern acrylic, 0.125" thick A19 #19 pattern acrylic, 0.156" thick SWL Satin White	(blank) MVOLT 120-277V	GZ1 Dims to 1% (0-10V dimming) GZ10 Dims to 10% (0-10V dimming)

Color Temperature	Options
LP835 3500K	EL14L Emergency Battery Pack (1400 Lumens) <sup>3</sup>
LP840 4000K	E10WLCP EM Self-diagnostic battery pack, 10W Constant Power, CEC compliant <sup>3,4,5</sup>
	PWS1836 6' prewire, 3/8" diameter, 18-gauge, 1 circuit
	PWS1846 6' prewire, 3/8" diameter, 18-gauge, 2 circuit
	USPOM United States Point of Manufacture

### Notes

- 1 Approximate lumen output. Lumen output will vary depending upon lens option chosen.
- 2 Not available with SLD.
- 3 When using pre-wire option, use PWS1846.
- 4 Not available with SLD or GZ1 or GZ10 or EXA1 when combined with any of the following lumen packages: 72L, 88L, 100L or 140L.
- 5 Not available with EZ1 when combined with 100L or 140L lumen packages.

# Western Region Made-to-Order Series



## VT Series, 2VTL2

2' x 2' LED Volumetric Troffer

### ORDERING INFORMATION

Specifications subject to change.

**Example:** 2VTL2 40L ADP EZ1 LP840 N80

Series	Air Function	Lumens <sup>1</sup>	Diffuser	Voltage	Driver	Color Temperature
2VTL2	2x2 VTL (blank) Static	20L	ADP Acrylic diffuser, linear prismatic lens	(blank) MVOLT	GZ1 Dims to 1% (0-10V dimming) <sup>2</sup> GZ10 Dims to 10% (0-10V dimming) <sup>2</sup>	3000K
		33L				3500K
		40L				4000K

### Options

- EL14L Emergency Battery Pack (1400 Lumens)
- USPOM United States point of manufacture
- E10WLCP EM Self-diagnostic battery pack, 10W Constant Power, CEC compliant

### Notes

- 1 Approximate lumen output.
- 2 GZ1, GZ10 drivers not available with any controls or sensor options.



## VT Series, 2VTL4

2' x 4' LED Volumetric Troffer

### ORDERING INFORMATION

Specifications subject to change.

**Example:** 2VTL4 40L ADP EZ1 LP840

Series	Air Function	Lumens <sup>1</sup>	Diffuser	Voltage	Driver	Color Temperature
2VTL4	2x4 VTL (blank) Static	30L	ADP Acrylic diffuser, linear prismatic lens	(blank) MVOLT	GZ1 Dims to 1% (0-10V dimming) <sup>2</sup> GZ10 Dims to 10% (0-10V dimming) <sup>2</sup>	3000K
		40L				3500K
		48L				4000K
		60L				4000K
		72L				4000K

### Options

- EL14L 1400 lumen battery pack
- USPOM United States point of manufacture
- E10WLCP EM Self-diagnostic battery pack, 10W Constant Power, CEC compliant

### Notes

- 1 Approximate lumen output.
- 2 GZ1, GZ10 drivers not available with any controls or sensor options.
- 3 nLight EMG option requires a connection to existing nLight network. Power is provided from a separate N80 or N100 enabled fixture.



## BLT Series, 2BLT2

2' x 2' LED Volumetric Troffer

### ORDERING INFORMATION

Specifications subject to change.

**Example:** 2BLT2 33L ADP GZ1 LP835

Series	Air Function	Lumens <sup>1</sup>	Diffuser	Voltage	Driver
2BLT2 2x2 BLT	(blank) Static	<b>Standard efficiency (&gt;100 LPW)</b> 20L 2000 33L 3300 40L 4000	ADP Curved, Linear Prisms ADSM Curved, Smooth	(blank) MVOLT	GZ1 Dims to 1% (0-10V dimming) <sup>2</sup> GZ10 Dims to 10% (0-10V dimming) <sup>2</sup>

### Color Temperature

### Options

LP830 82CRI, 3000K	E10WLCP	EM Self-diagnostic battery pack, 10W Constant Power, CEC compliant <sup>3</sup>
LP835 82CRI, 3500K	PWS1836	6' pre-wire, 3/8" diameter, 18 gauge, 1 circuit
LP840 82CRI, 4000K	PWS1846	6' pre-wire, 3/8" diameter, 18 gauge, 1 circuit
	PWSLV	Two cables: one 6' pre-wire, 3/8" diameter, 18 gauge, purple and gray
	PWS1856LV	6' pre-wire, 3/8" diameter, 18 gauge, 1 circuit w/low voltage purple and gray wires

### Notes

- 1 Approximate lumen output.
- 2 GZ1 and GZ10 not available with any control or sensor options.
- 3 When using pre-wire option, use PWS1846 or PWS1846 PWSLV.

"T" version must be ordered when specifying an occupancy sensor.



## BLT Series, 2BLT4

2' x 4' LED Volumetric Troffer

### ORDERING INFORMATION

Specifications subject to change.

**Example:** 2BLT4 40L ADP GZ1 LP840

Series	Air Function	Lumens <sup>1</sup>	Diffuser	Voltage	Driver
2BLT4 2x4 BLT	(blank) Static	<b>Standard efficiency (&gt;100 LPW)</b> 30L 3000 40L 4000 48L 4800 60L 6000 72L 7200	ADP Curved, Linear Prisms ADSM Curved, Smooth SDP Square, Linear Prisms	(blank) MVOLT	GZ1 Dims to 1% (0-10V dimming) <sup>2</sup> GZ10 Dims to 10% (0-10V dimming) <sup>2</sup>

### Color Temperature

### Options

LP830 82CRI, 3000K	E10WLCP	EM Self-diagnostic battery pack, 10W Constant Power, CEC compliant <sup>3</sup>
LP835 82CRI, 3500K	PWS1836	6' pre-wire, 3/8" diameter, 18 gauge, 1 circuit
LP840 82CRI, 4000K	PWS1846	6' pre-wire, 3/8" diameter, 18 gauge, 1 circuit
	PWSLV	Two cables: one 6' pre-wire, 3/8" diameter, 18 gauge, purple and gray
	PWS1856LV	6' pre-wire, 3/8" diameter, 18 gauge, 1 circuit w/low voltage purple and gray wires

### Notes

- 1 Approximate lumen output.
- 2 GZ1 and GZ10 not available with any control or sensor options.
- 3 When using pre-wire option, use PWS1846 or PWS1846 PWSLV.

"T" version must be ordered when specifying an occupancy sensor.

# Western Region Made-to-Order Series



## STAK

LED Center Element Lay-In Troffer

### ORDERING INFORMATION

Specifications subject to change.

**Example:** STAK 2x4 4000LM 80CRI 35K COL MIN10 ZT MVOLT

Series		Size		Lumens		Color Rendering Index		Color Temperature		Lens	Minimum Dimming	Control Input	Voltage
STAK	STAK	2x2	2'x2'	3000LM	3000 Lumens	80CRI	80 CRI	35K	3500 K	COL	MIN10	ZT 0-10V	MVOLT 120V-277V
		2x4	2'x4'	4000LM	4000 Lumens			40K	4000 K				
				5000LM	5000 Lumens								

Emergency Options	Options	
E7W	PWS1836	6' prewire, 3/8" diameter, 18-gauge, 1 circuit
E10WLCP	PWS1846	6' prewire, 3/8" diameter, 18-gauge, 2 circuit
E15WLCP	PWS1856LV	6' pre-wire, 3/8" diameter, 18 gauge, 1 circuit w/low voltage purple and gray wires

# Western Region Made-to-Order Series



**CPHB**  
LED High Bay

**ORDERING INFORMATION** Specifications subject to change. **Example:** CPHB 24000LM SEF GCL MD 120 GZ10 40K 80CRI CPSBW LSXR6 HL DWH

Series	Lumens	Performance Package	Lens	Distribution	Voltage	Driver	Color Temperature
CPHB	12000LM 12,000 lumens	SEF Standard efficiency	GCL Glare Control Lens	MD Medium	MVOLT 120-277V	GZ10 0-10V dimming	40K 4000K
	15000LM 15,000 lumens						
	18000LM 18,000 lumens						
	24000LM 24,000 lumens						
	30000LM 30,000 lumens						
			ND Narrow	120 120V		50K 5000K	
			WD Wide	208 208V			
				240 240V			
				277 277V			

Color Rendering Index	Options	Finish	
80CRI 80 CRI	<p><b>Emergency Options:</b></p> <p>OCS RELOC® OnePass selectable cable 6' installed †</p> <p><b>Cord Sets: ‡</b></p> <p>CPSBW 6' white damp location cord with straight blade plug (voltage will match fixture, 120V or 277V only)</p> <p>CPTLW 6' white damp location cord with twist-lock plug (voltage will match fixture; Not avail with 208V or 240V)</p> <p>CNPW 6' white cord, no plug</p> <p>CNP4CW 6' white cord, 4 conductors (for use with battery)</p> <p>CNP5CDW 6' white cord, 5 conductors (includes dimming leads)</p> <p>CNPW12FT 12' White cord, no plug</p> <p>CNPW15FT 15' White cord, no plug</p>	<p><b>Individual Controls (LSXR): ‡</b></p> <p>LSXR6 ADC 360°integral high mount motion sensor with dimming &amp; switching photocell</p> <p>LSXR6 ANL 360°integral high mount motion sensor with High/Low (Off) occupancy dimming &amp; auto-dimming photocell</p> <p>*For 360° integral LOW MOUNT sensors, replace "6" in nomenclature with "10". For High Mount AISLEWAY sensors, replace "6" in nomenclature with "50". Ex: LSXR50 HL</p>	DWH Gloss white

**Notes**

‡ Lead Time: 3 days. Max Qty: 100 units.

‡ Option Value Ordering Restrictions	
Option Value	Ordering Restrictions
Cord Sets	Must specify voltage on cord sets with plugs.
Individual Controls (LSXR)	Comes standard with SPD. This sensor configuration is suitable for minimum ambient temperature of 14°F (-10°C). Not available with other controls.
OCS	Dry Location listed only. Not available with Battery Options.

# Western Region Made-to-Order Series



## LDN4

4" Open and Wallwash LED Downlight

**Max Order QTY 100 PCS**

### ORDERING INFORMATION

Specifications subject to change.

**Example: LDN4 20LM 35K L06AR LSS MVOLT UGZ**

Series	Color Temperature	Lumens <sup>1</sup>	Aperture/Trim Color				Finish	Voltage	Driver
LDN4 4" round	30 3000K	10 1000 lumens	L04	Downlight	AR	Clear	LSS Semi-specular	MVOLT Multi-volt	UGZ Universal dimming to 10% 0-10V; line voltage dimming (120V)
	35 3500K	15 1500 lumens	LW4	Wallwash			120 120V		
	40 4000K	20 2000 lumens					277 277V	UGZ1 Universal dimming to 1% 0-10V; line voltage dimming (120V)	
		30 3000 lumens							

### Options

- EL<sup>1</sup> Battery pack (integral test switch)
- E10WCP Emergency battery pack, 10W Constant Power with integral test switch.  
Certified in CA Title 20 MAEDB
- NPS80EZ<sup>2</sup> nLight<sup>®</sup> dimming pack controls 0-10V eldoLED drivers (EZ10, EZ1).
- NPS80EZER<sup>2</sup> nLight<sup>®</sup> dimming pack controls 0-10V eldoLED drivers (EZ10, EZ1). ER controls fixtures on emergency circuit.

### Notes

- 1 Must specify voltage 120V or 277V.
- 2 Specify voltage. ER for use with generator supply. EM power. Will require an emergency hot feed and normal hot feed.



# Western Region Made-to-Order Series



## LDN6

6" Open and Wallwash LED Downlight

**Max Order QTY 100 PCS**

### ORDERING INFORMATION

Specifications subject to change.

**Example: LDN6 35/15 L06AR LSS MVOLT GZ10**

Series	Color Temperature	Lumens <sup>1</sup>	Aperture/Trim Color		Finish	Voltage		Driver	
LDN6 6" round	30/ 3000K	10 1000 lumens	L06	Downlight	AR	Clear	LSS Semi-specular	UGZ Universal dimming to 10% 0-10V; line voltage dimming (120V)	
	35/ 3500K	15 1500 lumens	LW6	Wallwash					
	40/ 4000K	20 2000 lumens				MVOLT Multi-volt			UGZ1 Universal dimming to 1% 0-10V; line voltage dimming (120V)
		30 3000 lumens				120 120V 277 277V			

### Options

- EL<sup>2</sup> Battery pack
- E10WCP Emergency battery pack, 10W Constant Power with integral test switch. Certified in CA Title 20 MAEDB
- NPS80EZ<sup>2</sup> nLight® dimming pack controls 0-10V eldoLED drivers.
- NPS80EZ<sup>3</sup> nLight® dimming pack controls 0-10V eldoLED drivers (EZ10, EZ1).
- NPS80EZER<sup>3</sup> nLight® dimming pack controls 0-10V eldoLED drivers (EZ10, EZ1). ER controls fixtures on emergency circuit.

### Notes

- 1 Approximate lumen output.
- 2 Must specify voltage 120V or 277V.
- 3 Specify voltage. ER for use with generator supply EM power. Will require an emergency hot feed and normal hot feed.



**OnePass® Cable 2 Port, OC2**

Opening Ceiling Lighting System

**ORDERING INFORMATION**

Specifications subject to change.

**Example: OC2 277 12/2G 15**

Series	Voltage		Conductors		Length <sup>1</sup>	
OC2	277	277V	12/2G	Two 12AWG conductors plus one 12AWG ground	5	5 ft
	480	480V	12/3G	Three 12AWG conductors plus one 12AWG ground	9	9 ft
			10/2G	Two 10 AWG conductors, plus one 10 AWG ground	15	15 ft
			10/3G	Three 10 AWG conductors, plus one 10 AWG ground	21	21 ft
				25	25 ft	
				31	31 ft	
				35	35 ft	

**Notes**

<sup>1</sup> Standard lengths listed. Consult factory for custom lengths up to 50 ft.