



You need products FAST. You need LightQuick®.

Project schedules are demanding. You need a partner you can trust. Count on Acuity Brands to deliver the product you need — when, where and how you need it.



LIGHTQUICK®
DELIVERING ON-TIME SOLUTIONS

Our Solutions



STOCK

LightQuick® Stock:

Hundreds of products in-stock and available for **same-day*** shipment.

- Local Inventory
- Same-day Shipment*
- No Order Instruction Needed

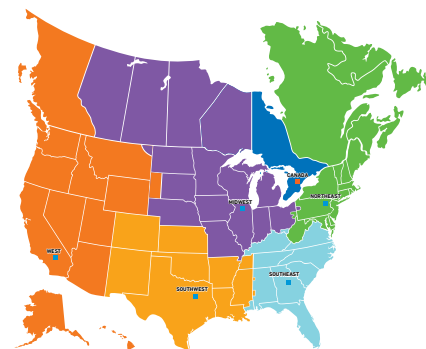


MADE TO ORDER

LightQuick® Made-to-Order:

2-day shipment on thousands of locally assembled products[^]

- Regionally Assembled
- Local Support
On-site customer care team to support your unique needs
- Local Manufacturing & Logistic Solutions⁺
In-house fabrication, paint capabilities, plus much more. See reverse side for details.
- Simply Mark Your PO with "LightQuick"



Our 6 Regional Manufacturing and/or Distribution Centers stock and manufacture products tailored to the needs of their local markets.



Visit www.acuitydistributorcenter.com today to view LightQuick inventory availability and configure made-to-order products!

* Orders received by noon ship same-day. Orders received after noon ship next-day.

Time based on local time of Distribution Center.

[^] Quantities limited to 100 per SKU.

⁺ Available in specific markets.

No two projects are alike.



The LightQuick® Made-to-Order program from Acuity Brands offers tailored assembling and logistic capabilities to meet your specific needs.



Custom Fabrication to meet your specific opportunity needs.



Infinite Powder Paint Options to transform your product's finish.



Custom Length Poles & Drill Patterns reduce normal lead time from 6 – 8 weeks to 2 days!



Special Markings to assist with job site logistics and coordination.



Custom Pallet Sizes to meet your unique job site requirements.



Local Delivery Trucks to bring you products when you need them 24/7.

Need a customized product or solution?

Contact your local customer care team to develop a strategy for your business opportunity as well as support you throughout the ordering and fulfillment process.

Not all services available at all Regional Manufacturing and Distribution Centers (RMDC). Please contact your local RMDC for details.

Commercial Indoor

	2AVL2 2AVL4	LED Direct/Indirect
	2AV	Fluorescent Direct/ Indirect
	2GTL	LED Recessed Troffer
	2GT8	Fluorescent Lensed Troffer
	2SP8	Fluorescent Lensed
	2PM3N	Fluorescent Parabolic
	2BLT2 2BLT4	LED Volumetric Troffer
	2VTL2 2VTL4	LED Volumetric Troffer
	2VT5 2VT8	Fluorescent Volumetric Troffer
	LB	Fluorescent Curved- Profile Wraparound



Industrial

	IBG	I-BEAM® LED High Bay
	ZL1D	LED Striplight

Downlighting

	LDN4	4" LED Downlight
	LDN6	6" LED Downlight

Components

	OC, OC2, OCS, OSC2, OSS, OCU, OD	
--	---	---

Unless otherwise stated, all products are 

Table of Contents

Category	Description	Page
Commercial Indoor		
LED Direct/Indirect	2AVL2, 2AVL4	5
Fluorescent Direct/Indirect	2AV	6-8
LED Recessed Troffer	2GTL	9-10
Fluorescent Lensed Troffer	2GT8	11
	2SP8	12
	2PM3N	13
Fluorescent Parabolic	2BLT2, 2BLT4	14, 15
LED Volumetric Troffer	2VTL2, 2VTL4	16
	2VT5, 2VT8	17
Fluorescent Volumetric Troffer	LB	18
Fluorescent Curved-Basket Wraparound		
Industrial		
I-BEAM® LED High Bay	IBG	19
LED Striplight	ZL1D	10
Downlighting		
LED Downlighting	LDN4, LDN6	21
Components		
Reloc Wiring Solutions	OC, OC2	22
	OCS, OSC2	23
	OSS, OCU	24
	OD	25

The made-to-order products within this catalog have a two-day shipment lead-time from order entry for quantities of 100 or less. For any option not included within the following pages, please contact your customer care representative to confirm availability and lead times.

Western Region Made-to-Order Series



AVANTE®, 2AVL2
 2' x 2' LED Direct/Indirect

ORDERING INFORMATION

Specifications subject to change.

Example: 2AVL2 30L MDR EZ1 LP835 N100

Series	Trim Type	Air Function	Lumens ¹	Diffuser	Voltage	Driver
2AVL2 AV LED	(blank) Grid Trim ST Screw Slot	(blank) Static (no air function)	20L 2000 Lumens 30L 3000 Lumens 40L 4000 Lumens	MDR Metal Diffuser, round holes SBL Straight louver, round holes ADP Acrylic diffuser, linear prismatic lens	(blank) MVOLT (120V-277V)	EZ1 eldoLED dims to 1% (0-10V dimming) GZ1 Dims to 1% (0-10V dimming) ² GZ10 Dims to 10% (0-10V dimming) ²

Color Temperature	Controls	Options
LP830 3000 K	N80	EL7L 700 Lumen battery pack
LP835 3500 K	N80EMG	EL14L 1400 Lumen battery pack ¹
LP840 4000 K	N100	E10WLCP EM Self-diagnostic battery pack, 10W Constant Power, CEC compliant
	N100EMG	PWS1836 6' prewire, 3/8" diameter, 18-gauge, 1 circuit PWS1846 6' prewire, 3/8" diameter, 18-gauge, 2 circuit PWS1856LV
		USPOM United States Point of Manufacture ³
		JP10 Palletized job pack, qty. 10
		JP20 Palletized job pack, qty. 20

Notes

- 1 Approximate lumen output.
- 2 GZ1, GZ10 not available with any Controls options
- 3 Use when mill certifications are required.

Western Region Made-to-Order Series



AVANTE®, 2AVL4
 2' x 4' LED Direct/Indirect

ORDERING INFORMATION

Specifications subject to change.

Example: 2AVL2 50L MDR EZ1 LP840 PWS1836

Series	Trim Type	Air Function	Lumens ¹	Diffuser	Voltage	Driver
2AVL4 AV LED	(blank) Grid Trim ST Screw Slot	(blank) Static (no air function)	30L 3000 Lumens 40L 4000 Lumens 50L 5000 Lumens	MDR Metal Diffuser, round holes ADP Acrylic diffuser, linear prismatic lens	(blank) MVOLT (120V-277V)	EZ1 eldoLED dims to 1% (0-10V dimming) GZ1 Dims to 1% (0-10V dimming) ² GZ10 Dims to 10% (0-10V dimming) ²
Color Temperature		Controls		Options		
LP835 3500 K	N80	N100 nLight with 80% lumen management		EL7L	700 Lumen battery pack	
LP840 4000 K	N80EMG	N100 nLight with 80% lumen management for generator EM power		EL14L	1400 Lumen battery pack ¹	
	N100	N100 nLight without lumen management		E10WLCP	EM Self-diagnostic battery pack, 10W Constant Power, CEC compliant	
	N100EMG	N100 nLight without lumen management for generator EM power		PWS1836	6' prewire, 3/8" diameter, 18-gauge, 1 circuit	
				PWS1846	6' prewire, 3/8" diameter, 18-gauge, 2 circuit	
				PWS1856LV	6' pre-wire, 3/8" diameter, 18 gauge, 1 circuit w/low voltage purple and gray wires	
				USPOM	United States Point of Manufacture ³	
				JP10	Palletized job pack, qty. 10	
				JP20	Palletized job pack, qty. 20	

Notes

- 1 Approximate lumen output.
- 2 GZ1, GZ10 not available with any Controls options
- 3 Use when mill certifications are required.

Western Region Made-to-Order Series



AVANTE®, 2AV

2' x 4' Fluorescent Direct/Indirect (F32 T8)

ORDERING INFORMATION

Specifications subject to change.

Example: 2AV G 2 32 MDR MVOLT GEB10IS USPOM LP835

Series	Mounting	Number of Lamps	Lamp Type	Diffuser	Voltage	Ballast Configurator	Ballast
2AV Avante	G Grid Trim ST Screw Slot	2 3	32 32W T8 (48")	ADP Acrylic Diffuser, Linear Prismatic Lens MDR Metal Diffuser, Round Holes SBL Straight Blade Louver	MVOLT 120V-277V 120 120V 277 277V	(blank) two 2-lamp ballasts for 2 lamp LST fixtures 1/3 one 3-lamp ballast 2/1 Two 1-lamp ballasts	GEB10IS Instant Start GEB10PS Program Start ADEZ BPNP GEB115S

Options

EL	Emergency Battery Pack (300 Lumens)	IC	Compliance with NEC insulated ceiling criteria
EL14	Emergency Battery Pack (1400 Lumens)	USPOM	Manufactured in the USA
PWS1836	6' prewire, 3/8" diameter, 18-gauge, 1 circuit	JP8	Job pack of 8
PWS1846	6' prewire, 3/8" diameter, 18-gauge, 2 circuit	JP10	Job pack of 10
PWS1856LV		JP20	Job pack of 20
LATC	T-bar clips	U	Unit packaging indicator
CSA	Meets Canadian Standards		

Lamp Installed

LP830	80+ CRI, 3000 K
LP835	80+ CRI, 3500 K
LP841	80+ CRI, 4100 K



AVANTE®, 2AV

2' x 4' Fluorescent Direct/Indirect (F32)

ORDERING INFORMATION

Specifications subject to change.

Example: 2AV G 2 32 MDR MVOLT GEB10IS

Series	Mounting	Number of Lamps	Lamp Type	Diffuser	Voltage	Ballast Configurator	Ballast
2AV Avante	G Grid Trim ST Screw Slot	2 3	32 32W T8 (48")	ADP Acrylic Diffuser, Linear Prismatic Lens MDR Metal Diffuser, Round Holes SBL Straight Blade Louver	MVOLT 120V-277V	(blank) two 2-lamp ballasts for 2 lamp LST fixtures 1/41/2 one 4-lamp ballast, one 2 lamp ballast for 3 lamp LST fixtures	GEB10IS Instant Start GEB10PS Program Start

Options

EL14	Emergency Battery Pack (1400 Lumens)	LP835	80+ CRI, 3500 K
JP10	Palletized job pack, qty. 10	LP841	80+ CRI, 4100 K
JP20	Palletized job pack, qty. 20		

Lamp Installed

Notes

1 See appendix for full details.

Western Region Made-to-Order Series



AVANTE®, 2AV

2' x 4' Fluorescent Direct/Indirect (F28 T5)

ORDERING INFORMATION

Specifications subject to change.

Example: 2AV ST 3 28T5 MDR MVOLT GEB10IS LP841

Series	Mounting	Number of Lamps	Lamp Type	Diffuser	Voltage	Ballast
2AV Avante	G Grid Trim ST Screw Slot	2 3	28T5 28 Watt T5	ADP Acrylic Diffuser, Linear Prismatic Lens MDR Metal Diffuser, Round Holes SBL Straight Blade Louver	MVOLT 120V-277V	GEB10IS Instant Start GEB10PS Program Start

Options	Lamp Installed
EL Emergency Battery Pack (300 Lumens)	LP835 80+ CRI, 3500 K
EL14 Emergency Battery Pack (1400 Lumens)	LP841 80+ CRI, 4100 K
PWS1836 6' prewire, 3/8" diameter, 18-gauge, 1 circuit	
PWS1846 6' prewire, 3/8" diameter, 18-gauge, 2 circuit	
JP10 Palletized job pack, qty. 10	
JP20 Palletized job pack, qty. 20	



AVANTE®, 2AV

2' x 4' Fluorescent Direct/Indirect (F17 T8)

ORDERING INFORMATION

Specifications subject to change.

Example: 2AV ST 3 17 MDR MVOLT GEB10IS LP841

Series	Mounting	Number of Lamps	Lamp Type	Diffuser	Voltage	Ballast Configurator	Ballast
2AV Avante	G Grid Trim ST Screw Slot	2 3	17 17 watt	ADP Acrylic Diffuser, Linear Prismatic Lens MDR Metal Diffuser, Round Holes SBL Straight Blade Louver	MVOLT 120V-277V	(blank) two 2-lamp ballasts for 2 lamp LST fixtures 1/3 one 3-lamp ballast	GEB10IS Instant Start GEB10PS Program Start

Options	Lamp Installed
EL Emergency Battery Pack (300 Lumens)	LP835 80+ CRI, 3500 K
EL14 Emergency Battery Pack (1400 Lumens)	LP841 80+ CRI, 4100 K
PWS1836 6' prewire, 3/8" diameter, 18-gauge, 1 circuit	
PWS1846 6' prewire, 3/8" diameter, 18-gauge, 2 circuit	
JP10 Palletized job pack, qty. 10	
JP20 Palletized job pack, qty. 20	

Western Region Made-to-Order Series



GTL Series, 2GTL

2' x 2' LED Recessed Troffer

ORDERING INFORMATION

Specifications subject to change.

Example: 2GTL 2 F 20L LP840 N80 PWS1836

Series	Length	Trim Type	Lumens ¹	Door	Lens	Voltage	Driver
2GTL 2' wide recessed LED luminaire	2 2'	(blank) Grid F Overlapping flange	20L 2000 Lumens 33L 3300 Lumens 40L 4000 Lumens 48L 4800 Lumens	(blank) Flush steel, white	(blank) #12 pattern acrylic, 0.125" thick A19 #19 pattern acrylic, 0.156" thick	(blank) MVOLT 120-277V 120 120V 277 277V	EZ1 eldoLED dims to 1% GZ1 Dims to 1% (0-10V dimming) GZ10 Dims to 10% (0-10V dimming)

Color Temperature	Controls ²	Options
LP835 3500 K	(blank) No Controls	EL14L Emergency Battery Pack (1400 Lumens) ³
LP840 4000 K	N80 N100 nLight with 80% lumen management	E10WLCP EM Self-diagnostic battery pack, 10W Constant Power, CEC compliant ³
	N80EMG N100 nLight with 80% lumen management for use with generator supply emergency power	PWS1836 6' prewire, 3/8" diameter, 18-gauge, 1 circuit
	N100 N100 nLight without lumen management	PWS1846 6' prewire, 3/8" diameter, 18-gauge, 2 circuit
	N100EMG nLight without lumen management for use with generator supply emergency power	LATC Earthquake Clip
		USPOM United States Point of Manufacture

Notes

- 1 Approximate lumen output. Lumen output will vary depending upon lens option chosen.
- 2 Not available with SLD.
- 3 When using pre-wire option, use PWS1846.



GTL Series, 2GTL

2' x 4' LED Recessed Troffer

ORDERING INFORMATION

Specifications subject to change.

Example: 2GTL 4 40L LP835 N80

Series	Length	Trim Type	Lumens ¹	Door	Lens	Voltage	Driver
2GTL 2' wide recessed LED luminaire	4 4'	(blank) Grid F Overlapping flange	40L 4000 Lumens 48L 4800 Lumens	(blank) Flush steel, white	(blank) #12 pattern acrylic, 0.125" thick A19 #19 pattern acrylic, 0.156" thick	(blank) MVOLT 120-277V 120 120V 277 277V	EZ1 eldoLED dims to 1% GZ1 Dims to 1% (0-10V dimming) GZ10 Dims to 10% (0-10V dimming)
Color Temperature	Controls ²			Options			
LP835 3500 K LP840 4000 K	(blank) N80 N80EMG N100 N100EMG	No Controls N100 nLight with 80% lumen management N100 nLight with 80% lumen management for use with generator supply emergency power N100 nLight without lumen management nLight without lumen management for use with generator supply emergency power	EL14L Emergency Battery Pack (1400 Lumens) ³ E10WLCP EM Self-diagnostic battery pack, 10W Constant Power, CEC compliant ^{3,4,5} PWS1836 6' prewire, 3/8" diameter, 18-gauge, 1 circuit PWS1846 6' prewire, 3/8" diameter, 18-gauge, 2 circuit LATC Earthquake Clip USPOM United States Point of Manufacture				

Notes

- 1 Approximate lumen output. Lumen output will vary depending upon lens option chosen.
- 2 Not available with SLD.
- 3 When using pre-wire option, use PWS1846.
- 4 Not available with SLD or GZ1 or GZ10 or EXA1 when combined with any of the following lumen packages: 72L, 88L, 100L or 140L.
- 5 Not available with EZ1 when combined with 100L or 140L lumen packages.

Western Region Made-to-Order Series



2GT8

2' x 2' Fluorescent Lensed Troffer

ORDERING INFORMATION

Specifications subject to change.

Example: 2GT8 3 17 A12 120 1/3

Series	Trim Type	Number of Lamps ¹	Lamp Type	Door Frame	Diffuser	Voltage
2GT8	2' wide (blank) Grid Trim F Flanged	2	17 17W T8 (24")	(blank) Flush steel, white	A12 #12 pattern acrylic	MVOLT ³ 120V-277V
		3	U316 31W T8 U (6" leg. 24") ²	FW Flush aluminum, white	A12125 #12 pattern acrylic, 0.125" thick	120 12V
		4		RW Regressed aluminum, white		277 277V

Ballast	Lamp
1/2 one 2-lamp ballast	LP830 80+ CRI, 3000 K
1/4 one 4-lamp ballast	LP835 80+ CRI, 3500 K
1/3 one 3-lamp ballast	LP841 80+ CRI, 4100 K
GEB10IS GEB10IS Electronic ballast, <10% THD, instant start	
GEB10RS Electronic ballast, <10% THD, rapid start	
EL Emergency Battery Pack (300 Lumens)	

Notes

- 1 4-lamp models available with 17-watt straight tubes only.
- 2 Not available on 3-lamp models. Use U31.
- 3 MVOLT standard for 120-277V applications, 50-60 hz operation. Some options require voltage specified.



2GT8

2' x 4' Fluorescent Lensed Troffer (T8)

ORDERING INFORMATION

Specifications subject to change.

Example: 2GT8 4 32 FW A12125 MVOLT 1/4 EL

Series	Trim Type	Number of Lamps	Lamp Type	Door Frame	Diffuser	Voltage
2GT8	2' wide (blank) Grid Trim F Flanged	2	32 32W T8 (48")	(blank) Flush steel, white	A12 #12 pattern acrylic	MVOLT ¹ 120V-277V
		3		FW Flush aluminum, white	A12125 #12 pattern acrylic, 0.125" thick	120 12V
		4		RW Regressed aluminum, white		277 277V

Ballast	Lamp
1/2 one 2-lamp ballast	EL Emergency Battery Pack (300 Lumens)
1/4 one 4-lamp ballast	EL14 Emergency Battery Pack (1400 Lumens)
1/3 one 3-lamp ballast	PWS1836 6' prewire, 3/8" diameter, 18-gauge, 1 circuit
GEB10IS GEB10IS Electronic ballast, <10% THD, instant start	CSA CSA Certified
GEB10PS Electronic ballast, <10% THD, programmed start	PWS1846 6' pre-wire, 3/8" diameter, 18 gauge, 2 circuit
GEB10RS Electronic ballast, <10% THD, rapid start	

Notes

- 1 MVOLT standard for 120-277V applications, 50-60 hz operation. Some options require voltage specified.

Western Region Made-to-Order Series



2SP8

2' x 4' Fluorescent Lensed Troffer (T8)

ORDERING INFORMATION

Specifications subject to change.

Example: 2SP8 G 3 32 A12 MVOLT 1/3 GEB10IS

Series	Trim Type	Number of Lamps	Lamp Type	Door Frame	Diffuser	Voltage	Options
2SP8 2' wide	G Grid Trim	2	32 32W T8 (48")	(blank) Flush steel, white	A12 #12 pattern acrylic A12125 #12 pattern acrylic, 0.125" thick	MVOLT ¹ 120V-277V	1/4 one 4-lamp ballast
	F Overlapping Flanged	3					1/3 one 3-lamp ballast
		4					GEB10IS Instant Start GEB10PS Program Start EL Emergency Battery Pack (300 Lumens) ² EL14 Emergency Battery Pack (1400 Lumens) ² PWS1836 6' prewire, 3/8" diameter, 18-gauge, 1 circuit PWS1846 6' prewire, 3/8" diameter, 18-gauge, 2 circuit USPOM United States Point of Manufacture

Notes

- 1 MVOLT standard for 120-277V applications, 50-60 hz operation. Some options require voltage specified.
- 2 Must order 2/3 or 1/41/2 ballast configuration with 6 lamp units.

Western Region Made-to-Order Series



PARAMAX®, 2PM3N

2' x 2' Fluorescent Parabolic Troffer

ORDERING INFORMATION

Specifications subject to change.

Example: 2PM3N G B 3 17 9 LD MVOLT GEB10IS EL

Series	Trim Type	Air Function	Number of Lamps	Lamp Type	Number of Cells/Louver	Voltage	Options ²
2PM3N Paramax 3" louver family	G Grid ST Screw Slot	B No air function	3	17 17W T8 (24")	9 LD Low-iridescent anodized diffuse silver	MVOLT ¹ 120-277V	1/3 One 3-lamp ballast
		D Dual function supply/return/heat removal	4				GEB10IS Instant Start GEB10PS Program Start EL Emergency Battery Pack (300 Lumens) EL14 Emergency Battery Pack (1400 Lumens)

Notes

- MVOLT standard for 120V
- Some options increase fixture depth. Consult factory if plenum space is a concern.



PARAMAX®, 2PM3N

2' x 4' Fluorescent Parabolic Troffer

ORDERING INFORMATION

Specifications subject to change.

Example: 2PM3N G D 3 32 18 LD MVOLT 1/3 GEB10IS

Series	Trim Type	Air Function	Number of Lamps	Lamp Type	Number of Cells/Louver	Voltage	Options ²
2PM3N Paramax 3" louver family	G Lay-in grid	B No air function	2	32 32W T8 (48")	18 LD Low-iridescent anodized diffuse silver	MVOLT ¹ 120-277V	1/3 one 3-lamp ballast
		D Dual function supply/return/heat removal	3				GEB10IS Instant Start GEB10PS Program Start EL Emergency Battery Pack (300 Lumens) EL14 Emergency Battery Pack (1400 Lumens) PWS1836 6' prewire, 3/8" diameter, 18-gauge, 1 circuit PWS1846 6' prewire, 3/8" diameter, 18-gauge, 2 circuit

Notes

- MVOLT standard for 120V and 277V applications. Some options require voltage specified.
- Some options increase fixture depth. Consult factory if plenum space is a concern.

Western Region Made-to-Order Series



BLT Series, 2BLT2
 2' x 2' LED Volumetric Troffer

ORDERING INFORMATION

Specifications subject to change.

Example: 2BLT2 33L ADP EZ1 LP835

Series	Air Function	Lumens ¹	Diffuser	Voltage	Driver
2BLT2 2x2 BLT	(blank) Static	Standard efficiency (>100 LPW) 20L 2000 33L 3300 40L 4000	ADP Curved, Linear Prisms ADSM Curved, Smooth	(blank) MVOLT 120 120V 277 277V	EZ1 eldoLED dims to 1% (0-10 volt dimming) GZ1 Dims to 1% (0-10V dimming) ² GZ10 Dims to 10% (0-10V dimming) ²

Color Temperature	Controls	Occupancy Controls	Options
LP830 82CRI, 3000 K	(blank) No nLight®	(blank) No Sensor Control	EL7L 700 lumen battery pack ⁵
LP835 82CRI, 3500 K	N80 nLight® with 80% lumen management		EL14L 1400 lumen battery pack ⁵
LP840 82CRI, 4000 K	N80EMG nLight® with 80% lumen management for use with generator supply EM power ³		E10WLCP EM Self-diagnostic battery pack, 10W Constant Power, CEC compliant ⁵
LP850 82CRI, 5000 K	N100 nLight® without lumen management		PWS1836 6' pre-wire, 3/8" diameter, 18 gauge, 1 circuit
LP930 90CRI, 3000 K	N100EMG nLight® with 100% lumen management for use with generator supply EM power ³		PWS1846 6' pre-wire, 3/8" diameter, 18 gauge, 1 circuit
LP935 90CRI, 3500 K			PWS1486 PWSLV Two cables: one 6' pre-wire, 3/8" diameter, 18 gauge, purple and gray ⁶
LP940 90CRI, 4000 K	NES7ADCX nLight® nES 7 ADCX PIR integral occupancy sensor with automatic dimming photocell ⁴		PWS1856LV 6' pre-wire, 3/8" diameter, 18 gauge, 1 circuit w/low voltage purple and gray wires ⁶
LP950 90CRI, 5000 K			

Notes

- 1 Approximate lumen output.
- 2 GZ1 and GZ10 not available with any control or sensor options.
- 3 nLight® EMG option requires a connection to existing nLight network. Power is provided from a separate N80 or N100 enabled fixture.
- 4 Requires N80, N80EMG, N100 or N100EMG.
- 5 When using pre-wire option, use PWS1846 or PWS1846 PWSLV.
- 6 Not available with nLight® wired network or individual controls.

Western Region Made-to-Order Series



BLT Series, 2BLT4
 2' x 4' LED Volumetric Troffer

ORDERING INFORMATION

Specifications subject to change.

Example: 2BLT4 40L ADP EZ1 LP840

Series	Air Function	Lumens ¹	Diffuser	Voltage	Driver
2BLT4 2x4 BLT	(blank) Static	Standard efficiency (>100 LPW) 30L 3000 40L 4000 46L 4600 48L 4800 60L 6000 72L 7200	ADP Curved, Linear Prisms ADSM Curved, Smooth SDP Square, Linear Prisms	(blank) MVOLT 120 120V 277 277V	EZ1 eldoLED dims to 1% (0-10 volt dimming) GZ1 Dims to 1% (0-10V dimming) ² GZ10 Dims to 10% (0-10V dimming) ²

Color Temperature	Controls	Occupancy Controls	Options
LP830 82CRI, 3000 K	(blank) No nLight®	(blank) No Sensor Control	EL7L 700 lumen battery pack ⁴
LP835 82CRI, 3500 K	N80 nLight® with 80% lumen management	NES7ADC nLight nES 7	EL14L 1400 lumen battery pack ⁴
LP840 82CRI, 4000 K	N80EMG nLight® with 80% lumen management for use with generator supply EM power ³	ADCX PIR integral occupancy sensor with automatic dimming photocell	E10WLCP EM Self-diagnostic battery pack, 10W Constant Power, CEC compliant ⁴
LP850 82CRI, 5000 K	N100 nLight® without lumen management		PWS1836 6' pre-wire, 3/8" diameter, 18 gauge, 1 circuit
LP930 90CRI, 3000 K	N100EMG nLight® with 100% lumen management for use with generator supply EM power ³		PWS1846 6' pre-wire, 3/8" diameter, 18 gauge, 1 circuit
LP935 90CRI, 3500 K			PWS1486 PWSLV Two cables: one 6' pre-wire, 3/8" diameter, 18 gauge, purple and gray ⁵
LP940 90CRI, 4000 K			PWS1856LV 6' pre-wire, 3/8" diameter, 18 gauge, 1 circuit w/low voltage purple and gray wires ⁵
LP950 90CRI, 5000 K			

Notes

- 1 Approximate lumen output.
- 2 GZ1 and GZ10 not available with any control or sensor options.
- 3 nLight® EMG option requires a connection to existing nLight network. Power is provided from a separate N80 or N100 enabled fixture.
- 4 When using pre-wire option, use PWS1846 or PWS1846 PWSLV.
- 5 Not available with nLight® wired network or individual controls.



VT Series, 2VTL2

2' x 2' LED Volumetric Troffer

ORDERING INFORMATION

Specifications subject to change.

Example: 2VTL2 24L ADP D24 EZ1 LP830 N80

Series	Air Function	Lumens ¹	Diffuser	Voltage	Wattage	Driver	Color Temperature
2VTL2 2x2 VTL	(blank) Static	20L 2000 Lumens	ADP Acrylic diffuser, linear prismatic lens	(blank) MVOLT	D24 24W ²	EZ1 eldoLED dimming 1% GZ1 Dims to 1% (0-10V dimming) ⁴ GZ10 Dims to 10% (0-10V dimming) ⁴	LP830 3000 K
		33L 3300 Lumens			D36 36W ³		LP835 3500 K
		40L 4000 Lumens					LP840 4000 K LP850 5000 K

Controls

NX	Dimming, no nLight
BLD	Bi-level dimming
N80	N100 nLight with 80% lumen management
N80EMG	N100 nLight with 80% lumen management for generator EM power
N100	N100 nLight without lumen management
N100EMG	N100 nLight without lumen management for generator EM power

Options

EL14L	Emergency Battery Pack (1400 Lumens)
USPOM	United States point of manufacture
E10WLCP	EM Self-diagnostic battery pack, 10W Constant Power, CEC compliant ⁵

Notes

- 1 Approximate lumen output.
- 2 For use with 2400 lumen system. Approximate input power (watts) +/-5%.
- 3 For use with 3600 lumen system. Approximate input power (watts) +/-5%.
- 4 GZ1, GZ10 drivers not available with any controls or sensor options.



VT Series, 2VTL4

2' x 4' LED Volumetric Troffer

ORDERING INFORMATION

Specifications subject to change.

Example: 2VTL2 24L ADP EZ1 LP830 N80

Series	Air Function	Lumens ¹	Diffuser	Voltage	Driver	Color Temperature
2VTL4 2x4 VTL	(blank) Static	30L 3000 Lumens ¹	ADP Acrylic diffuser, linear prismatic lens	(blank) MVOLT	EZ1 eldoLED dimming 1% GZ1 Dims to 1% (0-10V dimming) ² GZ10 Dims to 10% (0-10V dimming) ²	LP830 82 CRI, 3000 K
		40L 3600 Lumens				LP835 82 CRI, 3500 K
		48L 4800 Lumens				LP840 82 CRI, 4000 K
		60L 6000 Lumens				LP850 82 CRI, 5000 K
		72L 7200 Lumens				

Controls

N80	N100 nLight with 80% lumen management
N80EMG	N100 nLight with 80% lumen management for generator EM power
N100	N100 nLight without lumen management
N100EMG	N100 nLight without lumen management for generator EM power ³

Options

EL7L	700 lumen battery pack
EL14L	1400 lumen battery pack
E10WLCP	EM Self-diagnostic battery pack, 10W Constant Power, CEC compliant

Notes

- 1 Approximate lumen output.
- 2 GZ1, GZ10 drivers not available with any controls or sensor options.
- 3 nLight EMG option requires a connection to existing nLight network. Power is provided from a separate N80 or N100 enabled fixture.



VT Series, 2VT

2' x 2' Fluorescent Volumetric Troffer

ORDERING INFORMATION

Specifications subject to change.

Example: 2VT5 2 14T5 ADP MVOLT 1/3 GEB10IS LP835

Series	Number of Lamps	Wattage	Diffuser	Voltage	Ballast Configuration	Ballast	Lamp
2VT5 T5 2'x2' volumetric troffer	1	14T5 14W T5 (22")	ADP Acrylic linear prismatic	MVOLT ¹ 120V-277V	1/3 One, three-lamp ballast	GEB10PS T5 and T8 electronic, <10% THD, programmed start	LP835 80+ CRI, 3500 K
2VT8 T8 2'x2' volumetric troffer	2 3					GEB115 T5 electronic, <10% THD 1.15 ballast factor, programmed start GEB115S T5 electronic, <10% THD 1.15 ballast factor, step dimming, programmed start	LP841 80+ CRI, 4100 K

Notes

¹ MVOLT (120-277V) 50-60Hz.



VT Series, 2VT

2' x 4' Fluorescent Volumetric Troffer

ORDERING INFORMATION

Specifications subject to change.

Example: 2VT5 3 28T5 ADP MVOLT 1/3 GEB10PS LP835

Series	Number of Lamps	Wattage	Diffuser	Voltage	Ballast Configuration	Ballast
2VT5 T5 2'x4' volumetric troffer	1	28T5 28W T5 (46")	ADP Acrylic linear prismatic	MVOLT ¹ 120V-277V	1/3 One, three-lamp ballast	GEB10PS T5 and T8 electronic, <10% THD, programmed start
2VT8 T8 2'x4' volumetric troffer	2 3	32 32W T8 (48")				GEB95

Lamp	Options
LP835 80+ CRI, 3500 K LP841 80+ CRI, 4100 K LP830 80+ CRI, 3000 K	EL14 Emergency Battery Pack (1400 Lumens)

Notes

¹ Available with 54T5H0 only.

Western Region Made-to-Order Series



LB

Fluorescent Curved-Profile Wraparound (T8/T5)

ORDERING INFORMATION

Specifications subject to change.

Example: LB 2 28T5 MVOLT GEB10IS BIHP EL CSA

Series	Number of Lamps	Wattage	Voltage	Options
LB 2 lamps, 10" wide	2 4	28T5 28W T5 (46")	MVOLT 120-277V 120 120V	GEB10IS Instant Start GEB10PS Program Start
		32 32W T8 (48")	277 277V	ADEZ Advance "Mark X"; Dimming Range, 5% - 100%; Phase Control Circuit; REZ/VEZ. Dimming, <=10% (Series Lamp Operation, Rapid start) ADZT Advance "Mark VII"; Dimming Range, 5% - 100%; Low Voltage Control, Circuit (0-10); (Rapid start) APNP Advance Optanium; Programmed Start, parallel wired. <=10% NEMA Premium ballast, normal ballast factor (.88), T8 lamps, MVOLT ACNP Advance "Centium"; P##-SC; Normal output. <10%THD (Parallel Lamp Operation; Instant start)
				BIHP normal ballast factor (1.20) BILP low ballast factor (.78) EL Emergency Battery Pack (300 Lumens) EL14 Emergency Battery Pack (1400 Lumens) LP841 80+ CRI, 4100 K LP835 80+ CRI, 3500 K CSA Meets Canadian standards



LB

Fluorescent Curved-Profile Wraparound (T8)

ORDERING INFORMATION

Specifications subject to change.

Example: LB 4 32W T8 120 LP735

Series	Number of Lamps	Wattage	Voltage	Options
LB 4 lamps, 15-3/8" wide	4	32 32W T8 (48")	MVOLT 120-277V 120 120V 277 277V	GEB10IS Instant Start GEB10PS Program Start
				ADZT Advance "Mark VII"; Dimming Range, 5% - 100%; Low Voltage Control, Circuit (0-10); (Rapid start) ACNP Advance "Centium"; P##-SC; Normal output. <10%THD (Parallel Lamp Operation; Instant start) ADOP Advance Optanium; Normal light output. MVOLT, <=10% (Parallel Lamp, Instant-Start) BINP normal ballast factor (.88) BILP low ballast factor (.78)
				APNP Advance Optanium; programmed start, parallel wired <=10% (parallel lamp, instant-start) EL Emergency Battery Pack (300 Lumens) EL14 Emergency Battery Pack (1400 Lumens) LP735 70+ CRI, 3500 K LP741 70+ CRI, 4100 K LP835 80+ CRI, 3500 K LP841 80+ CRI, 4100 K

Western Region Made-to-Order Series



I-BEAM® IBG

LED High Bay

ORDERING INFORMATION

Specifications subject to change.

Example: IBG 18000LM SEF AFL GND MVOLT 0Z10 40K 80CRI DWH

Series	Lumens	Performance Package	Lens	Distribution	Voltage	Driver	Color Temperature
IBG	12000LM 12,000 lumens	SEF Standard efficiency	AFL Acrylic, frosted	GND General	MVOLT 120-277V	GZ10 0-10V dimming ⁵	40K 4000 K
IBGN ¹	15000LM 15,000 lumens	HEF Premium efficiency	ACL Clear acrylic	FD Focus	HVOLT 347-480V ²	AZ10 0-10V dimming, aux output ⁶	50K 5000 K
	18000LM 18,000 lumens		L/LENS Less lens	ND Narrow	120 120V		
	24000LM 24,000 lumens			WD Wide	277 277V		
	30000LM 30,000 lumens				480 480V ^{3,4}		

Color Rendering Index	Options	Finish
70CRI 70 CRI 80CRI 80 CRI 90CRI 90 CRI	OCS RELOC® OnePass® selectable cable 5' installed ⁵ Cord Sets: CS1W Straight plug, 120V ⁷ CS11W Twist-lock, 277V ⁷ CS93W 600 SO white cord, no plug (no voltage required)	DWH Gloss white Controls ^{7,8} : LCOZU Aisle motion sensor, pre-wired LAOZU 360° motion sensor, pre-wired LAMOSZU 360° motion sensor, dimming and switching photocell, pre-wired (T24 compliant) LCMOSZU Aisle motion sensor, dimming and switching photocell, pre-wired (T24 compliant) HLNASLADC ^{9,10} Haleon High Mount Aisleway Occ Sensor w/ADC Default, pre-wired; Bluetooth ⁴ HLN360ADC ^{9,10} Haleon 360° High Motion Occ Sensor w/ADC Default, pre-wired; Bluetooth ⁴

Notes

- 1 Available with 18000LM, 24000LM, 30000LM, and 36000LM only.
- 2 Not available with 8000LM. Not available with BTGD, nPP16D, nPP16DER, PS1050, PS10250, PS30250, or XAD.
- 3 When ordered with 8000LM voltage selected utilizes the fixture back pack.
- 4 Not available with nPP16D or nPP16DER.
- 5 Not available with Haleon sensor control options.
- 6 Required with Haleon sensor controls options.
- 7 Must specify voltage.
- 8 Not available with BPK, nPP16D, nPP16DER, nMSI, or nMSI360.
- 9 Must specify voltage, please refer to spec sheet.
- 10 Haleon sensor options only available for the 24,000 and 30,000 lumen options listed below:

IBGN 30000LM SEF L/LENS ND 480 AZ10 50K 70CRI OCS HLNASLADC DWH	CI Code *2520AY
IBGN 30000LM SEF L/LENS GND 480 AZ10 50K 70CRI OCS HLN360ADC DWH	CI Code *25206L
IBGN 24000LM SEF L/LENS ND 480 AZ10 50K 70CRI OCS HLNASLADC DWH	CI Code *25205K
IBGN 24000LM SEF L/LENS GND 480 AZ10 50K 70CRI OCS HLN360ADC DWH	CI Code *2523HP

Western Region Made-to-Order Series



ZL1D
LED Striplight

ORDERING INFORMATION

Specifications subject to change.

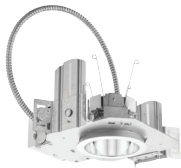
Example: ZL1D L48 3000LM FST MVOLT 40K 80CRI WH

Series		Length		Nominal Lumens ¹		Diffuser		Voltage		Color Temperature	
ZL1D	LED striplight	L48	48"	3000LM	3,000 lumens	FST	Drop lens	MVOLT	120-277V	35K	3500 K
				5000LM	5,000 lumens					40K	4000 K
Color Rendering Index		Options				Finish					
80CRI	80 CRI	E7W	Emergency battery pack, 7W (not available for California) ^{2,3}			WH	White				

Notes

- 1 See Operational Data on page 2 for actual lumens.
- 2 Not available with L24, 24" fixture. See spec sheet PS1055LCP, PS1555LCP and S750L for more information.
- 3 Must specify voltage. 120, 208, 240 or 277V.

Western Region Made-to-Order Series



LDN4

4" Open and Wallwash LED Downlight

ORDERING INFORMATION

Specifications subject to change.

Example: LDN4 35/15 L04AR LSS MVOLT EZ1

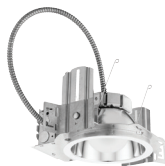
Series	Color Temperature	Lumens ¹	Aperture/Trim Color				Finish	Voltage		Driver	
LDN4 4" round	30/ 3000 K	10 1000 lumens	L04	Downlight	AR	Clear	LSS Semi-specular	MVOLT	Multi-volt	EZ1	eldoLED 1% 0-10V
	35/ 3500 K	15 1500 lumens	LW4	Wallwash	WR	White		120	120V	EZ10	eldoLED 10% 0-10V
	40/ 4000 K	20 2000 lumens						277	277V	GZ1	Dims to 1% (0-10V dimming)
									GZ10	Dims to 10% (0-10V dimming)	

Options

- EL¹ Battery pack (integral test switch)
- NPS80EZ¹ nLight® dimming pack controls 0-10V eldoLED drivers.
- NPS80EZER¹ nLight® dimming pack controls 0-10V eldoLED drivers. ER controls fixtures on emergency circuit.
- WL² Wet Location
- E10WLCP EM Self-diagnostic battery pack, 10W Constant Power, CEC compliant

Notes

- 1 Must specify voltage 120V or 277V.
- 2 Required option.



LDN6

6" Open and Wallwash LED Downlight

ORDERING INFORMATION

Specifications subject to change.

Example: LDN6 35/15 L06AR LSS MVOLT EZ10

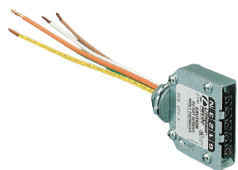
Series	Color Temperature	Lumens ¹	Aperture/Trim Color				Finish	Voltage		Driver	
LDN6 6" round	27/ 2700 K	10 1000 lumens	L06	Downlight	AR	Clear	LSS Semi-specular	MVOLT	Multi-volt	EZ1	eldoLED 1% 0-10V
	35/ 3500 K	15 1500 lumens	LW6	Wallwash	WR	White		120	120V	EZ10	eldoLED 10% 0-10V
	40/ 4000 K	20 2000 lumens						277	277V	GZ1	Dims to 1% (0-10V dimming)
									GZ10	Dims to 10% (0-10V dimming)	

Options

- EL² Battery pack
- NPS80EZ² nLight® dimming pack controls 0-10V eldoLED drivers.
- NPS80EZER² nLight® dimming pack controls 0-10V eldoLED drivers. ER controls fixtures on emergency circuit.
- WL³ Wet Location
- E10WLCP EM Self-diagnostic battery pack, 10W Constant Power, CEC compliant

Notes

- 1 Approximate lumen output.
- 2 Must specify voltage 120V or 277V.
- 3 Required option.



OnePass® Converter, OC

Open Ceiling Lighting System

ORDERING INFORMATION

Specifications subject to change.

Example: OC 277 12/4G

Series	Voltage		Conductors ¹		Options	
OC	120	120V	12/2G	Two 12AWG conductors plus one 12AWG ground	2N	Two circuit, two neutral ²
	208	208V	12/3G	Three 12AWG conductors plus one 12AWG ground		
	240	240V				
	277	277V				
	347	347V				
	480	480V				

Notes

- Conductors available in 12 AWG only. If 10 AWG is required, OSC2 must be used. Standard wire lead length is 6 inches. Consult factory for longer lead lengths.
- 2N available in 120V, 277V and 347V; 12/4G conductors only.



OnePass® Cable 2 Port, OC2

Opening Ceiling Lighting System

ORDERING INFORMATION

Specifications subject to change.

Example: OC2 208 12/2G 15 2N BK

Series	Voltage		Conductors		Length ¹		Options		Finish ³	
OC2	120	120V	12/2G	Two 12AWG conductors plus one 12AWG ground	5	5 ft	2N	Two circuit, two neutral ²	BK	Black
	208	208V	12/3G	Three 12AWG conductors plus one 12AWG ground	9	9 ft			WH	White
	240	240V	12/4G	Four 12AWG conductors plus one 12AWG ground	15	15 ft				
	277	277V	10/2G	Two 10 AWG conductors, plus one 10 AWG ground	21	21 ft				
	347	347V	10/3G	Three 10 AWG conductors, plus one 10 AWG ground	25	25 ft				
	480	480V	10/4G	Four 10 AWG conductors, plus one 10 AWG ground	31	31 ft				
					35	35 ft				

Notes

- Standard lengths listed. Consult factory for custom lengths up to 50 ft.
- 2N available in 120V, 277V and 347V; 12/4G and 10/4G conductors only.
- Colored cable available up to 35 ft. only. Contact factory for other finishes.



OnePass® Circuit Selector, OCS

Open Ceiling Lighting System

ORDERING INFORMATION

Specifications subject to change.

Example: OCS 120 10

Series	Voltage		Length		Options	
OCS	120	120V	(blank)	3 ft	WH	White cord
	208	208V	5	5 ft		
	240	240V	10	10 ft		
	277	277V				
	347	347V				
	480	480V				



OnePass® Cable, Two-Port, OSC2

Open Ceiling Lighting System

ORDERING INFORMATION

Specifications subject to change.

Example: OSC2 277 12/3G 21

Series	Voltage		Conductors		Length		Options	
OSC2	120	120V	12/2G	Two 12AWG conductors plus one 12AWG ground	15	15 ft	2N	Two circuit, two neutral
	208	208V	12/3G	Three 12AWG conductors plus one 12AWG ground	21	21 ft		
	240	240V	12/4G	Four 12AWG conductors plus one 12AWG ground	25	25 ft		
	277	277V			35	35 ft		
	347	347V						
	480	480V						



OnePass® Splitter Splice, OSS

Open Ceiling Lighting System

ORDERING INFORMATION

Specifications subject to change.

Example: OSS 277 12/4G

Series	Voltage		Conductors	
OSS	120	120V	12/4G	Four 12AWG conductors plus one 12AWG ground ¹
	208	208V		
	240	240V		
	277	277V		
	347	347V		
	480	480V		

Notes

¹ 12/4G conductors are standard and should be used when options C12S, LVC and EXT are not required.



OnePass® Cord Unselectable, OCU

Open Ceiling Lighting System

ORDERING INFORMATION

Specifications subject to change.

Example: OCU 208 TAP34 10

Series	Voltage		Tap Position ¹	Length	
OCU ¹	120	120V	TAP34	Two hots; pin position 3&4	5 5 ft
	208	208V	TAP123	Three hots, pin position 1, 2 & 3	10 10 ft
	240	240V	TAP122N	Tap two hots; pin position 1 and 2 with first and second neutrals ²	15 15 ft
	277	277V	TAP1234	Tap four hots; pin positions 1, 2, 3 & 4 (circuits 1 & 2)	
	347	347V	TAP22N	Tap 1 hot; pin position 2 with second neutral ²	
	480	480V			

Notes

¹ Tap position indicates the hot conductors pin position.

² Each configuration of TAP22N and TAP122N requires "12/4G 2N" or "10/4G 2N" OnePass components to complete a two neutral system



OnePass[®] OD

Open Ceiling Lighting System, Drop Cable

ORDERING INFORMATION

Specifications subject to change.

Example: OD 347 12/2G 1

Series	Voltage	Conductors ¹	Length ²	Options
OD	120 120V	12/2G	Two 12AWG conductors plus one 12AWG ground	2N Two circuit, two neutral ³
	208 208V	12/3G	Three 12AWG conductors plus one 12AWG ground	
	240 240V	12/4G	Four 12AWG conductors plus one 12AWG ground	
	277 277V			
	347 347V			
	480 480V			
			1 1 ft	
			5 5 ft	
			10 10 ft	
			15 15 ft	
			20 20 ft	
			25 25 ft	
			30 30 ft	
			35 35 ft	

Notes

- 1 Conductors available in 12 AWG only. 12 AWG will plug into 10 AWG product.
- 2 Standard lengths listed. Consult factory for custom lengths up to 50 ft.
- 3 2N available in 120V, 277V and 347V; 12/4G conductors only.