



You need solutions FAST. We are LightQuick®.

Project schedules are demanding. You need a partner you can trust. Count on Acuity Brands® to deliver the product you need — when, where and how you need it.



LIGHTQUICK®
DELIVERING ON-TIME SOLUTIONS

Our Solutions

Two Regional Manufacturing Centers and five Distribution Centers - Service stock and manufacture made-to-order products that are tailored to the needs of their local markets.

Local Stock - Over **7,000** products in-stock and available to ship same-day when orders are received by noon local time.

Local Made-to-Order - Over **100,000** configurable products ship in **2 days or less***.

Local Support - On-site customer care team to support your unique needs.

Local Manufacturing and Logistic Solutions - In-house fabrication, paint capabilities, plus much more. See reverse side for details.

Visit www.acuitydistributorcenter.com today to view LightQuick inventory availability and configure made-to-order-products! To find out which products can be configured at your local RMDC, visit www.acuitybrands.com/lightquick.

*Quantities limited to 100 per SKU.



No two projects are alike.



The LightQuick® Made-to-Order program from Acuity Brands offers tailored assembling and logistic capabilities to meet your specific needs.



Custom Fabrication to meet your specific opportunity needs.



Infinite Powder Paint Options to transform your product's finish.



Special Markings to assist with job site logistics and coordination.



Custom Pallet Sizes to meet your unique job site requirements.



Local Delivery Trucks to bring you products when you need them 24/7.

Need a customized product or solution?

Contact your local customer care team to develop a strategy for your business opportunity as well as support you throughout the ordering and fulfillment process.

Not all services available at all Regional Manufacturing and Distribution Centers (RMDC). Please contact your local RMDC for details.

Commercial Indoor

	2AVL2 2AVL4	LED Direct/Indirect
	2AV	Fluorescent Direct/ Indirect
	2GTL	LED Recessed Troffer
	BLC	LED Center Basket Troffer
	2BLT2 2BLT4	LED Volumetric Troffer
	2VTL2 2VTL4	LED Volumetric Troffer
	EPANL	LED Flat Panel


Industrial

	IBG	I-BEAM® LED High Bay
	IBGN	I-BEAM® LED High Bay
	IBE	I-BEAM® LED High Bay

Downlighting

	LDN4	4" LED Downlight
	LDN6	6" LED Downlight

Components

	OC2	
--	------------	---

Unless otherwise stated, all products are 

Table of Contents

Category	Description	Page
Commercial Indoor		
LED Direct/Indirect	2AVL2, 2AVL4	5-6
Fluorescent Direct/Indirect	2AV	7-8
LED Recessed Troffer	2GTL	9-10
LED Center-Basket Troffer	BLC	11
LED Volumetric Troffer	2BLT2, 2BLT4	12, 13
	2VTL2, 2VTL4	14
LED Flat Panel	EPANL	15, 16
Industrial		
I-BEAM® LED High Bay	IBG GEN 1	17
	IBG	18
	IBGN	19
	IBE	20
Downlighting		
LED Downlighting	LDN4, LDN6	21, 22
Components		
Reloc Wiring Solutions	OC2	2

The made-to-order products within this catalog have a two-day shipment lead-time from order entry for quantities of 100 or less.
 For any option not included within the following pages, please contact your customer care representative to confirm availability and lead times.

Western Region Made-to-Order Series



AVANTE®, 2AVL2
2' x 2' LED Direct/Indirect

ORDERING INFORMATION

Specifications subject to change.

Example: 2AVL2 30L MDR EZ1 LP835 N100

Series	Trim Type	Air Function	Lumens ¹	Diffuser	Voltage	Driver	
2AVL2 AV LED	(blank) Grid Trim ST Screw Slot	(blank) Static (no air function)	Standard Efficiency		MDR Metal Diffuser, round holes SBL Straight louver, round holes ADP Acrylic diffuser, linear prismatic lens	(blank) MVOLT (120V-277V)	EZ1 eldoLED dims to 1% (0-10V dimming) GZ1 Dims to 1% (0-10V dimming) ² GZ10 Dims to 10% (0-10V dimming) ²
			20LSE	2000 Lumens			
			30LSE	3000 Lumens			
			40LSE	4000 Lumens			
			High Efficiency				
			20LHE	2000 Lumens			
			30LHE	3000 Lumens			
			40LHE	4000 Lumens			

Color Temperature	Controls	Options
LP830 3000K	N80 N100 nLight with 80% lumen management	EL7L 700 Lumen battery pack
LP835 3500K	N80EMG N100 nLight with 80% lumen management for generator EM power	EL14L 1400 Lumen battery pack ¹
LP840 4000K	N100 N100 nLight without lumen management	E10WLCP EM Self-diagnostic battery pack, 10W Constant Power, CEC compliant
	N100EMG N100 nLight without lumen management for generator EM power	PWS1836 6' prewire, 3/8" diameter, 18-gauge, 1 circuit PWS1846 6' prewire, 3/8" diameter, 18-gauge, 2 circuit PWS1856LV USPOM United States Point of Manufacture ³ JP20 Palletized job pack, qty. 20

Notes

- 1 Approximate lumen output.
- 2 GZ1, GZ10 not available with any Controls options
- 3 Use when mill certifications are required.



AVANTE®, 2AVL4
2' x 4' LED Direct/Indirect

ORDERING INFORMATION

Specifications subject to change.

Example: 2AVL4 40L MDR EZ1 LP835

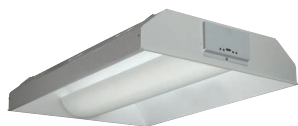
Series	Trim Type	Air Function	Lumens ¹	Diffuser	Voltage	Driver	
2AVL4 AV LED	(blank) Grid Trim ST Screw Slot	(blank) Static (no air function)	Standard Efficiency		(blank) MVOLT (120V-277V)	EZ1 eldoLED dims to 1% (0-10V dimming) GZ1 Dims to 1% (0-10V dimming) ² GZ10 Dims to 10% (0-10V dimming) ²	
			30LSE	3000 Lumens			MDR Metal Diffuser, round holes ADP Acrylic diffuser, linear prismatic lens
			40LSE	4000 Lumens			
			50LSE	5000 Lumens			
			High Efficiency				
			30LHE	3000 Lumens			
40LHE	4000 Lumens						
50LHE	5000 Lumens						

Color Temperature	Controls	Options
LP835 3500K	N80 N100 nLight with 80% lumen management	EL7L 700 Lumen battery pack
LP840 4000K	N80EMG N100 nLight with 80% lumen management for generator EM power	EL14L 1400 Lumen battery pack ¹
	N100 N100 nLight without lumen management	E10WLCP EM Self-diagnostic battery pack, 10W Constant Power, CEC compliant
	N100EMG N100 nLight without lumen management for generator EM power	PWS1836 6' prewire, 3/8" diameter, 18-gauge, 1 circuit PWS1846 6' prewire, 3/8" diameter, 18-gauge, 2 circuit PWS1856LV 6' pre-wire, 3/8" diameter, 18 gauge, 1 circuit w/low voltage purple and gray wires
		USPOM United States Point of Manufacture ³ JP10 Palletized job pack, qty. 10

Notes

- 1 Approximate lumen output.
- 2 GZ1, GZ10 not available with any Controls options
- 3 Use when mill certifications are required.

Western Region Made-to-Order Series



AVANTE®, 2AV

2' x 2' Fluorescent Direct/Indirect (F28 T5)

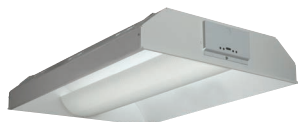
ORDERING INFORMATION

Specifications subject to change.

Example: 2AV ST 3 28T5 MDR MVOLT GEB10IS LP841

Series	Mounting	Number of Lamps	Lamp Type	Diffuser	Voltage	Ballast
2AV Avante	G Grid Trim ST Screw Slot	2 3	28T5 28 Watt T5	ADP Acrylic Diffuser, Linear Prismatic Lens MDR Metal Diffuser, Round Holes SBL Straight Blade Louver	MVOLT 120V-277V	GEB10IS Instant Start GEB10PS Program Start

Options	Lamp Installed
EL Emergency Battery Pack (300 Lumens)	LP835 80+ CRI, 3500K
EL14 Emergency Battery Pack (1400 Lumens)	LP841 80+ CRI, 4100K
PWS1836 6' prewire, 3/8" diameter, 18-gauge, 1 circuit	
PWS1846 6' prewire, 3/8" diameter, 18-gauge, 2 circuit	
JP10 Palletized job pack, qty. 10	
JP20 Palletized job pack, qty. 20	



AVANTE®, 2AV

2' x 2' Fluorescent Direct/Indirect (F17 T8)

ORDERING INFORMATION

Specifications subject to change.

Example: 2AV ST 3 17 MDR MVOLT GEB10IS LP841

Series	Mounting	Number of Lamps	Lamp Type	Diffuser	Voltage	Ballast Configurator	Ballast
2AV Avante	G Grid Trim ST Screw Slot	2 3	17 17 watt	ADP Acrylic Diffuser, Linear Prismatic Lens MDR Metal Diffuser, Round Holes SBL Straight Blade Louver	MVOLT 120V-277V	(blank) two 2-lamp ballasts for 2 lamp LST fixtures 1/3 one 3-lamp ballast	GEB10IS Instant Start GEB10PS Program Start

Options	Lamp Installed
EL Emergency Battery Pack (300 Lumens)	LP835 80+ CRI, 3500K
EL14 Emergency Battery Pack (1400 Lumens)	LP841 80+ CRI, 4100K
PWS1836 6' prewire, 3/8" diameter, 18-gauge, 1 circuit	
PWS1846 6' prewire, 3/8" diameter, 18-gauge, 2 circuit	
JP10 Palletized job pack, qty. 10	
JP20 Palletized job pack, qty. 20	

Western Region Made-to-Order Series



AVANTE®, 2AV

2' x 4' Fluorescent Direct/Indirect (F32 T8)

ORDERING INFORMATION

Specifications subject to change.

Example: 2AV G 2 32 MDR MVOLT GEB10IS USPOM LP835

Series	Mounting	Number of Lamps	Lamp Type	Diffuser	Voltage	Ballast Configurator	Ballast
2AV Avante	G Grid Trim ST Screw Slot	2 3	32 32W T8 (48")	ADP Acrylic Diffuser, Linear Prismatic Lens MDR Metal Diffuser, Round Holes SBL Straight Blade Louver	MVOLT 120V-277V 120 120V 277 277V	(blank) two 2-lamp ballasts for 2 lamp LST fixtures 1/3 one 3-lamp ballast 2/1 Two 1-lamp ballasts	GEB10IS Instant Start GEB10PS Program Start ADEZ BPNP GEB115S

Options

EL	Emergency Battery Pack (300 Lumens)	IC	Compliance with NEC insulated ceiling criteria
EL14	Emergency Battery Pack (1400 Lumens)	USPOM	Manufactured in the USA
PWS1836	6' prewire, 3/8" diameter, 18-gauge, 1 circuit	JP8	Job pack of 8
PWS1846	6' prewire, 3/8" diameter, 18-gauge, 2 circuit	JP10	Job pack of 10
PWS1856LV		JP20	Job pack of 20
LATC	T-bar clips	U	Unit packaging indicator
CSA	Meets Canadian Standards		

Lamp Installed

LP830	80+ CRI, 3000K
LP835	80+ CRI, 3500K
LP841	80+ CRI, 4100K



AVANTE®, 2AV

2' x 4' Fluorescent Direct/Indirect (F32)

ORDERING INFORMATION

Specifications subject to change.

Example: 2AV G 2 32 MDR MVOLT GEB10IS

Series	Mounting	Number of Lamps	Lamp Type	Diffuser	Voltage	Ballast Configurator	Ballast
2AV Avante	G Grid Trim ST Screw Slot	2 3	32 32W T8 (48")	ADP Acrylic Diffuser, Linear Prismatic Lens MDR Metal Diffuser, Round Holes SBL Straight Blade Louver	MVOLT 120V-277V	(blank) two 2-lamp ballasts for 2 lamp LST fixtures 1/41/2 one 4-lamp ballast, one 2 lamp ballast for 3 lamp LST fixtures	GEB10IS Instant Start GEB10PS Program Start

Options

EL14	Emergency Battery Pack (1400 Lumens)	LP835	80+ CRI, 3500K
JP10	Palletized job pack, qty. 10	LP841	80+ CRI, 4100K
JP20	Palletized job pack, qty. 20		

Lamp Installed

Notes

1 See appendix for full details.

Western Region Made-to-Order Series



GTL Series, 2GTL

2' x 2' LED Recessed Troffer

ORDERING INFORMATION

Specifications subject to change.

Example: 2GTL 2 F 20L LP840 N80 PWS1836

Series	Length	Trim Type	Lumens ¹	Door	Lens	Voltage	Driver
2GTL 2' wide recessed LED luminaire	2' 2'	(blank) Grid F Overlapping flange	20L 2000 Lumens 33L 3300 Lumens 40L 4000 Lumens 48L 4800 Lumens	(blank) Flush steel, white	(blank) #12 pattern acrylic, 0.125" thick A19 #19 pattern acrylic, 0.156" thick SWL Satin White	(blank) MVOLT 120-277V	EZ1 eldoLED dims to 1% GZ1 Dims to 1% (0-10V dimming) GZ10 Dims to 10% (0-10V dimming)
Color Temperature	Controls ²		Options				
LP835 3500K	(blank)	No Controls	EL14L	Emergency Battery Pack (1400 Lumens) ³			
LP840 4000K	N80	N100 nLight with 80% lumen management	E10WLCP	EM Self-diagnostic battery pack, 10W Constant Power, CEC compliant ³			
LP850 5000K	N80EMG	N100 nLight with 80% lumen management for use with generator supply emergency power	PWS1836	6' prewire, 3/8" diameter, 18-gauge, 1 circuit			
	N100	N100 nLight without lumen management	PWS1846	6' prewire, 3/8" diameter, 18-gauge, 2 circuit			
	N100EMG	nLight without lumen management for use with generator supply emergency power	USPOM	United States Point of Manufacture			

Notes

- 1 Approximate lumen output. Lumen output will vary depending upon lens option chosen.
- 2 Not available with SLD.
- 3 When using pre-wire option, use PWS1846.



GTL Series, 2GTL
2' x 4' LED Recessed Troffer

ORDERING INFORMATION

Specifications subject to change.

Example: 2GTL 4 40L LP835 N80

Series	Length	Trim Type	Lumens ¹	Door	Lens	Voltage	Driver
2GTL 2' wide recessed LED luminaire	4 4'	(blank) Grid F Overlapping flange	40L 4000 Lumens 48L 4800 Lumens 60L 6000 Lumens	(blank) Flush steel, white	(blank) #12 pattern acrylic, 0.125" thick A19 #19 pattern acrylic, 0.156" thick SWL Satin White	(blank) MVOLT 120-277V	EZ1 eldoLED dims to 1% GZ1 Dims to 1% (0-10V dimming) GZ10 Dims to 10% (0-10V dimming)
Color Temperature	Controls ²			Options			
LP835 3500K	(blank)	No Controls		EL14L	Emergency Battery Pack (1400 Lumens) ³		
LP840 4000K	N80	N100 nLight with 80% lumen management		E10WLCP	EM Self-diagnostic battery pack, 10W Constant Power, CEC compliant ^{3,4,5}		
LP850 5000K	N80EMG	N100 nLight with 80% lumen management for use with generator supply emergency power		PWS1836	6' prewire, 3/8" diameter, 18-gauge, 1 circuit		
	N100	N100 nLight without lumen management		PWS1846	6' prewire, 3/8" diameter, 18-gauge, 2 circuit		
	N100EMG	nLight without lumen management for use with generator supply emergency power		USPOM	United States Point of Manufacture		

Notes

- 1 Approximate lumen output. Lumen output will vary depending upon lens option chosen.
- 2 Not available with SLD.
- 3 When using pre-wire option, use PWS1846.
- 4 Not available with SLD or GZ1 or GZ10 or EXA1 when combined with any of the following lumen packages: 72L, 88L, 100L or 140L.
- 5 Not available with EZ1 when combined with 100L or 140L lumen packages.



BLC Series, BLC

2' x 2' and 2' x 4' LED Center Basket Troffer

ORDERING INFORMATION

Specifications subject to change.

Example: BLC 2X4 4000LM 80CRI 35K ADSM MIN10 ZT MVOLT

Series		Size		Lumens ¹		Color Rendering Index		Color Temperature		Diffuser	
BLC	BLC LED Center Basket Troffer	2x2	2' x 2'	3300LM	3300 Lumens	80CRI	80 CRI	35K	3500 K	ADSM	Curved, smooth
		4000LM	4000 Lumens	40K	4000 K			SDSM	Square, smooth		
		2x4	2' x 4'	4000LM	4000 Lumens			50K	5000 K		
				5000LM	5000 Lumens						

Minimum Dimming Level		Control Input		Voltage		Options					
MIN10	Constant Current, dimming to 10%	ZT	0-10V	MVOLT	120V - 277V	EL14L	1400 nominal lumens battery pack ³	PWS1846	6' prewire, 3/8" diameter, 18-gauge, 2 circuit		
						E10WLCP	EM self-diagnostic battery pack, 10W constant power, Certified in CA TITLE 20 MAEDBS ³	PWS1846 PWSLV	Two cables: one 6' pre-wire, 3/8" diameter, 18 gauge, 2 circuits; one 6' pre-wire, 3/8" diameter, 18 gauge purple and gray		
						PWS1856LV	6' pre-wire, 3/8" diameter, 18 gauge, 1 circuit w/low voltage purple and gray wires	BDP	Disconnect Plug		
						PWS1836	6' prewire, 3/8" diameter, 18-gauge, 1 circuit				

Notes

- 1 AppApproximate lumen output.
- 2 When using pre-wire option, use PWS1846 or PWS1846 PWSLV



BLT Series, 2BLT2
2' x 2' LED Volumetric Troffer

ORDERING INFORMATION

Specifications subject to change.

Example: 2BLT2 33L ADP EZ1 LP835

Series	Air Function	Lumens ¹	Diffuser	Voltage	Driver
2BLT2 2x2 BLT	(blank) Static	Standard efficiency (>100 LPW) 20L 2000 33L 3300 40L 4000	ADP Curved, Linear Prisms ADSM Curved, Smooth	(blank) MVOLT	EZ1 eldoLED dims to 1% (0-10 volt dimming) GZ1 Dims to 1% (0-10V dimming) ² GZ10 Dims to 10% (0-10V dimming) ²

Color Temperature	Controls	Occupancy Controls	Options
LP830 82CRI, 3000K	(blank) No nLight [®]	(blank) No Sensor Control	EL7L 700 lumen battery pack ⁵
LP835 82CRI, 3500K	N80 nLight [®] with 80% lumen management	NES7ADCX nLight [®] nES 7	EL14L 1400 lumen battery pack ⁵
LP840 82CRI, 4000K	N80EMG nLight [®] with 80% lumen management for use with generator supply EM power ³	ADCX PIR integral occupancy sensor with automatic dimming	E10WLCP EM Self-diagnostic battery pack, 10W Constant Power, CEC compliant ⁵
LP850 82CRI, 5000K	N100 nLight [®] without lumen management	photocell ⁴	PWS1836 6' pre-wire, 3/8" diameter, 18 gauge, 1 circuit
LP935 90CRI, 3500K	N100EMG nLight [®] with 100% lumen management for use with generator supply EM power ³		PWS1846 6' pre-wire, 3/8" diameter, 18 gauge, 1 circuit
LP940 90CRI, 4000K			PWS1846 PWSLV Two cables: one 6' pre-wire, 3/8" diameter, 18 gauge, purple and gray ⁶
			PWS1856LV 6' pre-wire, 3/8" diameter, 18 gauge, 1 circuit w/low voltage purple and gray wires ⁶

Notes

- 1 Approximate lumen output.
- 2 GZ1 and GZ10 not available with any control or sensor options.
- 3 nLight[®] EMG option requires a connection to existing nLight network. Power is provided from a separate N80 or N100 enabled fixture.
- 4 Requires N80, N80EMG, N100 or N100EMG.
- 5 When using pre-wire option, use PWS1846 or PWS1846 PWSLV.
- 6 Not available with nLight[®] wired network or individual controls.

Western Region Made-to-Order Series



BLT Series, 2BLT4

2' x 4' LED Volumetric Troffer

ORDERING INFORMATION

Specifications subject to change.

Example: 2BLT4 40L ADP EZ1 LP840

Series		Air Function		Lumens ¹		Diffuser		Voltage		Driver	
2BLT4	2x4 BLT	(blank)	Static	Standard efficiency (>100 LPW)		ADP	Curved, Linear Prisms	(blank)	MVOLT	EZ1	eldoLED dims to 1% (0-10 volt dimming)
				30L	3000	ADSM	Curved, Smooth			GZ1	Dims to 1% (0-10V dimming) ²
				40L	4000	SDP	Square, Linear Prisms			GZ10	Dims to 10% (0-10V dimming) ²
				48L	4800						
				60L	6000						
				72L	7200						

Color Temperature		Controls		Occupancy Controls		Options	
LP830	82CRI, 3000K	(blank)	No nLight [®]	(blank)	No Sensor Control	EL7L	700 lumen battery pack ⁴
LP835	82CRI, 3500K	N80	nLight [®] with 80% lumen management	NES7ADCX	nLight [®] nES 7 ADCX	EL14L	1400 lumen battery pack ⁴
LP840	82CRI, 4000K	N80EMG	nLight [®] with 80% lumen management for use with generator supply		PIR integral occupancy sensor with automatic dimming photocell ⁴	E10WLCP	EM Self-diagnostic battery pack, 10W Constant Power, CEC compliant ⁵
LP850	82CRI, 5000K		EM power ³			PWS1836	6' pre-wire, 3/8" diameter, 18 gauge, 1 circuit
LP935	90CRI, 3500K	N100	nLight [®] without lumen management			PWS1846	6' pre-wire, 3/8" diameter, 18 gauge, 1 circuit
LP940	90CRI, 4000K	N100EMG	nLight [®] with 100% lumen management for use with generator supply			PWS1846 PWSLV	Two cables: one 6' pre-wire, 3/8" diameter, 18 gauge, purple and gray ⁶
			EM power ³			PWS1856LV	6' pre-wire, 3/8" diameter, 18 gauge, 1 circuit w/low voltage purple and gray wires ⁶

Notes

- 1 Approximate lumen output.
- 2 GZ1 and GZ10 not available with any control or sensor options.
- 3 nLight[®] EMG option requires a connection to existing nLight network. Power is provided from a separate N80 or N100 enabled fixture.
- 4 Requires N80, N80EMG, N100 or N100EMG. Only available with EZ1 driver
- 5 When using pre-wire option, use PWS1846 or PWS1846 PWSLV.
- 6 Not available with nLight[®] wired network or individual controls.



VT Series, 2VTL2

2' x 2' LED Volumetric Troffer

ORDERING INFORMATION

Specifications subject to change.

Example: 2VTL2 40L ADP EZ1 LP840 N80

Series	Air Function	Lumens ¹	Diffuser	Voltage	Driver	Color Temperature	
2VTL2	2x2 VTL (blank) Static	20L	ADP Acrylic diffuser, linear prismatic lens	(blank) MVOLT	EZ1 eldoLED dimming 1% GZ1 Dims to 1% (0-10V dimming) ² GZ10 Dims to 10% (0-10V dimming) ²	LP830	
		33L				3000 Lumens	LP835
		40L				4000 Lumens	LP840
						LP850	

Controls

N80	N100 nLight with 80% lumen management
N80EMG	N100 nLight with 80% lumen management for generator EM power
N100	N100 nLight without lumen management
N100EMG	N100 nLight without lumen management for generator EM power

Options

EL14L	Emergency Battery Pack (1400 Lumens)
USPOM	United States point of manufacture
E10WLCP	EM Self-diagnostic battery pack, 10W Constant Power, CEC compliant

Notes

- 1 Approximate lumen output.
- 2 GZ1, GZ10 drivers not available with any controls or sensor options.



VT Series, 2VTL4

2' x 4' LED Volumetric Troffer

ORDERING INFORMATION

Specifications subject to change.

Example: 2VTL4 40L ADP EZ1 LP840

Series	Air Function	Lumens ¹	Diffuser	Voltage	Driver	Color Temperature	
2VTL4	2x4 VTL (blank) Static	30L	ADP Acrylic diffuser, linear prismatic lens	(blank) MVOLT	EZ1 eldoLED dimming 1% GZ1 Dims to 1% (0-10V dimming) ² GZ10 Dims to 10% (0-10V dimming) ²	LP830	
		40L				3000 Lumens ¹	LP835
		48L				3600 Lumens	LP840
		60L				4800 Lumens	LP850
		72L				6000 Lumens	82 CRI, 5000K

Controls

N80	N100 nLight with 80% lumen management
N80EMG	N100 nLight with 80% lumen management for generator EM power
N100	N100 nLight without lumen management
N100EMG	N100 nLight without lumen management for generator EM power ³

Options

EL7L	700 lumen battery pack
EL14L	1400 lumen battery pack
USPOM	United States point of manufacture
E10WLCP	EM Self-diagnostic battery pack, 10W Constant Power, CEC compliant

Notes

- 1 Approximate lumen output.
- 2 GZ1, GZ10 drivers not available with any controls or sensor options.
- 3 nLight EMG option requires a connection to existing nLight network. Power is provided from a separate N80 or N100 enabled fixture.

Western Region Made-to-Order Series



EPANL

2'x2' Fully Luminous LED Flat Panel

ORDERING INFORMATION

Specifications subject to change.

Example: EPANL 2X2 3400LM 80CRI 35K MIN10 MVOLT E10WCP

Series		Width and Length		Lumens		CRI		Color Temperature	
EPANL 2x2	Fully Luminous LED Flat Panel	2x2	2'x2'	Standard Lumens: 3400LM 3400 Lumens 4000LM 4000 Lumens		80CRI	80 CRI	35K	3500K
								40K	4000K

Minimum Dimming Level		Control Input		Voltage		Emergency Option		Options	
MIN10	Dims to 10%	ZT	Generic 0-10V Dimming	MVOLT	120-277V 120 120V 277 277V	E10WCP	EM Self-Diagnostic battery pack, 10W Constant Power, Certified in CA Title 20 MAEDBS ^{1,2,3}	PWS1836	6' pre-wire, 3/8" diameter, 18 gauge, 1 circuit
								PWS1846	6' pre-wire, 3/8" diameter, 18 gauge, 2 circuit
								PWS1846 PWSLV	Two cables: one 6' pre-wire, 3/8" diameter, 18 gauge, 2 circuits; one 6' pre-wire, 3/8" diameter, 18 gauge, purple and gray ^{5,6}
								PWS1856LV	6' pre-wire, 3/8" diameter, 18 gauge, 1 circuit w/low voltage purple and grey wires ⁴

Notes

- When using prewire option use PWS1846 or PWS1846PWSLV.
- Please refer to Emergency Battery Estimates Lumen section for the estimation. PS1055CP installed with lumen packages >6000. PS1055CP installed with lumen packages <5400.
- Voltage must be specified (120 or 277).
- Not available with NLTAIR2 RIO in the 2X2 4800LM and 1X4 or 2X4 6000LM and 6800LM.

Western Region Made-to-Order Series



EPANL

2'x4' Fully Luminous LED Flat Panel

ORDERING INFORMATION

Specifications subject to change.

Example: EPANL 2X4 4000LM 80CRI 35K MIN10 MVOLT E10WCP

Series		Width and Length		Lumens		CRI		Color Temperature	
EPANL 2x4	Fully Luminous LED Flat Panel	2x4	2'x4'	Standard Lumens: 4000LM 4000 Lumens		80CRI	80 CRI	35K	3500K
								40K	4000K

Manimum Dimming Level		Control Input ²		Voltage		Emergency Option		Options	
MIN10	Dims to 10% ¹	ZT	Generic 0-10V Dimming	MVOLT	120-277V	E10WCP	EM Self-Diagnostic battery pack, 10W Constant Power, Certified in CA Title 20 MAEDBS ^{1,2}	PWS1836	6' pre-wire, 3/8" diameter, 18 gauge, 1 circuit
				120	120V			PWS1846	6' pre-wire, 3/8" diameter, 18 gauge, 2 circuit
				277	277V			PWS1846 PWSLV	Two cables: one 6' pre-wire, 3/8" diameter, 18 gauge, 2 circuits; one 6' pre-wire, 3/8" diameter, 18 gauge, purple and gray ^{7,8}
								PWS1856LV	6' pre-wire, 3/8" diameter, 18 gauge, 1 circuit w/low voltage purple and grey wires ³

Notes

- 1 When using prewire option use PWS1846 or PWS1846PWSLV.
- 2 Please refer to Emergency Estimates Lumen section for the estimation. PS1055CP installed with lumen packages >6000. PS1055CP installed with lumen packages <5400.
- 3 Voltage must be specified (120 or 277).

Western Region Made-to-Order Series



I-BEAM® IBG GEN1

LED High Bay

IBG GEN1 is being phased out for the upgraded IBG. See next page for details. IBG GEN1 will be available for configuration through June 2020.

ORDERING INFORMATION

Specifications subject to change.

Example: IBG 18000LM SEF AFL GND MVOLT GZ10 40K 80CRI DWH GEN1

Series	Lumens	Performance Package	Lens	Distribution	Voltage	Driver	Color Temperature
IBG	12000LM 12,000 lumens	SEF Standard efficiency	AFL Acrylic, frosted	GND General	MVOLT 120-277V	GZ10 0-10V dimming ⁵	40K 4000K
IBGN ¹	15000LM 15,000 lumens	HEF Premium efficiency	ACL Clear acrylic	FD Focus	HVOLT 347-480V ²	AZ10 0-10V dimming, aux output ⁶	50K 5000K
	18000LM 18,000 lumens		L/LENS Less lens	WD Wide	120 120V		
	24000LM 24,000 lumens				277 277V		
	30000LM 30,000 lumens				480 480V ^{3,4}		

Color Rendering Index	Options	Finish	Generation
70CRI 70 CRI	OCS RELOC® OnePass® selectable cable 5' installed ⁵ Cord Sets: CS1W Straight plug, 120V ⁷ CS11W Twist-lock, 277V ⁷ CS93W 600 SO white cord, no plug (no voltage required)	DWH Gloss white	GEN1 GEN1
80CRI 80 CRI			
	Controls ^{7,8} : LCOZU Aisle motion sensor, pre-wired LAOZU 360° motion sensor, pre-wired LAMOSZU 360° motion sensor, dimming and switching photocell, pre-wired (T24 compliant) LCMOSZU Aisle motion sensor, dimming and switching photocell, pre-wired (T24 compliant) LAGOSZU 360° motion sensor, dimming and switching photocell with high/low occupancy operation, pre-wired (T24 compliant) HLNASLADC ^{9,10} Haleon High Mount Aisleway Occ Sensor w/ ADC Default, pre-wired; Bluetooth* HLN360ADC ^{9,10} Haleon 360° High Motion Occ Sensor w/ADC Default, pre-wired; Bluetooth*		

Notes

- Available with 18000LM, 24000LM, 30000LM, and 36000LM only.
- Not available with 8000LM. Not available with BTGD, nPP16D, nPP16DER, PS1050, PS10250, PS30250, or XAD.
- When ordered with 8000LM voltage selected utilizes the fixture back pack.
- Not available with nPP16D or nPP16DER.
- Not available with Haleon sensor control options.
- Required with Haleon sensor controls options.
- Must specify voltage.
- Not available with BPK, nPP16D, nPP16DER, nMSI, or nMSI360.
- Must specify voltage, please refer to spec sheet.
- Haleon sensor options only available for the 24,000 and 30,000 lumen options listed below:
 - IBGN 30000LM SEF L/LENS ND 480 AZ10 50K 70CRI OCS HLNASLADC DWH GEN1 CI Code *2520AY
 - IBGN 30000LM SEF L/LENS GND 480 AZ10 50K 70CRI OCS HLN360ADC DWH GEN1 CI Code *25206L
 - IBGN 24000LM SEF L/LENS ND 480 AZ10 50K 70CRI OCS HLNASLADC DWH GEN1 CI Code *25205K
 - IBGN 24000LM SEF L/LENS GND 480 AZ10 50K 70CRI OCS HLN360ADC DWH GEN1 CI Code *2523HP

Western Region Made-to-Order Series



I-BEAM® IBG

LED High Bay

ORDERING INFORMATION

Specifications subject to change.

Example: IBG 18000LM SEF AFL GND MVOLT GZ10 40K 80CRI DWH

Series	Lumens	Performance Package	Lens	Distribution	Voltage	Driver	Color Temperature
IBG	12000LM 12,000 lumens	SEF Standard efficiency	AFL Acrylic, frosted	GND General	MVOLT 120-277V	GZ10 0-10V dimming	40K 4000K
	15000LM 15,000 lumens	HEF Premium efficiency	ACL Clear acrylic		HVOLT 347-480V		50K 5000K
	18000LM 18,000 lumens		L/LENS Less lens		120 120V		
	24000LM 24,000 lumens		ATL Acrylic, textured lens	277 277V			
	30000LM 30,000 lumens			ADL Aisle Distribution	480 480V		
			WD Wide				

Color Rendering Index	Options	Finish
70CRI 70 CRI 80CRI 80 CRI	<p>OCS RELOC® OnePass® selectable cable 5' installed¹</p> <p>Cord Sets:</p> <ul style="list-style-type: none"> CPSBW 6' white damp location cord with straight blade plug (voltage matches fixture)¹ CPTLW 6' white damp location cord with twist-lock plug (voltage matches fixture)¹ CNPW 6' white damp location cord set without plug <p>Controls:</p> <p>Individual Controls:</p> <ul style="list-style-type: none"> LSXR50 Integral Aisle Mount motion sensor with standard on/off operation, pre-wired (formerly LCOZU) LSXR6 360° integral High Mount motion sensor with standard on/off operation, pre-wired (formerly LAOZU) LSXR6 ADC 360° integral High Mount motion sensor with dimming & switching photocell, pre-wired, T24 compliant (formerly LAMOSZU) LSXR50 ADC Integral Aisle Mount motion sensor with dimming & switching photocell, pre-wired, T24 compliant (formerly LCMOSZU) LSXR6 ANL 360° integral High Mount motion sensor with High/Low (Off) occupancy dimming & auto-dimming photocell, pre-wired, T24 compliant (formerly LAGOSZU) 	DWH Gloss white

Notes

¹ Must specify voltage.

*For complete footnotes consult IBG Primary Specification Sheet

Western Region Made-to-Order Series



I-BEAM® IBGN

LED High Bay

ORDERING INFORMATION

Specifications subject to change.

Example: IBG 18000LM SEF AFL GND MVOLT GZ10 40K 80CRI DWH

Series	Lumens	Performance Package	Lens	Distribution	Voltage	Driver	Color Temperature
IBGN	18000LM 18,000 lumens	SEF Standard efficiency	AFL Acrylic, frosted	GND General	MVOLT 120-277V	GZ10 0-10V dimming	40K 4000K
	24000LM 24,000 lumens	HEF Premium efficiency	ACL Clear acrylic	FD Focus Distribution	HVOLT 347-480V		50K 5000K
	30000LM 30,000 lumens		L/LENS Less lens	WD Wide	120 120V 277 277V 480 480V		

Color Rendering Index	Options	Finish
70CRI 70 CRI 80CRI 80 CRI	<p>OCS RELOC® OnePass® selectable cable 5' installed¹</p> <p>Cord Sets:</p> <p>CPSBW 6' white damp location cord with straight blade plug (voltage matches fixture)¹</p> <p>CPTLW 6' white damp location cord with twist-lock plug (voltage matches fixture)¹</p> <p>CNPW 6' white damp location cord set without plug</p> <p>Controls:</p> <p>Individual Controls:</p> <p>LSXR50 Integral Aisle Mount motion sensor with standard on/off operation, pre-wired (formerly LCOZU)</p> <p>LSXR6 360° integral High Mount motion sensor with standard on/off operation, pre-wired (formerly LAOZU)</p> <p>LSXR6 ADC 360° integral High Mount motion sensor with dimming & switching photocell, pre-wired, T24 compliant (formerly LAMOSZU)</p> <p>LSXR50 ADC Integral Aisle Mount motion sensor with dimming & switching photocell, pre-wired, T24 compliant (formerly LCMOSZU)</p> <p>LSXR6 ANL 360° integral High Mount motion sensor with High/Low (Off) occupancy dimming & auto-dimming photocell, pre-wired, T24 compliant (formerly LAGOSZU)</p> <p>Haleon Controls:</p> <p>HLN45A ADC Haleon Aisle Mount motion sensor. On/Off occupancy detection with auto-dimming photocell; Bluetooth enabled</p> <p>HLN45 ADC Haleon High Mount motion sensor. On/Off occupancy detection with auto-dimming photocell; Bluetooth enabled</p>	DWH Gloss white

Notes

- Must specify voltage
- Haleon sensor options only available for the 24,000 and 30,000 lumen options below:
 IBGN 30000LM SEF L/LENS ND 480 GZ10 50K 70CRI OCS HLN45A ADC DWH CI Code *266ATP
 IBGN 30000LM SEF L/LENS GND 480 GZ10 50K 70CRI OCS HLN45 ADC DWH CI Code *266ATN
 IBGN 24000LM SEF L/LENS ND 480 GZ10 50K 70CRI OCS HLN45A ADC DWH CI Code *267EPO
 IBGN 24000LM SEF L/LENS GND 480 GZ10 50K 70CRI OCS HLN45 ADC DWH CI Code *267ENV

*For complete footnotes consult IBG Primary Specification Sheet

Western Region Made-to-Order Series



I-BEAM® IBE

LED High Bay

ORDERING INFORMATION

Specifications subject to change.

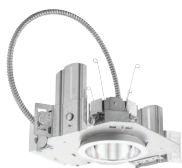
Example: IBE L24 18000LM ATC MD MVOLT GZ10 40K 80CRI DWH

Series	Lumens	Fixture Length	Lens	Distribution	Voltage	Driver	Color Temperature
IBE	12000LM 12,000 lumens	L24 24"	ATC Acrylic Textured semidiffuse lens, 040" thick L/LENS Less lens ¹	MD Medium ND Narrow	MVOLT 120-277V 120 120V 277 277V 480 480V ²	GZ10 0-10V dimming	40K 4000K
	15000LM 15,000 lumens						50K 5000K
	18000LM 15,000 lumens						
	22000LM 22,000 lumens						

Color Rendering Index	Options	Finish
80CRI 80 CRI	<p>E15WCP EM self-diagnostics battery pack, 5°C min., 15W, Certified in CA Title 20 MAEDBS^{2,3}</p> <p>BPK Fixture back pack (required with E15WCP)</p> <p>Cord Sets:</p> <p>CS1W 6' white cord with straight-blade plug, 120V⁴</p> <p>CS3W 6' white cord with twist lock plug, 120V⁴</p> <p>CS7W 6' white cord with straight-blade plug, 277⁴</p> <p>CS11W 6' white cord with twist-lock plug, 277V⁴</p> <p>CS93W 6' white cord, no plug</p> <p>Motion Sensors³:</p> <p>LCOZU Aisle motion sensor, pre-wired</p> <p>LAOZU 360° motion sensor, pre-wired</p> <p>LAMOSZU 360° motion sensor, dimming and switching photocell, pre-wired (T24 compliant)</p> <p>LCMOSZU Aisle motion sensor, dimming and switching photocell, pre-wired (T24 compliant)</p>	DWH Gloss white

Notes

- Visible pixilation is present when choosing L/LENS option. Not recommended for applications where direct viewing of high intensity LED's will be unacceptable.
- Utilizes fixture backpack. Utilizes PS1555CP. Not available with 480.
- Must specify voltage.
- All cord sets are 18/3, 6', white. Additional lengths available 10', 15' and 20'. (ex. CS1WL10)



LDN4

4" Open and Wallwash LED Downlight

ORDERING INFORMATION

Specifications subject to change.

Example: LDN4 35/15 L04AR LSS MVOLT GZ1

Series	Color Temperature	Lumens ¹		Aperture/Trim Color				Finish	Voltage		Driver
				L04	Downlight	AR	Clear		MVOLT	Multi-volt	
LDN4 4" round	30 3000K	10	1000 lumens	LW4	Wallwash	WR	White	LSS Semi-specular	120	120V	GZ1 Dims to 1% (0-10V dimming)
	35 3500K	15	1500 lumens						277	277V	GZ10 Dims to 10% (0-10V dimming)
	40 4000K	20	2000 lumens								EZ10 0-10V eldoLED driver with smooth and flicker-free deep dimming performance down to 10%
		30	3000 lumens								EZ1 0-10V eldoLED driver with smooth and flicker-free deep dimming performance down to 1%

Options

- EL¹ Battery pack (integral test switch)
- E10WCP Emergency battery pack, 10W Constant Power with integral test switch. Certified in CA Title 20 MAEDB
- NPP16D² nLight® network power/relay pack with 0=10V dimmung for non-eldoLED drivers (GZ10, GZ1).
- NPP16DER² nLight® network power/relay pack with 0=10V dimmung for non-eldoLED drivers (GZ10, GZ1). ER controls fixtures on emergency circuit.
- NPS80EZ² nLight® dimming pack controls 0-10V eldoLED drivers (EZ10, EZ1).
- NPS80EZER² nLight® dimming pack controls 0-10V eldoLED drivers (EZ10, EZ1). ER controls fixtures on emergency circuit.

Notes

- 1 Must specify voltage 120V or 277V.
- 2 Specify voltage. ER for use with generator supply. EM power. Will require an emergency hot feed and normal hot feed.



LDN6

6" Open and Wallwash LED Downlight

ORDERING INFORMATION

Specifications subject to change.

Example: LDN6 35/15 L06AR LSS MVOLT GZ10

Series	Color Temperature	Lumens ¹		Aperture/Trim Color				Finish	Voltage		Driver
				L06	Downlight	AR	Clear		MVOLT	Multi-volt	
LDN6 6" round	27/ 2700K	10	1000 lumens	L06	Downlight	AR	Clear	LSS Semi-specular	MVOLT	Multi-volt	GZ1 Dims to 1% (0-10V dimming) GZ10 Dims to 10% (0-10V dimming) EZ10 0-10V eldoLED driver with smooth and flicker-free deep dimming performance down to 10% EZ1 0-10V eldoLED driver with smooth and flicker-free deep dimming performance down to 1%
	30/ 3000K	15	1500 lumens	LW6	Wallwash	WR	White		120	120V	
	35/ 3500K	20	2000 lumens						277	277V	
	40/ 4000K	30	3000 lumens								

Options

- EL² Battery pack
- E10WCP Emergency battery pack, 10W Constant Power with integral test switch. Certified in CA Title 20 MAEDB
- NPS80EZ² nLight® dimming pack controls 0-10V eldoLED drivers.
- NPP16D³ nLight® network power/relay pack controls 0-10V dimming for non-eldoLED drivers. (GZ10, GZ1).
- NPP16DER³ nLight® network power/relay pack controls 0-10V dimming for non-eldoLED drivers. (GZ10, GZ1). ER controls fixtures on emergency circuit.
- NPS80EZ³ nLight® dimming pack controls 0-10V eldoLED drivers (EZ10, EZ1).
- NPS80EZER³ nLight® dimming pack controls 0-10V eldoLED drivers (EZ10, EZ1). ER controls fixtures on emergency circuit.

Notes

- 1 Approximate lumen output.
- 2 Must specify voltage 120V or 277V.
- 3 Specify voltage. ER for use with generator supply EM power. Will require an emergency hot feed and normal hot feed.



OnePass® Cable 2 Port, OC2

Opening Ceiling Lighting System

ORDERING INFORMATION

Specifications subject to change.

Example: OC2 208 12/2G 15 2N BK

Series	Voltage		Conductors		Length ¹		Options		Finish ³	
OC2	208	208V	12/2G	Two 12AWG conductors plus one 12AWG ground	5	5 ft	2N	Two circuit, two neutral ²	BK	Black
	277	277V	12/3G	Three 12AWG conductors plus one 12AWG ground	9	9 ft			WH	White
	480	480V	12/4G	Four 12AWG conductors plus one 12AWG ground	15	15 ft				
			10/2G	Two 10 AWG conductors, plus one 10 AWG ground	21	21 ft				
			10/3G	Three 10 AWG conductors, plus one 10 AWG ground	25	25 ft				
			10/4G	Four 10 AWG conductors, plus one 10 AWG ground	31	31 ft				
					35	35 ft				

Notes

- 1 Standard lengths listed. Consult factory for custom lengths up to 50 ft.
- 2 2N available in 120V, 277V and 347V; 12/4G and 10/4G conductors only.
- 3 Colored cable available up to 35 ft. only. Contact factory for other finishes.