

Base Covers - Aluminum Replacement Procedure

Please review the illustrations and photos of our different base covers and bolt/nut covers. The order should be based on the nomenclature shown below the appropriate drawing or photograph. Please make sure to include the color.

If a visual match cannot be determined, the agent must review the original pole order to find the pole vendor and then use the below information to ID component.

Base covers are made of sheet aluminum, cast aluminum, and spun aluminum depending on the type of pole.

Hardware is included

Nomenclature Key:

FBC = Full base cover

BLTCVR = Bolt/Nut Cover

ALM = Aluminum

1PC = 1 piece

2PC = 2 pieces

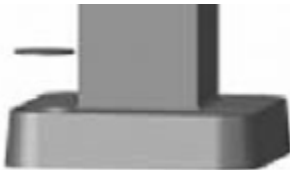
Vendor Code – Refer to the original order with pole line to identify the correct vendor

- VAL = Valmont
- HAP = HAPCO

Example: RK1RTA 7E FBCALM2PC DDB VAL

Bolt/Nut Covers:

- **SQUARE Aluminum Poles:** Bolt/Nut covers are standard with the cast base aluminum poles. This is a disc that will slide into the 4 bolts/nuts openings at the pole base.



- **ROUND Aluminum Poles:** Bolt/Nut covers are standard with round aluminum poles. This is like an “aluminum cap” that individually covers each bolt/nut at the base.



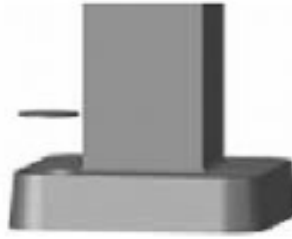
- **3RTA** pole requires a special full base cover. Bolt/Nut cover option is not available for 3RTA pole.

Full Base Cover:

- Option of ordering a full base cover is available. Please see below for the correct nomenclatures.



Replacement Bolt/Nut Cover (Discs) for Square Aluminum Poles



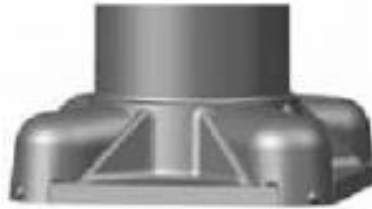
RK1SSA (Shaft base size) BLTCVR (FINISH) VAL
Set of 4

4" & 5" Square pole: 2.531" DIA.

6" Square pole: 2.875" DIA.

6.75" Square pole: 6.75" DIA.

Replacement Bolt/Nut Covers for Round Aluminum Poles



RK1RSA (Shaft base size) BLTCVR (FINISH) VAL
RK1RTA (Shaft base size) BLTCVR (FINISH) VAL
Set of 4

4", 4.5", 5", 6" Round pole: 2.84" X 2.88"

7" & 8" Round pole: 2.97" X 3.38"

10" Round pole: 3.1" X 3.47"

Replacement Full Base Covers for Square Aluminum Poles



RK1SSA (Shaft base size) FBCALM2PC (FINISH) VAL

SQUARE STRAIGHT ALUMINUM

2 Pieces – Square Cast Aluminum Base Cover

FBC Size for 4" Shaft Size = 13"

FBC Size for 5" Shaft Size = 13"

FBC Size for 6" Shaft Size = 14"

FBC Size for 7" Shaft Size = 17"

Replacement Full Base Covers for **Round** Aluminum Poles



RK1RTA (Shaft base size) FBCALM1PC (FINISH) VAL
RK1RTA (Shaft base size) FBCALM2PC (FINISH) VAL

ROUND TAPERED ALUMINUM

1 Piece – Round Spun Aluminum Base Cover
2 Pieces – Round Spun Aluminum Base Cover

FBC Size for 4" Shaft Size = 11.63"
FBC Size for 5" Shaft Size = 13.00"
FBC Size for 6" Shaft Size = 13.75"
FBC Size for 7" Shaft Size = 14.25"
FBC Size for 8" Shaft Size = 16.87"
FBC Size for 9" Shaft Size = 19.75"
FBC Size for 10" Shaft Size = 19.75"

RK13RTA (Shaft base size) FBCALM1PC (FINISH) VAL
RK13RTA (Shaft base size) FBCALM2PC (FINISH) VAL

3-BOLT ROUND STRAIGHT ALUMINUM

1 Piece – Round Spun Aluminum Base Cover
2 Pieces – Round Spun Aluminum Base Cover

FBC Size for 4" Shaft Size = 9.25" ID x 5.5" Tall w/ 4.125" Hole
FBC Size for 5" Shaft Size = 10.5" ID x 5.5" Tall w/ 5.125" Hole

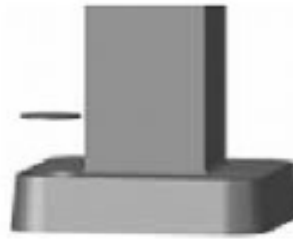
RK1RSA (Shaft base size) FBCALM1PC (FINISH) VAL
RK1RSA (Shaft base size) FBCALM2PC (FINISH) VAL

ROUND STRAIGHT ALUMINUM

1 Piece – Round Spun Aluminum Base Cover
2 Pieces – Round Spun Aluminum Base Cover

FBC Size for 4" Shaft Size = 11.63"
FBC Size for 4.5" Shaft Size = 13.00"
FBC Size for 5" Shaft Size = 13.00"
FBC Size for 6" Shaft Size = 13.75"

Replacement Bolt/Nut Cover (Discs) for Square Aluminum Poles

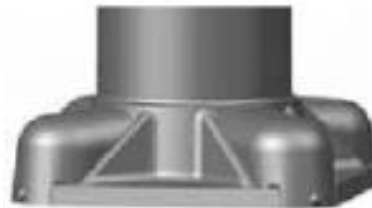


RK1SSA (Shaft base size) BLTCVR (FINISH) HAP
Set of 4

4" & 5" Square pole: 2.531" DIA.

6" Square pole: 2 .875" DIA.

Replacement Bolt/Nut Covers for Round Aluminum Poles



RK1RSA (Shaft base size) BLTCVR (FINISH) HAP
RK1RTA (Shaft base size) BLTCVR (FINISH) HAP
Set of 4

4",4.5",5",6" Round pole: 2.84" X 2.88"

7" & 8" Round pole: 2.97" X 3.38"

10" Round pole: 3.1" X 3.47"

Replacement Full Base Covers for Square Aluminum Poles



RK1SSA (Shaft base size) FBCALM2PC (FINISH) HAP

SQUARE STRAIGHT ALUMINUM

2 Pieces – Square Aluminum Base Cover

FBC Size for 4" Shaft Size = 11.25"

FBC Size for 5" Shaft Size =12.5"

FBC Size for 6" Shaft Size = 13.75"

HAPCO

Replacement Full Base Covers for Round Aluminum Poles



RK1RTA (Shaft base size) FBCALM1PC (FINISH) HAP
RK1RTA (Shaft base size) FBCALM2PC (FINISH) HAP

ROUND TAPERED ALUMINUM

2 Pieces – Round Aluminum Base Cover

FBC Size for 4" Shaft Size = 9.75"
FBC Size for 5" Shaft Size = 9.75"
FBC Size for 6" Shaft Size = 12.75"
FBC Size for 7" Shaft Size = 13.91"
FBC Size for 8" Shaft Size = 14.88"
FBC Size for 9" Shaft Size = 17"
FBC Size for 10" Shaft Size = 17.94"

RK1RSA (Shaft base size) FBCALM1PC (FINISH) HAP
RK1RSA (Shaft base size) FBCALM2PC (FINISH) HAP

ROUND STRAIGHT ALUMINUM

2 Pieces – Round Aluminum Base Cover

FBC Size for 4" Shaft Size = 9.75"
FBC Size for 4.5" Shaft Size = 10.44"
FBC Size for 5" Shaft Size = 9.75"
FBC Size for 6" Shaft Size = 12.75"

RK1 PUSHINS DBL

DISCLAIMER: Please be advised, Acuity will not be liable for any losses or damages in connection with these replacement parts. Use of information contained on this documentation is at your own risk. Please do your due diligence to research the proper part(s) to match your existing pole(s). For any further questions and concerns, please contact Tech Support at 1-800-279-804