

SEQUENCE OF OPERATION:

LIGHTS

- ALL FIXTURES ARE DIMMABLE
- ADJUSTABLE HIGH/LOW TRIM

OCCUPANCY CONTROL:

- FIXTURES AUTOMATICALLY GO TO FULL BRIGHT WHEN OCCUPIED
- FIXTURES AUTOMATICALLY TURN OFF OR OPTIONALLY CAN BE CONFIGURED TO DROP TO LOW DIM SETTING WHEN SPACE BECOMES VACANT

DAYLIGHT CONTROL:

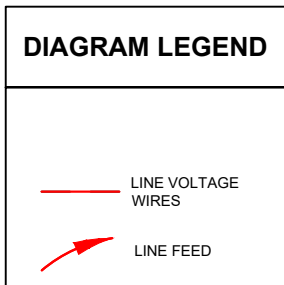
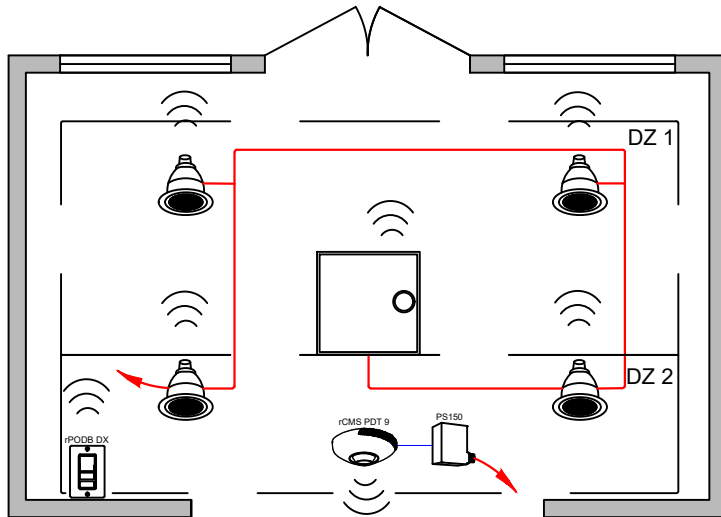
- SMOOTH CONTINUOUS DIMMING DAYLIGHT ZONES DEFINED BY RELAY MODULE WIRING
- NOT REQUIRED FOR AREAS WITHOUT WINDOWS OR THAT HAVE LOADS <150W IN SIDELIT ZONES

MANUAL CONTROL:

- ON/OFF & RAISE/LOWER CONTROL OF FIXTURES

ADDITIONAL OPTIONS:

- SPACE/ZONE CAN BE CONNECTED TO NLIGHT BACKBONE TO ENABLE NETWORK CONTROL OR TIME SCHEDULES (C405.2.2.1)
- HVAC CONTROL AVAILABLE THROUGH SYSTEM-WIDE BACNET® INTERFACE OPTION ON THE ECLYPSE CONTROLLER OR THROUGH OCCUPANCY SENSOR AUXILIARY RELAY (AR) CONTACT OPTION



BILL OF MATERIAL

QTY	PRODUCT #	DESCRIPTION
4	SEE NOTE	NLIGHT WIRED ENABLED DOWNLIGHT
1	SEE NOTE	NLIGHT WIRED ENABLED TROFFER
1	nPODM DX	ON/OFF, RAISE/LOWER WALL POD
1	nCM ADCX	DAYLIGHT SENSOR
1	nCM PDT 9 ADCX	OCCUPANCY SENSOR AND DAYLIGHTING

SUPPORTS THE FOLLOWING REQUIREMENTS:

- ✓ FULL AUTO-OFF VIA OCCUPANCY SENSOR (C405.2.1.1)
- ✓ ENHANCED DIGITAL LIGHTING CONTROLS (C406.4)
- ✓ SIDELIGHT DAYLIGHT ZONE (C405.2.3.2)
- ✓ ENHANCED DIGITAL LIGHTING CONTROLS (C406.4)

Note: Contact your local lighting agent for more information on nLight enabled fixtures. nLight enabled fixtures provide Luminaire Level Lighting Controls (LLLC), as specified in the WSEC CODE.