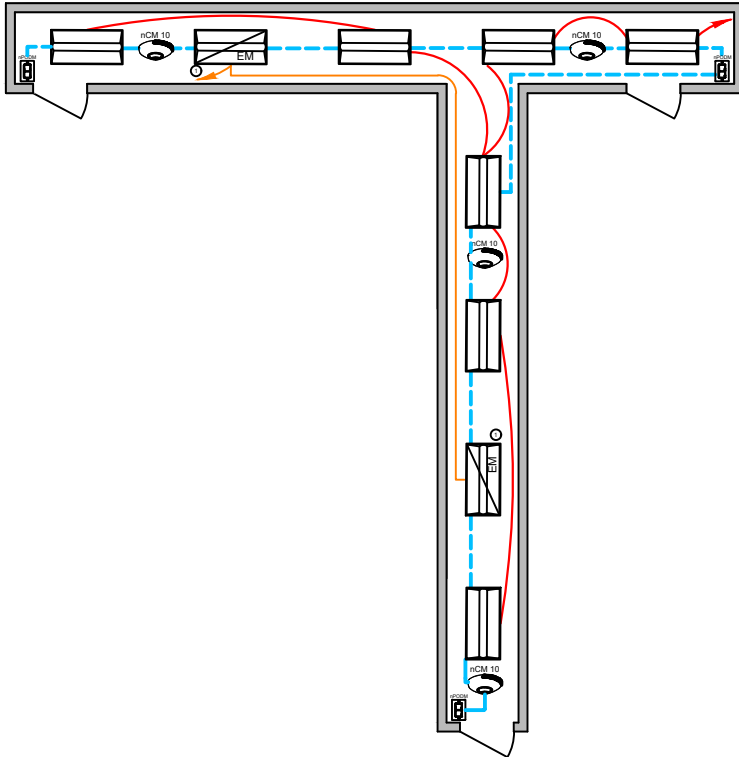


**SEQUENCE OF OPERATION:**

- LIGHTS**
- ALL LIGHTS ARE DIMMABLE
  - ALL FIXTURES CONTROLLED TOGETHER
  - ADJUSTABLE HIGH/LOW TRIM

- OCCUPANCY**
- LIGHTS AUTOMATICALLY GO TO FULL BRIGHT WHEN OCCUPIED
  - LIGHTS AUTOMATICALLY TURN OFF OR DROP TO OPTIONAL LOW DIM SETTING WHEN SPACE BECOMES VACANT

- ADDITIONAL OPTIONS:**
- SURFACE OR RECESSED MOUNT SENSORS ALSO AVAILABLE
  - SPACE / ZONE CAN BE CONNECTED TO nLIGHT BACKBONE TO ENABLE NET-WORK CONTROL OR TIME SCHEDULES (C405.2.2.1)
  - HVAC CONTROL AVAILABLE THROUGH SYSTEM-WIDE BACNET® INTERFACE OPTION ON THE ECLYPSE CONTROLLER OR THROUGH OCCUPANCY SENSOR AUXILIARY RELAY (AR) CONTACT OPTION



Some nLight enabled EM fixtures require a normal sense line connection. See fixture spec sheets for details.

DIAGRAM LEGEND	
	CAT-5e CABLE
	LINE VOLTAGE WIRES
	LINE POWER

BILL OF MATERIAL		
QTY	PRODUCT #	DESCRIPTION
7	SEE NOTE	nLIGHT WIRED ENABLED FIXTURE
2	SEE NOTE	nLIGHT WIRED ENABLED FIXTURE with EMG OPTION
3	nPODM	ON/OFF WALL POD
4	nCM10	OCCUPANCY SENSOR

**SUPPORTS THE FOLLOWING REQUIREMENTS:**

- FULL AUTO-OFF VIA OCCUPANCY SENSOR (C405.2.1.1)
- LOCAL SWITCH (C405.2.2.3)
- ENHANCED DIGITAL LIGHTING CONTROLS (C406.4)

**Note: Contact your local lighting agent for more information on nLight enabled fixtures. nLight enabled fixtures provide Luminaire Level Lighting Controls (LLLC), as specified in the WSEC CODE.**