

CA TITLE 24 2019 DESIGN GUIDE

WIRELESS OPEN OFFICE WITH 0-10V DIMMING FIXTURES



nLIGHT AIR

SEQUENCE OF OPERATION:

LIGHTS

- ALL LIGHTS ARE DIMMABLE
- FIXTURES ARE CONTROLLED BASED ON POWER PACK LINE VOLTAGE AND 0-10V WIRING
- MAXIMUM LEVEL CAN BE TASK TUNED TO ANY PERCENTAGE VIA PROGRAMMING

OCCUPANCY

- PARTIAL-ON OCCUPANCY SENSORS AUTOMATICALLY ACTIVATE BETWEEN 50-70% OF CONTROLLED LIGHTING POWER OR FIXTURES MUST BE TURNED ON MANUALLY
- PLUG LOAD TURNS ON AUTOMATICALLY
- FIXTURES AND PLUG LOAD AUTOMATICALLY TURN OFF WHEN ROOM BECOMES VACAN

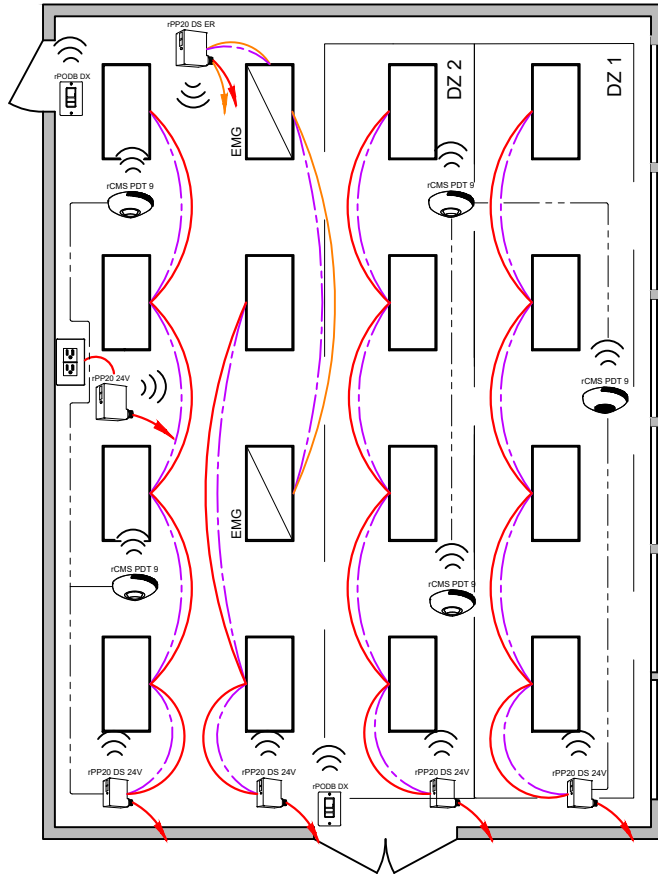
DAYLIGHT

- NOT REQUIRED IF ROOM HAS <24 FT². OF GLAZING OR LIGHTING LOAD < 120W IN THE SKYLIT AND THE SIDELIT DAYLIT ZONE
- SMOOTH CONTINUOUS DIMMING
- DAYLIGHT ZONES DEFINED BY RELAY PACKS MANUAL

- ON/OFF & RAISE/LOWER CONTROL OF LIGHTS

ADDITIONAL OPTIONS:

- ROOM CAN BE CONNECTED TO nLIGHT BACKBONE TO ENABLE NETWORK CONTROL, TIME SCHEDULES AND AUTOMATED DEMAND RESPONSE (OPENADR 2.0A)
- HVAC CONTROL AVAILABLE THROUGH SYSTEM-WIDE BACNET® INTERFACE OPTION ON THE ECLYPSE CONTROLLER OR THROUGH OCCUPANCY SENSOR AUXILIARY RELAY (AR) CONTACT OPTION
- WIRELESS FIXTURE EMBEDDED CONTROL AND OCCUPANCY/DAYLIGHTING SENSOR OPTIONS AVAILABLE, PLEASE SEE THE FIXTURE SPECIFICATION SHEET



| DIAGRAM LEGEND | |
|----------------|--------------------|
| | LOW VOLTAGE WIRES |
| | 0-10VDC WIRES |
| | LINE VOLTAGE WIRES |
| | LINE FEED |
| | EM FEED |

| BILL OF MATERIAL | | |
|------------------|-----------------|---|
| QTY | PRODUCT # | DESCRIPTION |
| 4 | rPP20 DS 24V G2 | RELAY PACK WITH 0-10V DIMMING OUTPUT |
| 1 | rPP20 24V G2 | PLUG LOAD RELAY PACK |
| 1 | rPP20 DS ER G2 | EMERGENCY RELAY PACK w/ 0-10V DIMMING OUTPUTS |
| 2 | rPODB DX G2 | ON/OFF & RAISE/LOWER WALL POD |
| 5 | rCMS PDT 9 G2 | OCCUPANCY and DAYLIGHT SENSOR |

SUPPORTS THE FOLLOWING REQUIREMENTS:

- ✓ FULL AUTO-OFF VIA OCCUPANCY SENSOR (SECTION 130.1c)
- ✓ AREA CONTROL (SECTION 130.1a)
- ✓ PLUG-LOAD CONTROL (SECTION 130.5d)
- ✓ MULTI-LEVEL/ DIMMING CONTROL (SECTION 130.1b)
- ✓ AUTOMATIC DEMAND RESPONSE (ADR) READY (SECTION 130.1e)
- ✓ LESS THAN 120W PRIMARY DAYLIGHT ZONE DO NOT REQUIRE DAYLIGHT HARVESTING (SECTION 130.1d)