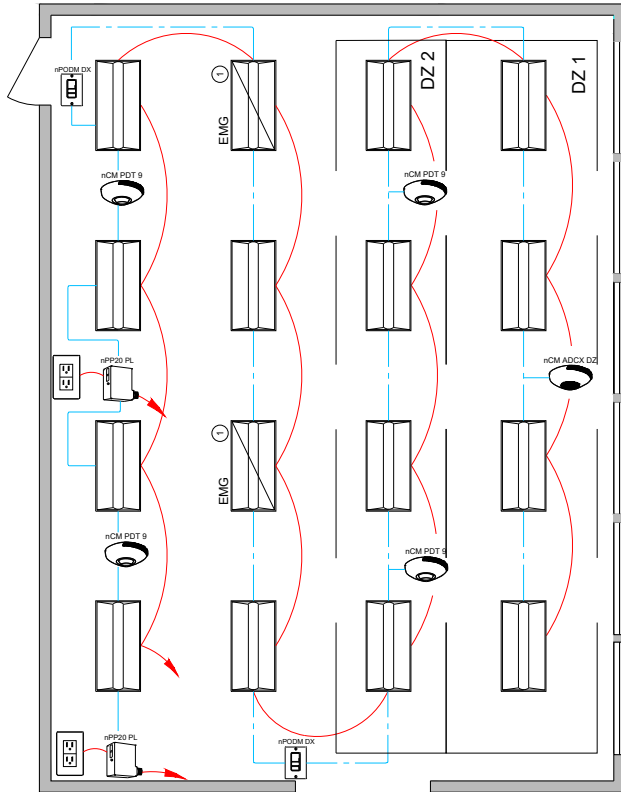


CA TITLE 24 2019 DESIGN GUIDE

OPEN OFFICE WITH nLIGHT ENABLED FIXTURES



① Some nLight enabled EMG fixtures require a normal sense line connection. See fixture spec sheets for details.

SEQUENCE OF OPERATION:

LIGHTS

- ALL LIGHTS ARE DIMMABLE
- FIXTURES ARE CONTROLLED BASED ON POWER PACK LINE VOLTAGE AND 0-10V WIRING
- MAXIMUM LEVEL CAN BE TASK TUNED TO ANY PERCENTAGE VIA PROGRAMMING

OCCUPANCY

- PARTIAL-ON OCCUPANCY SENSORS AUTOMATICALLY ACTIVATE BETWEEN 50-70% OF CONTROLLED LIGHTING POWER OR FIXTURES MUST BE TURNED ON MANUALLY
- PLUG LOAD TURNS ON AUTOMATICALLY
- FIXTURES AND PLUG LOAD AUTOMATICALLY TURN OFF WHEN ROOM BECOMES VACAN

DAYLIGHT

- NOT REQUIRED IF ROOM HAS <24 FT2. OF GLAZING OR LIGHTING LOAD < 120W IN THE SKYLIT AND THE SIDELIT DAYLIT ZONE
- SMOOTH CONTINUOUS DIMMING
- DAYLIGHT ZONES DEFINED BY RELAY PACKS

MANUAL

- ON/OFF & RAISE/LOWER CONTROL OF LIGHTS

ADDITIONAL OPTIONS:

- ROOM CAN BE CONNECTED TO NLIGHT BACKBONE TO ENABLE NETWORK CONTROL, TIME SCHEDULES AND AUTOMATED DEMAND RESPONSE (OPENADR 2.0A)
- HVAC CONTROL AVAILABLE THROUGH SYSTEM-WIDE BACNET® INTERFACE OPTION ON THE ECLYPSE® CONTROLLER
- WIRELESS FIXTURE EMBEDDED CONTROL AND OCCUPANCY/DAYLIGHTING SENSOR OPTIONS AVAILABLE, PLEASE SEE THE FIXTURE SPECIFICATION SHEET

DIAGRAM LEGEND	
	CAT-5e CABLE
	LINE VOLTAGE WIRES
	LINE FEED
	EM FEED

BILL OF MATERIAL		
QTY	PRODUCT #	DESCRIPTION
14	SEE NOTE	nLIGHT WIRED ENABLED FIXTURES
2	SEE NOTE	nLIGHT WIRED ENABLED FIXTURES with EMG OPTION
2	nPP20 PL	PLUG LOAD RELAY PACK
2	nPODM DX	ON/OFF & RAISE/LOWER WALL POD
4	nCM PDT 9	DUAL TECHNOLOGY OCCUPANCY SENSOR
1	nCM ADCX DZ	AUTOMATIC DIMMING PHOTOCELL w/ DUAL ZONE CONTROL

SUPPORTS THE FOLLOWING REQUIREMENTS:

- FULL AUTO-OFF VIA OCCUPANCY SENSOR (SECTION 130.1c)
- AREA CONTROL (SECTION 130.1a)
- PLUG-LOAD CONTROL (SECTION 130.5d)
- MULTI-LEVEL/ DIMMING CONTROL (SECTION 130.1b)
- AUTOMATIC DEMAND RESPONSE (ADR) READY (SECTION 130.1e)
- LESS THAN 120W PRIMARY DAYLIGHT ZONE DO NOT REQUIRE DAYLIGHT HARVESTING (SECTION 130.1d)

Note: Contact your local lighting agent for more information on nLight enabled fixtures