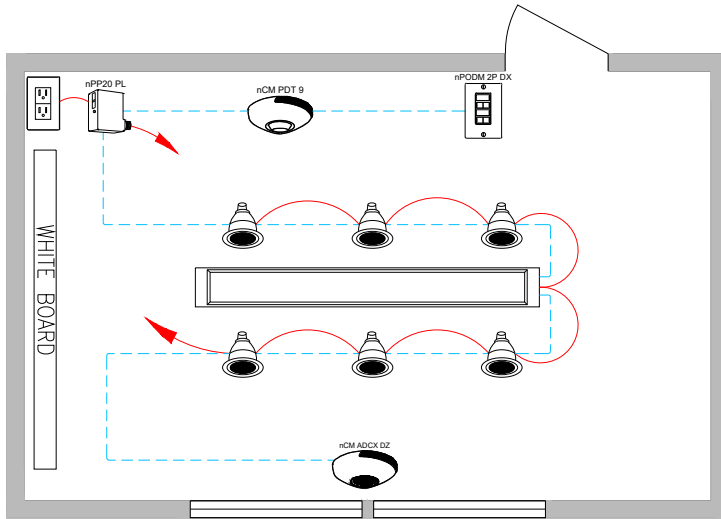


# CA TITLE 24 2019 DESIGN GUIDE

CONFERENCE ROOM WITH nLIGHT ENABLED FIXTURES



nLIGHT



### SEQUENCE OF OPERATION:

#### LIGHTS

- ALL LIGHTS ARE DIMMABLE
- ALL FIXTURES CAN BE CONTROLLED TOGETHER OR INDEPENDENTLY
- MAXIMUM LEVEL CAN BE TASK TUNED TO ANY PERCENTAGE VIA PROGRAMMING

#### OCCUPANCY

- PARTIAL-ON OCCUPANCY SENSORS AUTOMATICALLY ACTIVATE BETWEEN 50-70% OF CONTROLLED LIGHTING POWER OR FIXTURES MUST BE TURNED ON MANUALLY
- PLUG LOAD TURNS ON AUTOMATICALLY
- FIXTURES AND PLUG LOAD AUTOMATICALLY TURN OFF WHEN ROOM BECOMES VACAN

#### DAYLIGHT

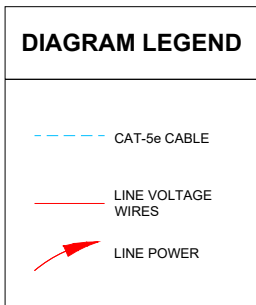
- NOT REQUIRED IF ROOM HAS <24 FT<sup>2</sup>. OF GLAZING OR LIGHTING LOAD < 120W IN THE SKYLIT AND THE SIDELIT DAYLIT ZONE
- SMOOTH CONTINUOUS DIMMING
- CUSTOM GROUPING OF FIXTURES INTO SEPARATE DAYLIGH ZONES (MAX.NUMBER OF ZONES =NUMBER OF FIXTURES)

#### MANUAL

- ON/OFF & RAISE/LOWER CONTROL OF TWO ZONES OF FIXTURES

#### ADDITIONAL OPTIONS:

- ROOM CAN BE CONNECTED TO NLIGHT BACKBONE TO ENABLE NETWORK CONTROL, TIME SCHEDULES AND AUTOMATED DEMAND RESPONSE (OPENADR 2.0A)
- HVAC CONTROL AVAILABLE THROUGH SYSTEM-WIDE BACNET® INTERFACE OPTION ON THE ECLYPSE® CONTROLLER
- WIRELESS FIXTURE EMBEDDED CONTROL AND OCCUPANCY/DAYLIGHTING SENSOR OPTIONS AVAILABLE, PLEASE SEE THE FIXTURE SPECIFICATION SHEET



### BILL OF MATERIAL

QTY	PRODUCT #	DESCRIPTION
6	SEE NOTE	nLIGHT WIRED ENABLED DOWNLIGHT FIXTURE
1	SEE NOTE	nLIGHT WIRED ENABLED LINEAR FIXTURE
1	nPP20 PL	PLUG LOAD RELAY PACK
1	nPODM 2P DX	2 POLE ON/OFF & RAISE/LOWER WALL POD
1	nCM PDT 9	DUAL TECHNOLOGY OCCUPANCY SENSOR
1	nCM ADCX DZ	AUTOMATIC DIMMING PHOTOCELL w/ DUAL ZONE CONTROL

### SUPPORTS THE FOLLOWING REQUIREMENTS:

- FULL AUTO-OFF VIA OCCUPANCY SENSOR (SECTION 130.1c)
- AREA CONTROL (SECTION 130.1a)
- PLUG-LOAD CONTROL (SECTION 130.5d)
- MULTI-LEVEL/ DIMMING CONTROL (SECTION 130.1b)
- AUTOMATIC DEMAND RESPONSE (ADR) READY (SECTION 130.1e)
- LESS THAN 120W PRIMARY DAYLIGHT ZONE DO NOT REQUIRE DAYLIGHT HARVESTING (SECTION 130.1d)

Note: Contact your local lighting agent for more information on nLight enabled fixtures