

SEQUENCE OF OPERATION:

LIGHTS

- ALL LIGHTS ARE DIMMABLE
- MAXIMUM LEVEL CAN BE LIMITED TO 80%
- A/V ZONE CAN BE PROGRAMMED TO CONTROL TWO FIXTURES IN FRONT OF THE WHITEBOARD

OCCUPANCY

- LIGHTS MUST BE TURNED ON MANUALLY (OR OPTIONALLY CAN BE CONFIGURED TO COME ON AUTOMATICALLY TO 50%)
- PLUG LOAD TURNS ON AUTOMATICALLY
- LIGHTS AUTOMATICALLY TURN OFF WHEN ROOM BECOMES VACANT

DAYLIGHT

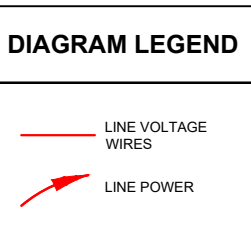
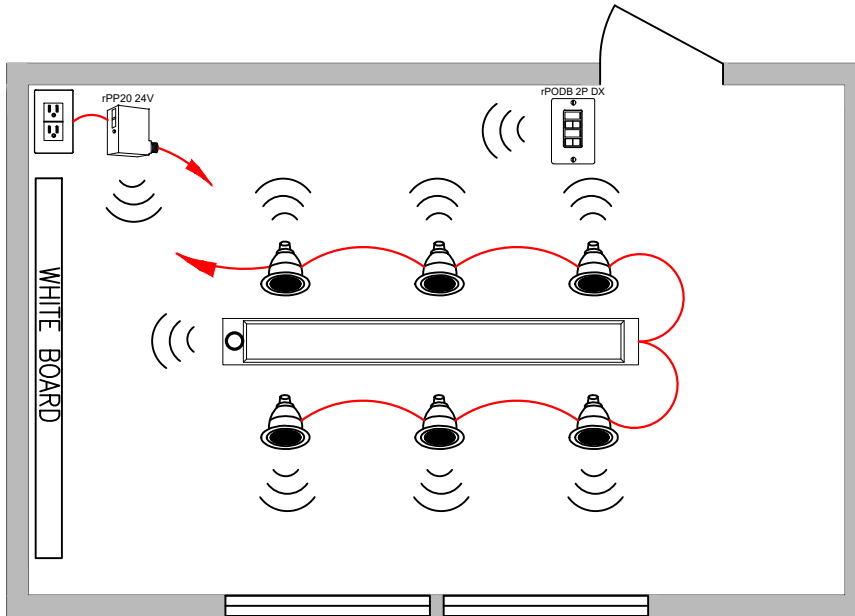
- SMOOTH CONTINUOUS DIMMING
- CUSTOM GROUPING OF FIXTURES INTO SEPARATE DAYLIGHT ZONES
- NOT REQUIRED FOR AREAS WITHOUT WINDOWS OR HAVE SIDE LIT LOAD < 150W

MANUAL

- ON/OFF & RAISE/LOWER CONTROL OF TWO ZONES
- OPTIONAL 4 SCENE CONTROL

ADDITIONAL OPTIONS:

- ROOM CAN BE CONNECTED TO nLIGHT BACKBONE TO ENABLE NETWORK CONTROL INCLUDING TIME BASED CONTROLS AND INTEGRATION WITH BUILDING MANAGEMENT SYSTEMS.
- HVAC CONTROL AVAILABLE THROUGH SYSTEM-WIDE BACNET INTERFACE OPTION ON ECLYPSE CONTROLLER.
- FOR EMERGENCY LIGHTING CONTROL ADD A rPP20 D ER G2 PACK OR nLIGHT AIR ENABLED



BILL OF MATERIAL		
QTY	PRODUCT #	DESCRIPTION
7	VARIES	nLIGHT AIR ENABLED FIXTURE
1	rPODB 2P DX G2	2 POLE ON/OFF & RAISE/LOWER WALL POD
1	rPP20 24V G2	PLUG LOAD RELAY PACK

SUPPORTS THE FOLLOWING REQUIREMENTS:

- ✓ FULL AUTO-OFF VIA OCCUPANCY SENSOR
- ✓ LOCAL SWITCH
- ✓ MULTI-LEVEL/ DIMMING CONTROL
- ✓ PLUG-LOAD CONTROL
- ✓ MULTI-LEVEL DAYLIGHT CONTROL