

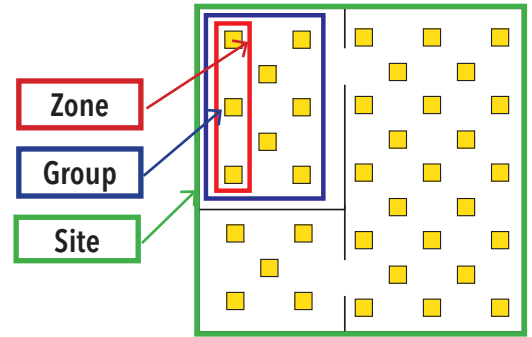
nLight® AIR Quick Start Guide

The 5 C's of nLight AIR Installation and Startup



Definitions

- Zone: One or more devices that have common programming. A device can be in multiple Zones.
- Group: A set of devices and one or more Zones that are intended to function together. Typically used for room-level programming.
- Site: A set of groups, zones, and devices that reside in a certain building or address.



Construction

Install and energize the nLight AIR devices (fixtures and wall switches). At least one group of nLight AIR devices must be installed prior to starting the Configure step.

Create

For new users, use the Clarity™ mobile app to create a User ID (email address) and password. Then, create your Site in Clarity by entering the required information about the Site. This may be completed before installation of the devices. It is recommended that you share the Site with others so they may assist with startup, on-going maintenance, or future re-purposing (see Collaborate on next page).

An internet connection is required to log in and create a Site within Clarity.

Create an account:

1. Create a login by touching **Sign up**

2. Insert email address & touch **Send verification code**

3. Check email for verification code

4. Paste code from email & touch **Verify code**

5. Complete entering sign-up information

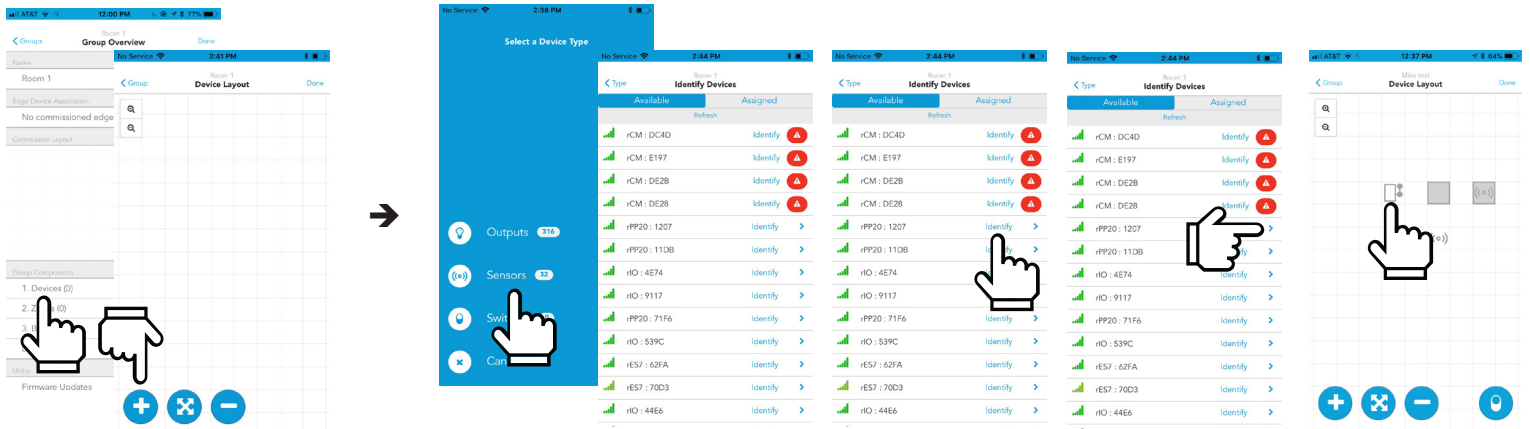
Create a Site:

1. Touch the **+** to create a Site

2. Enter Site details & touch **Create**

Configure

Use the Clarity mobile app to identify a group of devices and place them on the grid.



Select Devices, then touch the **+**

First select a Device Type (we selected **Sensors**). Once the devices populate, touch **Identify** and the device will blink to identify itself.

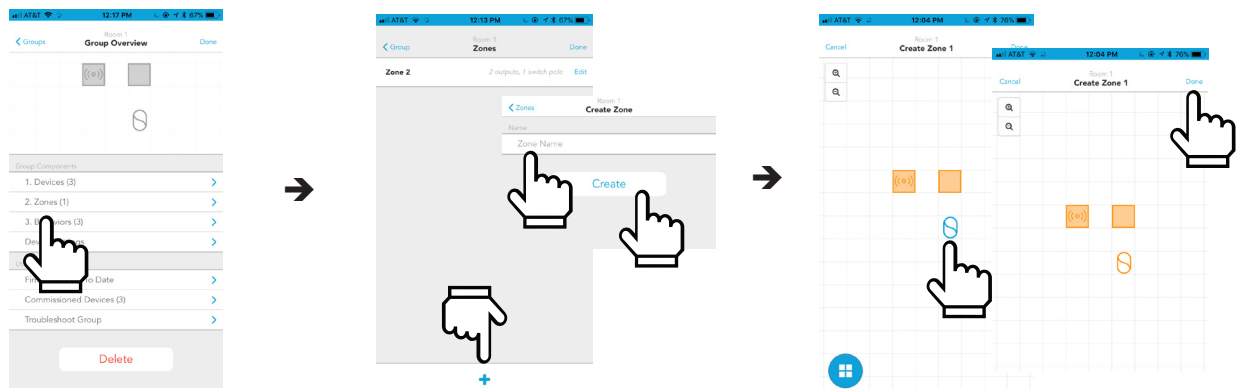
Next, touch the arrow **>** and place the device on the grid that appears.

*Note: To identify a switch, first press any button on the physical switch(s) to wake. Then touch device type **Switches**, and the list of awake switches will populate.*

Customize

Use the Clarity mobile app to create zones of control and define behaviors for each. Each device can be in one or more zones

Create a Zone:

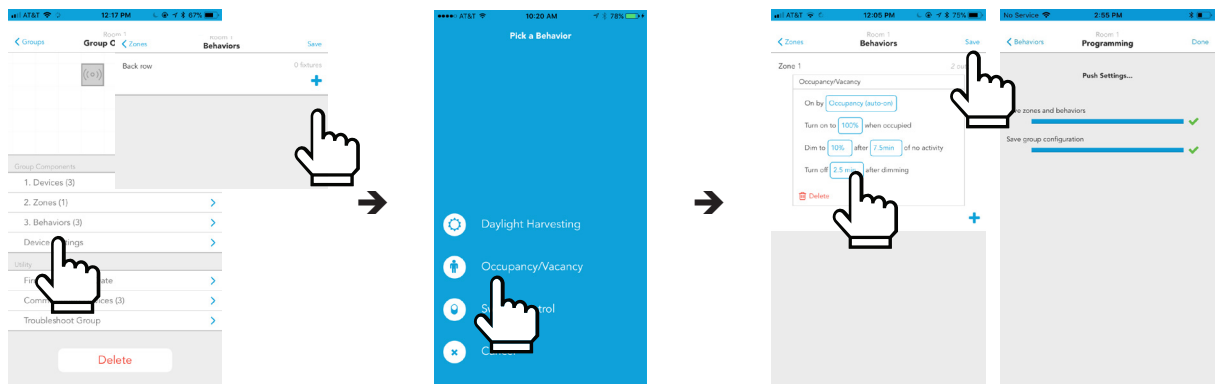


Select **Zones**

Touch the **+**
Enter Zone name then touch **Create**

Touch devices to add them to the Zone, then touch **Done**

Program Zone Behaviors:



Select **Behaviors** then touch the **+**

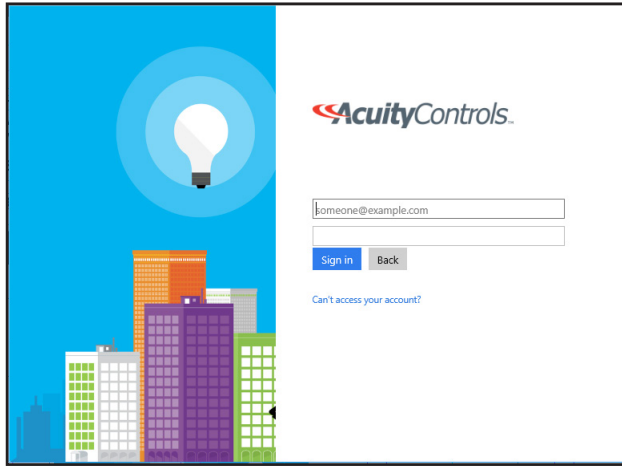
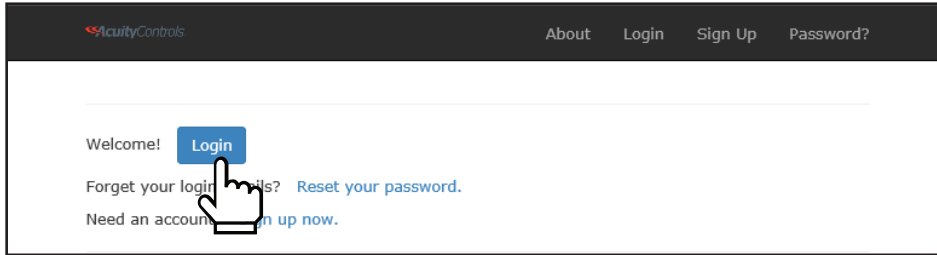
Select a Behavior

Define Behaviors for each Zone & Touch **Save**

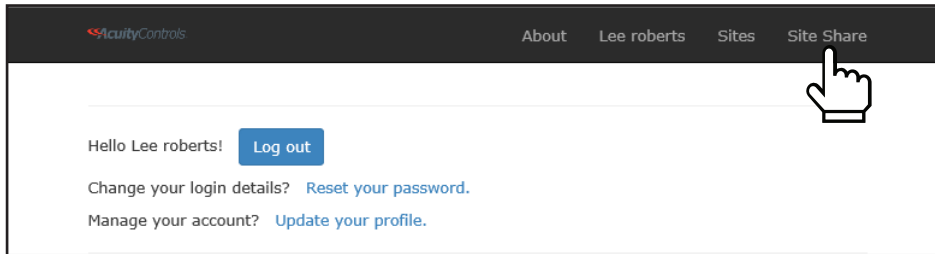
Collaborate

Using the login and password you created for the Clairity mobile app, log into air.acuitynext.com to share your site with your customer or colleagues. You may share the site with the end user for their ongoing maintenance or with colleagues so they may assist with support. Choose site share in the header, select the site to share, and add users to receive access.

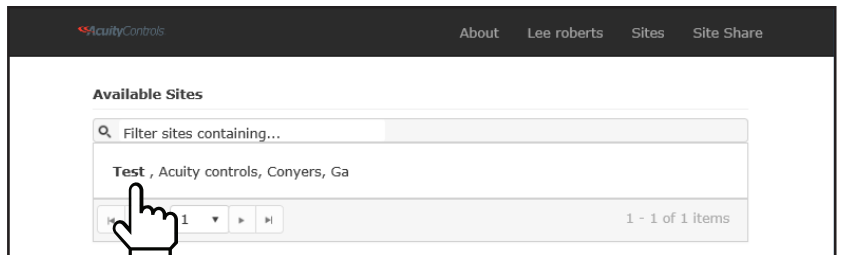
Step 1. Log in to air.acuitynext.com using the email address and password you created to login to the Clairity Mobile App



Step 2. Click "Site Share"



Step 3. Select the site to share by moving through the list or, if you know the site name, using the **Search** function



Step 4. To share a site with a User, enter the User's email address into the Search bar.

NOTE: Sharing sites requires that all Users already have created a Clairity account.

