

Pole RFA Reference Guide

This guide can help you determine if a pole requires a quote for a custom modification



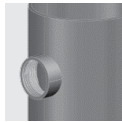
RFA Required Modifications

Includes any combination of 3 or more of the below provisions or mounted items*

Standard Option Provisions:



Festoons
(FDL)



Couplings
(CPL)



Threaded
Nipples
(NPL)



Extra
Handholes
(EHH)

Non-Standard Provisions:

Band mounted cameras (CAM, Nomenclature only used if item is not using a CPL, NPL or FDL for mounting)

Band mounted speakers (SPK, Nomenclature only used if item is not using a CPL, NPL or FDL for mounting)

Wireless access points (WAP, Nomenclature only used if item is not using a CPL, NPL or FDL for mounting)

Options/Features not on Specification Sheets or Other Special Mounting Provisions*

Custom Provisions:



Banner Arms
(BARM)*



Cables, Catenary
Lights and Eye Bolts
(EYB)

Non-Standard Drillings:

(EX. one, 4" hole OR two, 1" holes horizontally side by side. No nomenclature needed. Excludes competitor drillings)

Non-Cataloged Brackets or Arms*

The dimensions or desired options needed for the bracket, are not listed on the specification sheet.

Extended Finish Warranty for Aluminum or Fiberglass

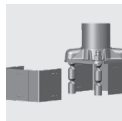
Options include extension of finish and/or structural warranties to 3 or 5 years. Can only be provided from date of shipment.

Custom Anchorage and Bases*

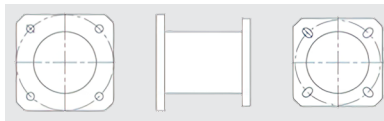
Special Bases & Anchor Bolts:



Transformer Base
(TBASE)



Breakaway Anchor
Bolts/Couplings
(BKYCPL)



Base Plate Adaptor
(X TO X BPADAPTER)

Modified Bolt Circle (MODBC):

Custom base plate to match the specified bolt circle of existing anchorage.

*Requires the [Wind Load, Anchorage Verification & RFA Form](#) to approve.

Non-RFA Required Modifications

Drillings

Competitor and Special Drill Patterns:

Must add SPDRILL nomenclature in place of standard drill mount options. Drill pattern must be provided upon order.
Send via email to Product Support Outdoor with order number.

Example nomenclature:

SPDRILL19 = Special drilling at 1 @ 90
SPDRILL28 = Special drilling at 2 @ 180

Arm Drill Patterns:

In place of standard drill mount options, use the arm series name.

Example nomenclature:

AMACE28 = drilling at 2 @ 180
SMAC39 = drilling at 3 @ 90

Finishes - may add up to 2 weeks to lead time

Paint over Galvanized (Steel only):

This finish is now standard for all Steel poles. Add paint finish first, followed by GALV. AQD will assist with pricing.

Example nomenclature:

SSS 25 4C DM19AS DDBXD GALV

Extended Finish Warranty:

For a 3 Year steel finish warranty, add VP30 to the nomenclature. AQD will assist with pricing.

Example nomenclature:

SSS 25 4C DM19AS VP30 DDBXD

For a 5 Year steel finish warranty, add VP53 to the nomenclature. AQD will assist with pricing.

Example nomenclature:

RSA 16 5G DM28AS VP53A DBLXD

For a 3 Year aluminum finish warranty, add VP33A to the nomenclature. AQD will assist with pricing.

Example nomenclature:

If RAL 3016 is needed, use DRDS:
SSS 30 6G DM19RAD DRDS

For a 5 Year aluminum finish warranty, add VP53A to the nomenclature. AQD will assist with pricing.

RAL Colors:

In place of RAL ####, use four-letter Lithonia designated nomenclature. This can be found on the [Acuity Architectural RAL Color Guide](#).

Custom Colors:

Follows the same customer care [custom color process](#) as luminaires.

Other

Cutting Pole to Specified Height:

All poles can be cut to specified height in increments of 3". Use the format x'-x" in pole description for height. However, we cannot make a pole taller. The desired pole height cannot be greater than the maximum height for the specified shaft size listed in the "Technical Data" chart.

Example nomenclature:

Pole needs to be 22' and 6".
RSS 22-6 5B T20 DNAXD

Cable Strain Relief or J-Hooks (JH):

Height and orientation must be specified in nomenclature in the same manner as other provisions (EHH, FDL, NPL, CPL).

Example nomenclature:

SSS 15 4G DM29AS JH14A DNAXD

Tenon Heights not on Specification Sheet:

Nomenclature to be specified as TaXb, where "a" is the Tenon outer diameter and "b" is the height.

Example nomenclature:

T3.25X2, Tenon diameter is 3.25" and height is 2"
RSS 25 4-5B T3.25X2 DNAXD

Special Wind Loading Calculations:

Request for wind loading calculations do not follow the RFA process. Fill out the [Wind Load, Anchorage Verification & RFA Form](#) and send via email to Product Support Outdoor. Passing calculations will be shared. In the case of non-passing calculations, alternative pole sizes will be provided instead.

Set of PE Stamps - Drawings and Calculations:

Preliminary calculations are required prior to ordering a set of PE stamps. Complete the [Wind Load, Anchorage Verification & RFA Form](#) and send via email to Product Support Outdoor. If the pole passes, the PE stamp set must be ordered as a separate line item on the same order as the poles. Use description PE STAMP VAL for Steel or PE STAMP VLEX for Aluminum. PE stamps will not be provided until there is an order in house and there is a fee. PE stamps will not be provided if the pole fails preliminary calculations. For more information on the PE Stamp process, check out the [FAQ](#).