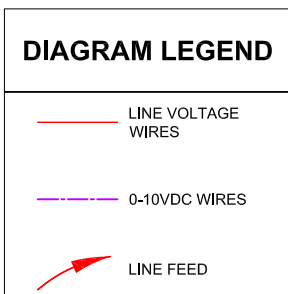
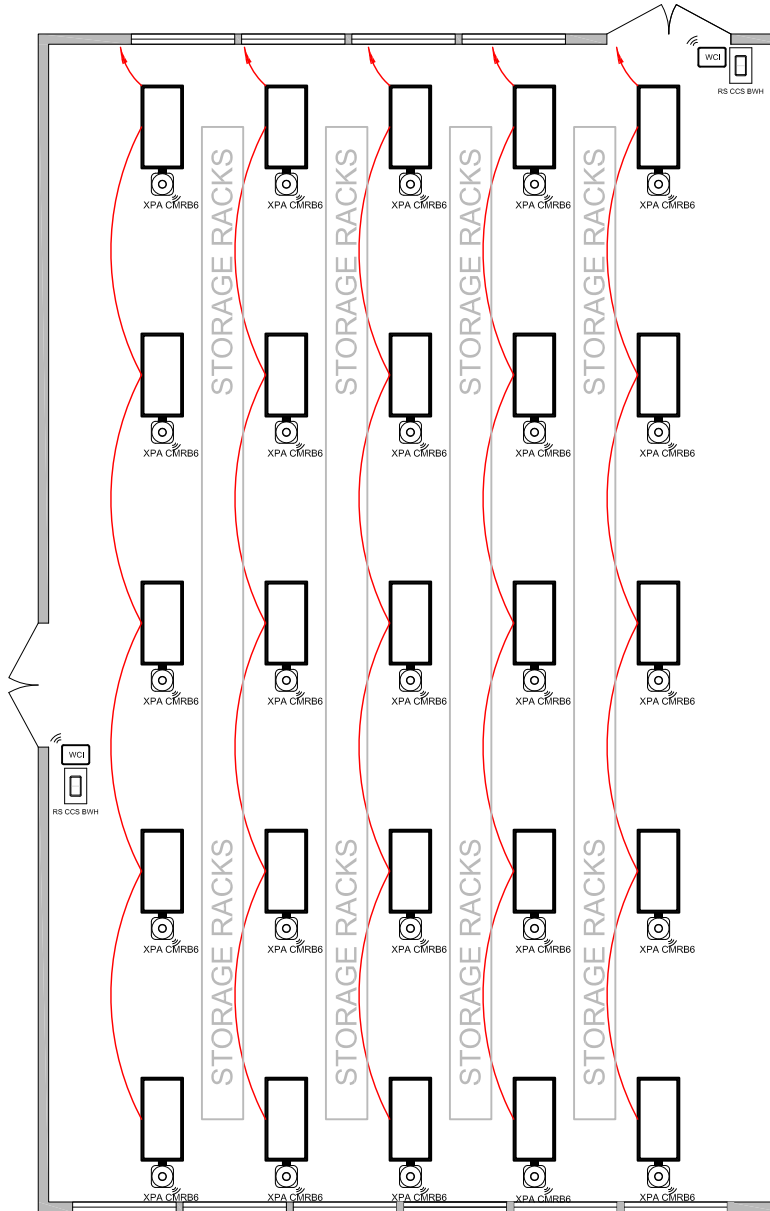


WAREHOUSE



BILL OF MATERIAL		
QTY	PRODUCT #	DESCRIPTION
25	XPA CMRB6	0-10V DIMMING MODULE WITH INTEGRAL OCCUPANCY SENSOR & PHOTOCELL
2	RS CCS BWH	ANALOG ROCKER SWITCH ON/OFF & RAISE/LOWER
1	XPA WCI	WALL CONTROL INTERFACE
1	XPA GATEWAY	xPoint WIRELESS GATEWAY