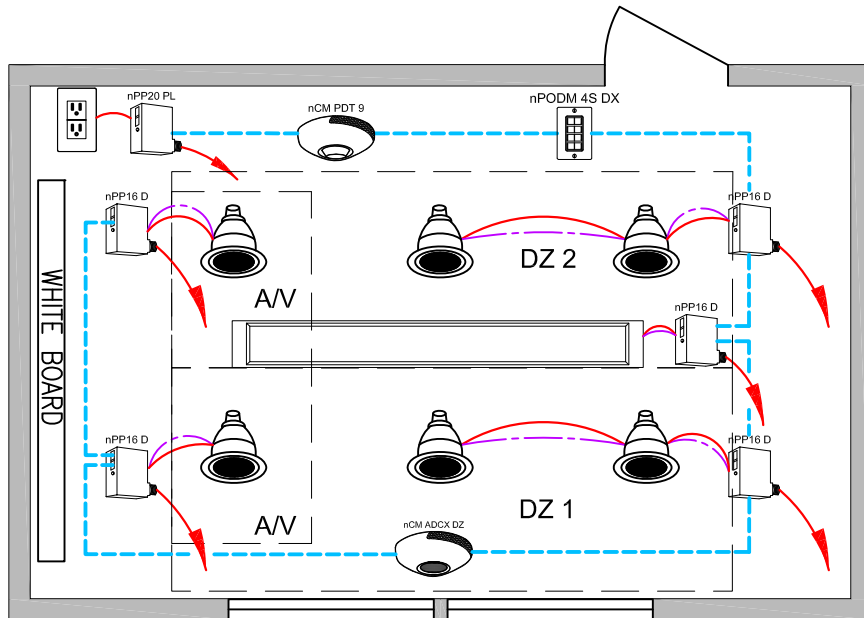


CA TITLE 24 2016 DESIGN GUIDE

CONFERENCE ROOM WITH 0-10V DIMMING FIXTURES



SEQUENCE OF OPERATION:

LIGHTS

- ALL LIGHTS ARE DIMMABLE
- EACH ROW CONTROLLED INDEPENDENTLY
- MAXIMUM LEVEL CAN BE LIMITED TO 80%
- OPTIONAL AUTOMATIC LUMEN COMPENSATION

OCCUPANCY

- LIGHTS MUST BE TURNED ON MANUALLY (OR CAN BE RECONFIGURED TO BE AUTO ON TO 50%-70%)
- LIGHTS AUTOMATICALLY TURN OFF WHEN ROOM BECOMES VACANT
- PLUG LOAD AUTO ON/OFF

DAYLIGHT

- SMOOTH CONTINUOUS DIMMING
- DAYLIGHT ZONES DEFINED BY ROWS
- NOT REQUIRED IF ROOM HAS <24sqft OF GLAZING OR LIGHTING LOADS <120w, IN THE SKYLIT AND THE SIDELIT DAYLIT ZONE

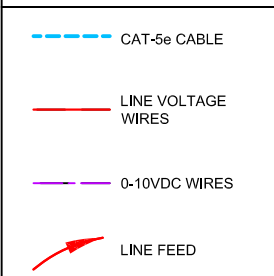
MANUAL

- ON/OFF & RAISE/LOWER CONTROL OF EACH ROW

ADDITIONAL OPTIONS:

- SURFACE OR RECESSED MOUNT SENSORS ALSO AVAILABLE
- MODEL nPP16D PA & PA70 FOR DEFAULT AUTO-ON TO 50% OR 70%
- ROOM CAN BE CONNECTED TO nLIGHT BACKBONE TO ENABLE NET-WORK CONTROL OR ADR (AUTOMATIC DEMAND RESPONSE)
- FOR EMERGENCY LIGHTING CONTROL ADD A NPP16 D ER
- CONTROL HVAC SYSTEMS via AN OPTIONAL RELAY "AR" OR THROUGH THE BACNET ECLYPSE CONTROLLER

DIAGRAM LEGEND



BILL OF MATERIAL

QTY	PRODUCT #	DESCRIPTION
5	nPP16 D	RELAY MODULE WITH 0-10V DIMMING OUTPUT
1	nPP20 PL	PLUG LOAD RELAY PACK
1	nPODM 4S DX	4 SCENE CONTROLLER w/ ON/OFF & RAISE/LOWER
1	nCM PDT 9	DUAL TECHNOLOGY OCCUPANCY SENSOR
1	nCM ADCX DZ	AUTOMATIC DIMMING PHOTOCELL w/ DUAL ZONE CONTROL

SUPPORTS THE FOLLOWING REQUIREMENTS:

- ✓ FULL AUTO-OFF VIA OCCUPANCY SENSOR (SECTION 130.1c)
- ✓ LOCAL SWITCH (SECTION 130.1a)
- ✓ PLUG-LOAD CONTROL (SECTION 130.5d)
- ✓ MULTI-LEVEL/ DIMMING CONTROL (SECTION 130.1b)
- ✓ AUTOMATIC DEMAND RESPONSE (ADR) READY (SECTION 130.1e)
- ✓ LESS THAN 120W PRIMARY DAYLIGHT ZONE DO NOT REQUIRE DAYLIGHT HARVESTING (SECTION 130.1d)