

# WALL MOUNTED OCCUPANCY SENSOR INSTALLATION GUIDE

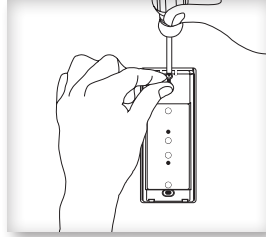
The mounting plate can be installed flush to the wall or angled in a corner.

NOTE: It is often easier to link the sensor before it is mounted on the wall. Refer to the Linking section.

1. Remove the mounting plate from the sensor assembly by pressing the release tab located on the top of the sensor.
2. Decide which of the two installation options is appropriate:

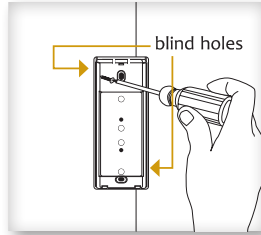
## A. Flush to the Wall

- i. Orient the mounting plate using the pencil marks. Mark the two mounting screw drill points.
- ii. Drill two holes with a 3/16" bit and insert wall anchors.
- iii. Insert the first screw loosely and level the mounting plate.
- iv. Insert the 2nd screw then hand-tighten the 1st screw.

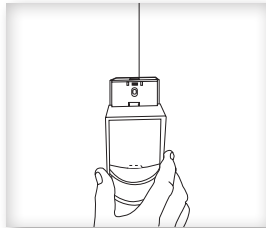
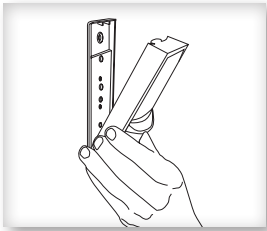


## B. Angled in a Corner

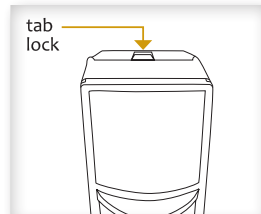
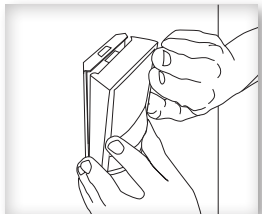
- i. Orient the mounting plate using the pencil marks.
- ii. Carefully drill through two of the four blind holes on the angled sides of the mounting plate (one on each side).
- iii. Mark the two mounting screw drill points and drill two pilot holes with a 3/16" drill bit and insert the wall anchors.
- iv. Insert the two screws and hand-tighten them.



3. Fit the sensor into the groove at the bottom of the mounting plate and close the top.



The sensor snaps into the tab at the top.



4. Confirm the sensor is properly positioned to detect motion and has sufficient light to operate, see the See Walk Test and See Light Test sections.

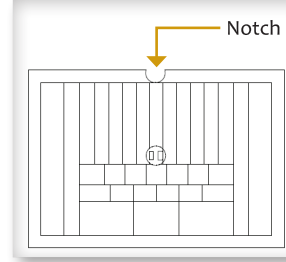
## Changing the Lens

The Occupancy Sensor package contains two lenses: a wide angle lens and a long range lens. The wide angle lens is installed by default and can be distinguished from the long range lens by the pattern.

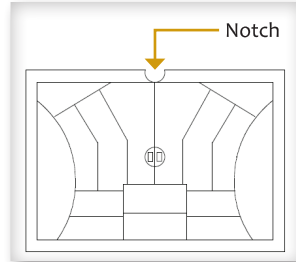
NOTE: Ensure smooth side of lens faces out.

### Lens Patterns

Wide Angle Lens

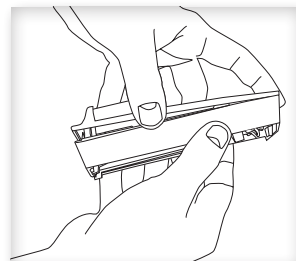
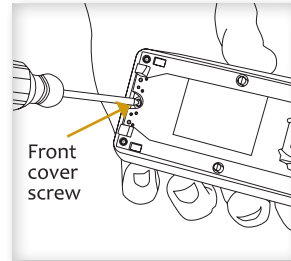


Long Range Lens

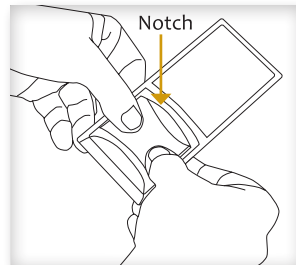


To change the lens:

1. If the sensor is mounted, press the top tab and remove it from the mounting plate.
2. Unscrew the small screw on the back at the bottom and remove the front cover.

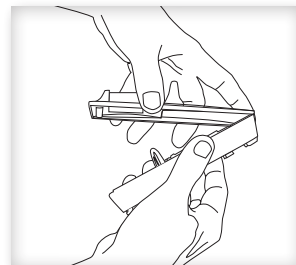


3. Remove the installed lens by gently squeezing it to ease one side out of its groove, and then the other.
4. Insert the lens you want to use by aligning the notch with the top on the front cover. Orient the smooth side facing out, and the textured side facing the sensor.



5. Hold both edges of the lens, flex it gently and push until it pops into the grooves. Make sure the edges are flush.  
NOTE: If the lens is out of position, the sensor will not detect activity properly.

6. Replace the top edge of the front cover and then close it on the sensor. Ensure antenna is properly seated before replacing the front cover.



7. Replace the bottom screw and remount sensor on the plate.

# CEILING MOUNTED OCCUPANCY SENSOR INSTALLATION GUIDE

## PAIR & PLAY TECHNOLOGY

STEP 1: Enter pairing mode. Double tap the xCella Remote Module user button to enter Override mode, then double tap again to enter Pairing mode. The Remote Module LED will blink rapidly.

Remote Module  
user button



Normal  
LED: 1/2 second blink

Double tap

Override  
LED: 2 second blink

Double tap

Pairing  
LED: 1/4 second blink

### Notes:

- The relay blinks once after each pairing and twice after unpairing.
- The Module stays in pairing mode for 30 seconds after each pairing is complete.

STEP 2: Send sensor pairing commands by pressing the menu (non-indented) button once<sup>1</sup>. The Remote Module's relay will cycle once (light fixtures blink) each time a switch or sensor is successfully paired.



Press Menu (non-indented)  
button once

Sending the pairing command a second time will unpair the switch from the Remote Module. The relay will cycle twice after a sensor or switch is unpaired.

STEP 3: Return to normal mode by double tapping the xCella Remote Module button once.

### NOTES:

1. Up to 16 total switches and sensors can be paired to an xCella Remote Module.