

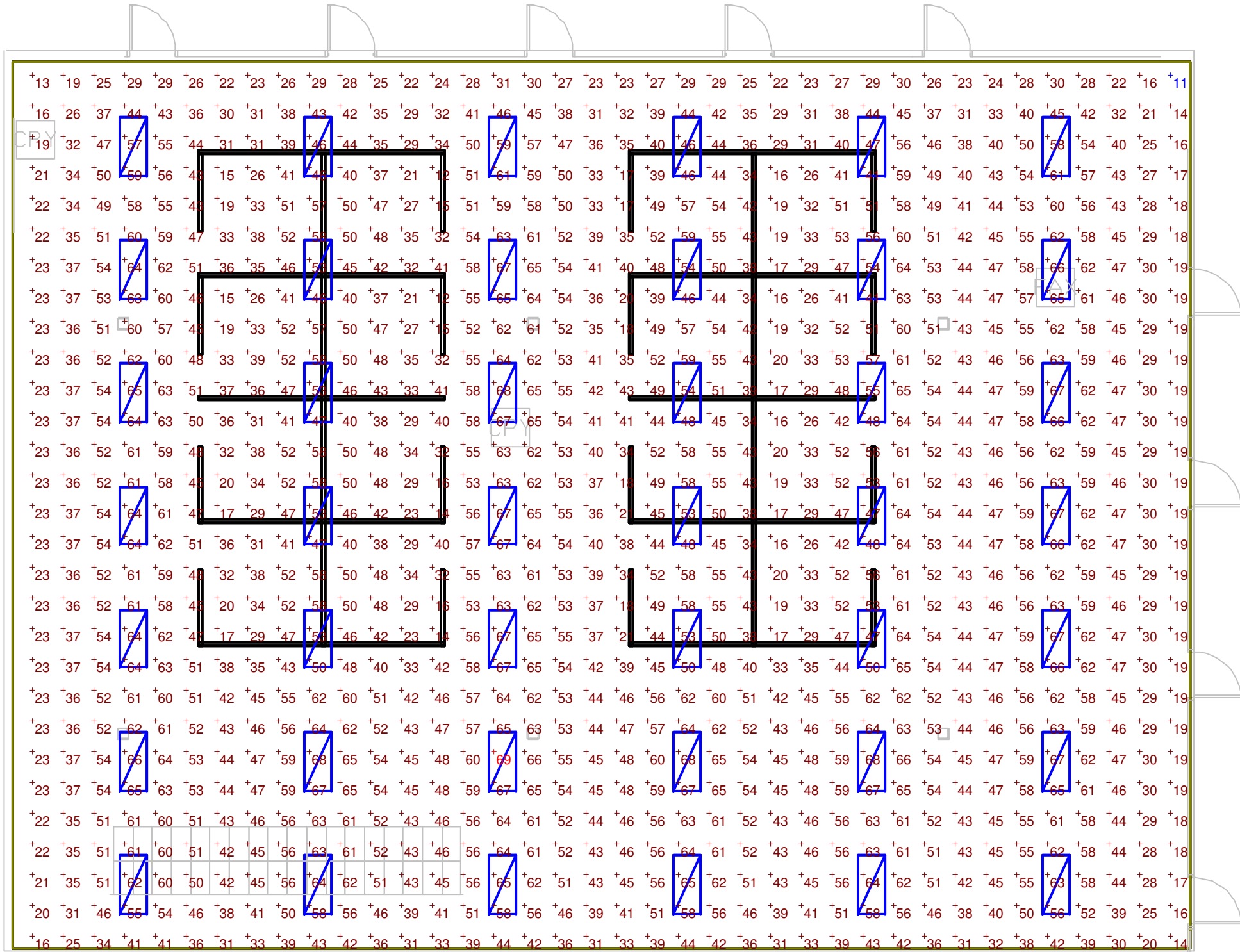
LUMINAIRE SCHEDULE									
Symbol	Label	Qty	Catalog Number	Description	Lamp	File	Lumens	LLF	Watts
☒	B	42	2SP5 G 3 28 A12125 GEB 10PS	SP5 SPECIFICATION PREMIUM TROFFER, 2'X4'; THREE LAMP T5 28W, ACRYLIC PRISMATIC LENS WITH A12125 PATTERN	THREE 28 WATT T5 LINEAR FLUORESCENT	2SP5_G_3_28 _A12125_GEB _10PS.ies	2610	0.75	72

NOTES

1. Readings shown are in units of maintained footcandles.
2. Total light loss factor = See luminaire schedule
3. Test plane = 2.5' aff
4. Ceiling height = 9' aff
5. Fixture mounting height = 9' aff
6. Fixture spacing = 12' X 8' Centers.
7. Reflectance = 80/50/20
8. This photometrics layout was calculated using specific criteria, any deviation from stated parameters will effect actual performance.
9. These lighting calculations are not a substitute for independent engineering analysis of lighting system suitability and safety.
10. Partitions= 5.5' high, 30% reflectance.

STATISTICS						
Description	Symbol	Avg	Max	Min	Max/Min	Avg/Min
large open office area	+	45 fc	69 fc	11 fc	6.3:1	4.1:1

POWER DENSITY STATISTICS				
Name	# Luminaires	Total Watts	Area	Density
Power Density Zone # 1	42	3024.00 W	4412.29 ft ²	0.69 W/ft ²



Plan View
Scale 1" = 8'

Calculated values include direct and interreflected components.