

LUMINAIRE SCHEDULE							
Symbol	Label	Qty	Catalog Number	Description	Lamp	File	Lumens LLF Watts
E		40	VAP 232 WD	4' POLYCARBONATE ENCLOSURE FOR (2) T8 LAMPS. WIDE DISTRIBUTION SPECULAR REFLECTOR	TWO 32-WATT LINEAR FLUORESCENT T8, HORIZONTAL POS.	VAP_232_WD.ies	2800 0.85 53.2

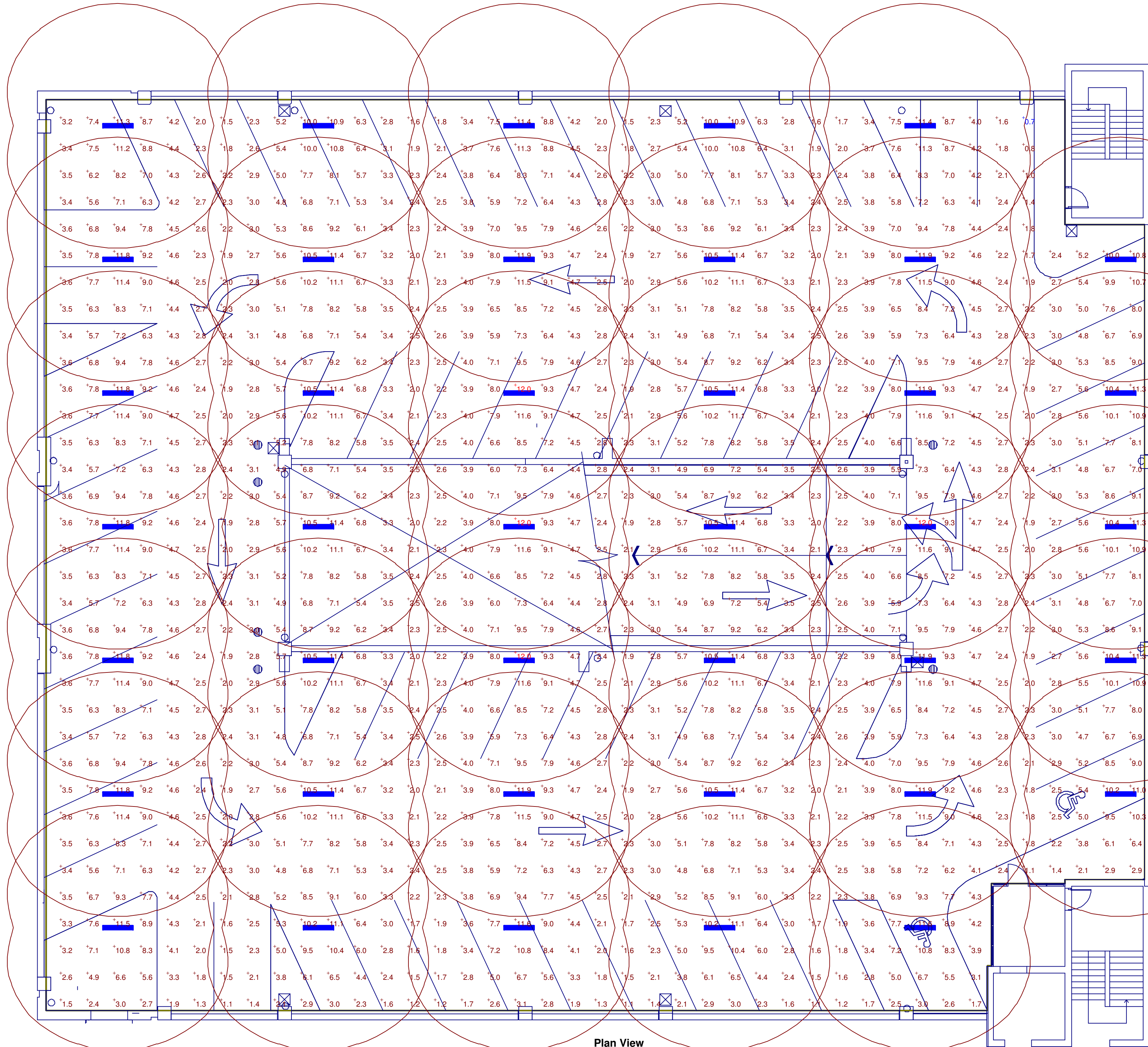
STATISTICS						
Description	Symbol	Avg	Max	Min	Max/Min	Avg/Min
area summary@floor	+	5.2 fc	12.0 fc	0.7 fc	17.1:1	7.4:1

LUMINAIRE LOCATIONS											
No.	Label	X	Location Y	Z	MH	Orientation	Tilt	X	Aim Y	Z	
1	E	12.0	13.8	8.5	8.5	90.0	0.0	12.0	13.8	0.0	
2	E	42.0	13.8	8.5	8.5	90.0	0.0	42.0	13.8	0.0	
3	E	72.0	13.8	8.5	8.5	90.0	0.0	72.0	13.8	0.0	
4	E	102.0	13.8	8.5	8.5	90.0	0.0	102.0	13.8	0.0	
5	E	132.0	13.8	8.5	8.5	90.0	0.0	132.0	13.8	0.0	
6	E	12.0	33.8	8.5	8.5	90.0	0.0	12.0	33.8	0.0	
7	E	42.0	33.8	8.5	8.5	90.0	0.0	42.0	33.8	0.0	
8	E	72.0	33.8	8.5	8.5	90.0	0.0	72.0	33.8	0.0	
9	E	102.0	33.8	8.5	8.5	90.0	0.0	102.0	33.8	0.0	
10	E	132.0	33.8	8.5	8.5	90.0	0.0	132.0	33.8	0.0	
11	E	162.0	33.8	8.5	8.5	90.0	0.0	162.0	33.8	0.0	
12	E	12.0	53.8	8.5	8.5	90.0	0.0	12.0	53.8	0.0	
13	E	42.0	53.8	8.5	8.5	90.0	0.0	42.0	53.8	0.0	
14	E	72.0	53.8	8.5	8.5	90.0	0.0	72.0	53.8	0.0	
15	E	102.0	53.8	8.5	8.5	90.0	0.0	102.0	53.8	0.0	
16	E	132.0	53.8	8.5	8.5	90.0	0.0	132.0	53.8	0.0	
17	E	162.0	53.8	8.5	8.5	90.0	0.0	162.0	53.8	0.0	
18	E	12.0	73.8	8.5	8.5	90.0	0.0	12.0	73.8	0.0	
19	E	42.0	73.8	8.5	8.5	90.0	0.0	42.0	73.8	0.0	
20	E	72.0	73.8	8.5	8.5	90.0	0.0	72.0	73.8	0.0	
21	E	102.0	73.8	8.5	8.5	90.0	0.0	102.0	73.8	0.0	
22	E	132.0	73.8	8.5	8.5	90.0	0.0	132.0	73.8	0.0	
23	E	162.0	73.8	8.5	8.5	90.0	0.0	162.0	73.8	0.0	
24	E	12.0	93.8	8.5	8.5	90.0	0.0	12.0	93.8	0.0	
25	E	42.0	93.8	8.5	8.5	90.0	0.0	42.0	93.8	0.0	
26	E	72.0	93.8	8.5	8.5	90.0	0.0	72.0	93.8	0.0	
27	E	102.0	93.8	8.5	8.5	90.0	0.0	102.0	93.8	0.0	
28	E	132.0	93.8	8.5	8.5	90.0	0.0	132.0	93.8	0.0	
29	E	162.0	93.8	8.5	8.5	90.0	0.0	162.0	93.8	0.0	
30	E	12.0	113.8	8.5	8.5	90.0	0.0	12.0	113.8	0.0	
31	E	42.0	113.8	8.5	8.5	90.0	0.0	42.0	113.8	0.0	
32	E	72.0	113.8	8.5	8.5	90.0	0.0	72.0	113.8	0.0	
33	E	102.0	113.8	8.5	8.5	90.0	0.0	102.0	113.8	0.0	
34	E	132.0	113.8	8.5	8.5	90.0	0.0	132.0	113.8	0.0	
35	E	162.0	113.8	8.5	8.5	90.0	0.0	162.0	113.8	0.0	
36	E	12.0	133.8	8.5	8.5	90.0	0.0	12.0	133.8	0.0	
37	E	42.0	133.8	8.5	8.5	90.0	0.0	42.0	133.8	0.0	
38	E	72.0	133.8	8.5	8.5	90.0	0.0	72.0	133.8	0.0	
39	E	102.0	133.8	8.5	8.5	90.0	0.0	102.0	133.8	0.0	
40	E	132.0	133.8	8.5	8.5	90.0	0.0	132.0	133.8	0.0	

POWER DENSITY STATISTICS				
Name	# Luminaires	Total Watts	Area	Density
Power Density Zone # 1	1	53.20 W	21736.24 ft <sup>2</sup>	0.00 W/ft <sup>2</sup>

**NOTES**

1. Readings shown are in units of maintained footcandles.
2. Total light loss factor = See luminaire schedule
3. Test plane = 0' aff
4. Ceiling height = 10' aff
5. Fixture mounting height = 8.5' aff
6. Fixture spacing = See plan view
7. Reflectance = 10/10/10
8. This photometrics layout was calculated using specific criteria, any deviation from stated parameters will effect actual performance.
9. These lighting calculations are not a substitute for independent engineering analysis of lighting system suitability and safety.



**PARKING GARAGE**  
 TYPICAL VAP 232 WD  
 POINT ILLUMINATION STUDY

**Designer**  
 R.A. MCILRATH  
**Date**  
 Mar 17 2010  
**Scale**  
 AS NOTED  
**Drawing No.**  
 999-02210A2