

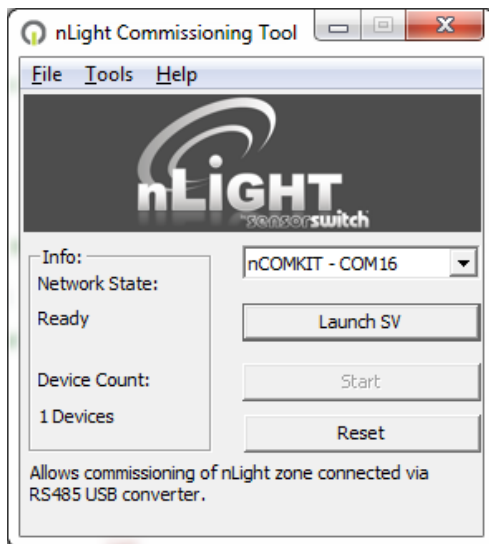
## Fresco nLight Processor and nLight Device Update

### Connect nCOMM Kit to Fresco

- Either use one of the unused nLight ports on Fresco, or connect in-line with the nLight network.

### Launch the nLight Commissioning Tool

- Start -> Programs -> nLight -> nLight Commissioning Tool
- Click the Start button, wait for devices to be discovered.



### Launch Sensor View

- On the nLight Commissioning Tool, click Launch SV or visit <http://localhost/SensorView> if the application is installed locally.
- Login to SensorView, the default username is **administrator** and password is **admin**.
- On the SensorView site, navigate to Admin -> Updates.
- nLight devices which have updates available will be shown.
- For updating a Fresco it too will be shown as a device.

### Complete the Update

- Once complete, using the nLight Commissioning Tool, click Reset (this will disconnect from the nLight network).
- Reboot the Fresco and verify the firmware version has been updated.